

# Lace Fence<sup>®</sup>

architectural fabric



Catalogue

*from fantasy to factory - architectural fabric - Dutch design delivered globally*

*Design by Studio* **DEMAKERSVAN**



# Lace Fence®

architectural fabric

Lace Fence is a Dutch based company that designs & produces customized architectural fabric.

The company is set up by Joep Verhoeven, member of the Dutch design house DEMAKERSVAN. His initial idea was to show how something, which was meant to be purely functional, can also be decorative. Hostility versus kindness, industry versus craft.



The idea to use the craft of lace making in an industrial product this way was embraced in the design world massively since its launch and got awarded several times since then.

Lace Fence has grown into a product, which lives up to the highest standards for a variety of applications. The architectural applications are limitless. Varying from (French) balconies, building facades, ceiling panels, bridge & staircase railings, room dividers, park & driveway fencing, brand marks, gates & doors. or even just as a hand-made art piece on the wall.



# Lace Fence®

architectural fabric





# Lace Fence<sup>®</sup>

architectural fabric

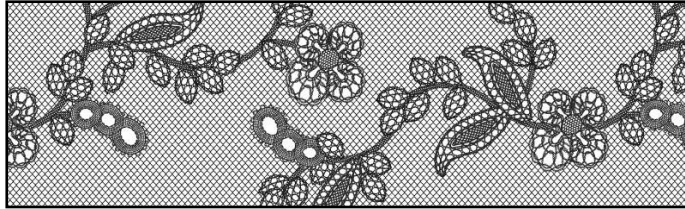
One of the key features of Lace Fence is its open character. Lace Fence can be made as open as its application demands. The design and density of the Lace patterns are flexible. Varying from 5x5 mm upto 500x500 mm. Lace Fence can be adapted to prevent climbing on, to hide or enhance or personalise its environment.



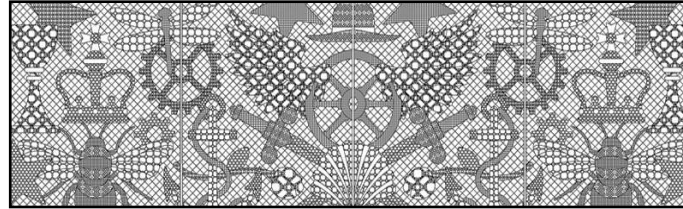


# Lace Fence<sup>®</sup>

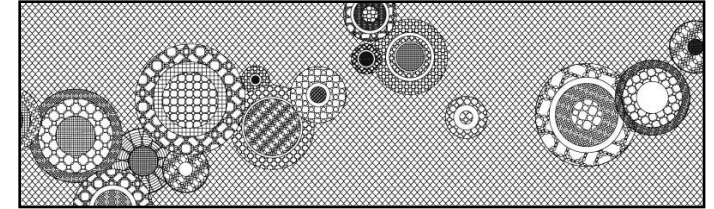
architectural fabric



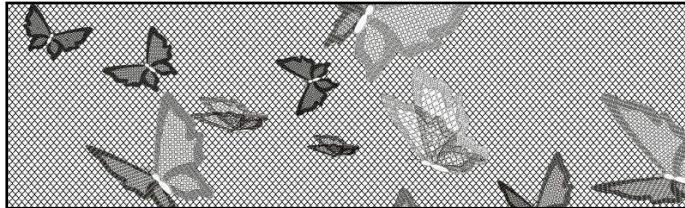
*Original*



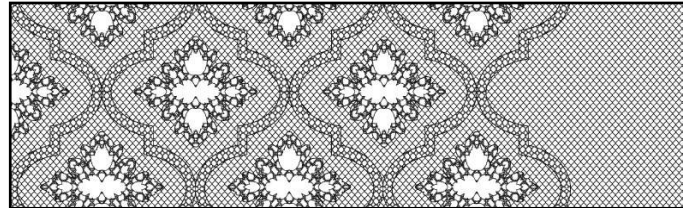
*Custom*



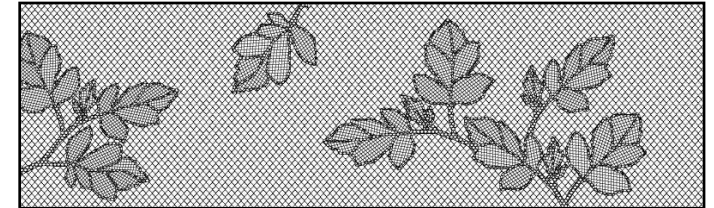
*Drops*



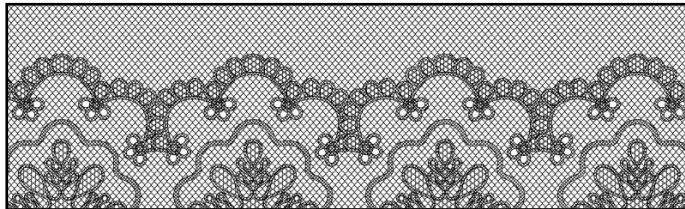
*Butterfly*



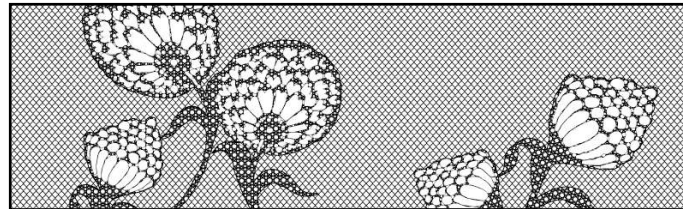
*Wallpaper*



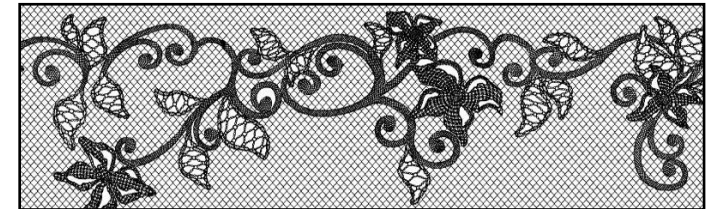
*Leaves*



*Borders*



*Blossom*



*Classic*

We work in close collaboration with each client to design a custom pattern or select a pattern from our Lace Fence pattern collection shown on the top side of this page.

When you submit your own pattern an inspirational image, photo or drawing is sufficient in the preliminary stage of the project. Each solution leads to an unique custom look.

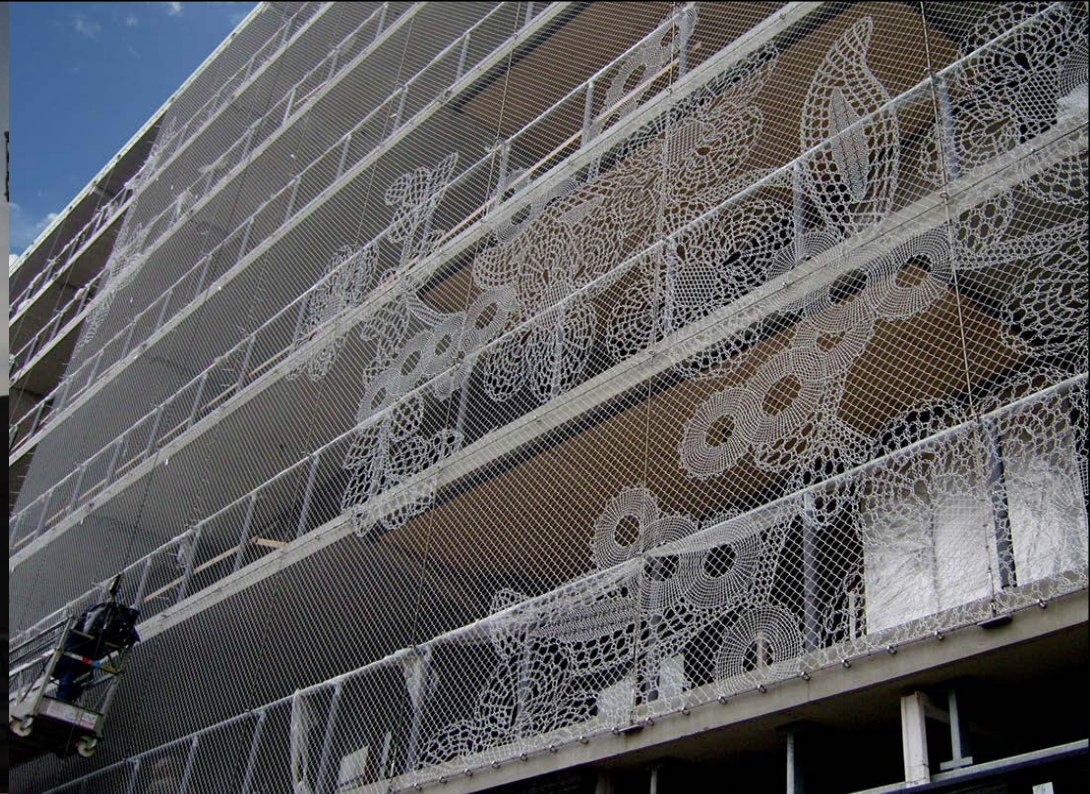
The custom patterns are to be converted into vector drawings with grey-tones (2 to 7 grey tones) showing the density of the Lace patterns. During the final stages the grey tone vector drawings are converted into Lace patterns. During the whole process we can assist. A design fee is calculated based on the complexity of the pattern design, workload and size of the order.

*Patterns*



# Lace Fence<sup>®</sup>

architectural fabric

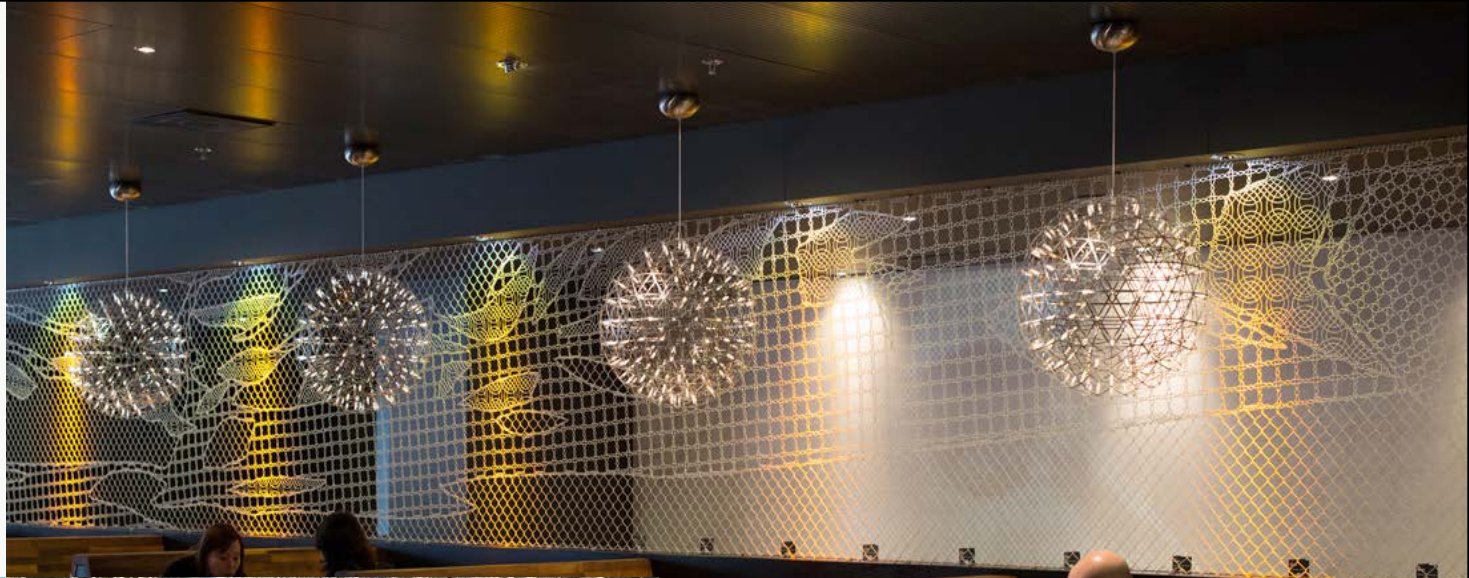




# Lace Fence<sup>®</sup>

architectural fabric

We work in close collaboration with each client from design to mounting Lace Fence on location. to ensure a successful completion of each project.



If required we can offer a full package including frames and mounting depending on its location.

Contact our sales department for more info.



Lace Fence<sup>®</sup>  
architectural fabric





# Lace Fence<sup>®</sup>

architectural fabric



*Type 1. Bended*

Product Types: Lace Fence comes in two types, the Bended Lace Fence and the Welded Lace Fence.

- 1) The **Bended** Lace Fence is made of chain-link fence and Lace patterns. The materials are Galvanised, Stainless Steel, Copper, Brass wire. Optional plastic coated.
- 2) The **Welded** Lace Fence is made of welded mesh panels and Lace patterns. The material is hot dipped galvanized. Optional powder coated in any standard RAL color. The surface of the Welded type is more rigid than the Bended type, it requires less supporting frames. For example very suitable for balconies and railings.



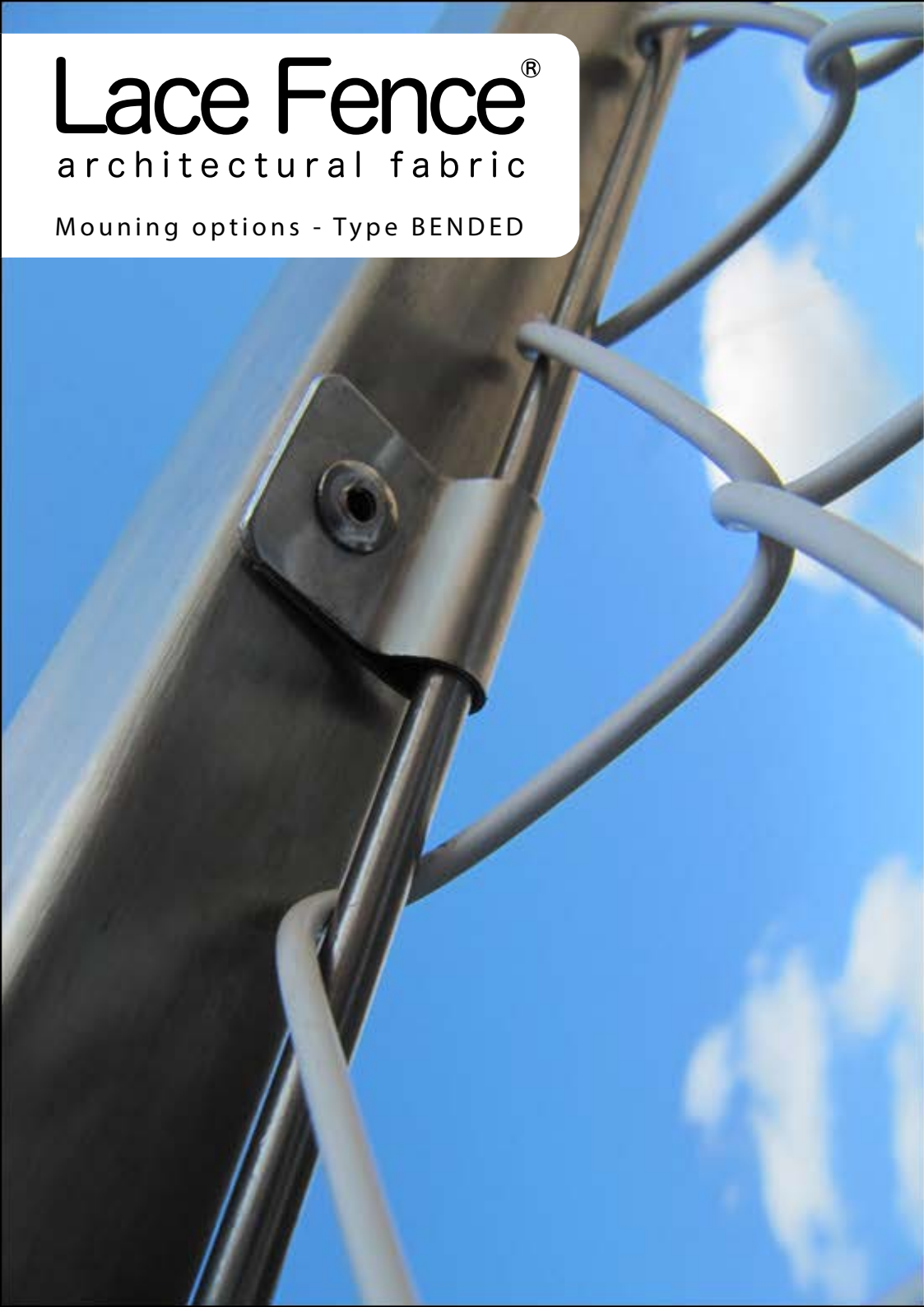
*Type 2. Welded*



# Lace Fence<sup>®</sup>

architectural fabric

Mouning options - Type BENDED



## Option 1 - Ring

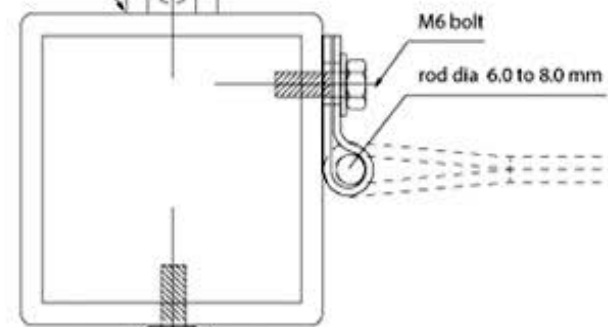
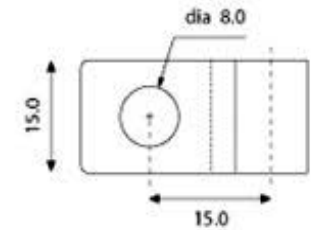
3D-view



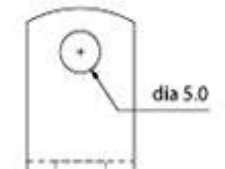
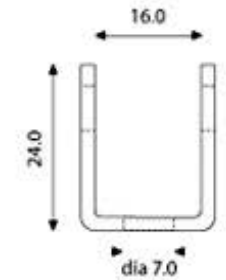
6 mm ring / rod  
welded to frame

## Option 2 - Clip

3D-view



M3 bolt/pin



3D-view

## Option 3 - Jaw lock

Mounting



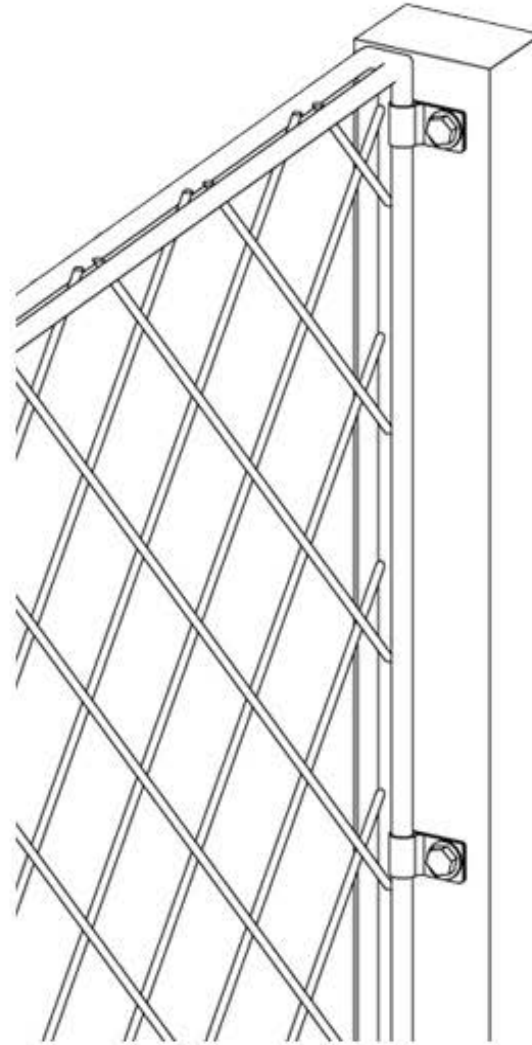
# Lace Fence<sup>®</sup>

architectural fabric

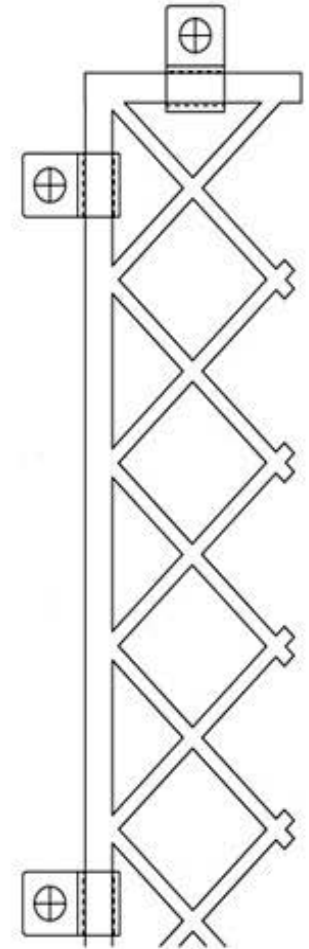
Mouning options - Type WELDED



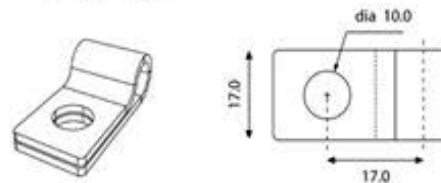
Option 1 - Double rod + clip  
(horizontal no frame required)



Option 2 - Single rod + clip



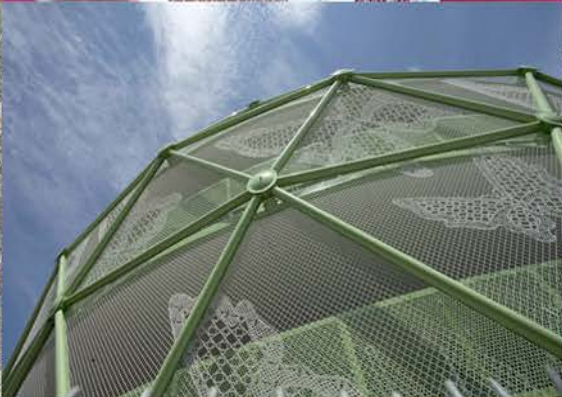
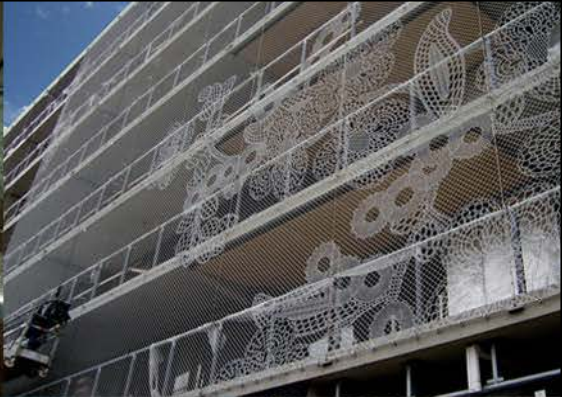
clip (large)



Option 3 - Single rod + weld

*Mounting*







# Lace Fence<sup>®</sup>

architectural fabric

Lace Fence is delivered globally.  
For further inquiries select your  
country or region to contact us  
by Email [info@lacefence.com](mailto:info@lacefence.com) or  
check our website for the sales  
representative in your area.  
[www.lacefence.com](http://www.lacefence.com)

T +31 (0)208450626  
M [info@lacefence.com](mailto:info@lacefence.com)

Visiting Address:  
Van Diemenstraat 410–412,  
1013 CR Amsterdam, The Netherlands  
Studio / bel 024

Workshop:  
Marconistraat 52, 3029 AK  
Rotterdam, The Netherlands

Shipping & Storage:  
Radiostraat 1, 3019 AP  
Rotterdam, The Netherlands



*Sales*