

Box  
roller  
blind



EXTERIOR

box



INTERIOR

## Sustainable building

**Ecological**, contributing to preserving the environment by reducing pollution and waste.

**Efficient**, saving energy by minimising the use of non-renewables.

**Comfortable**, improving the quality of the environment by creating more comfortable, healthier and safer spaces.

### Energy efficiency

Solar protection systems contribute in the use of solar energy by reducing energy consumption and CO2 emissions

### Visual and temperature Comfort

The blinds allow light to enter effectively, increasing the well-being of the dwelling and improving output in the workplace.

They also control the interior temperature and ventilation, providing the ideal conditions for the activity carried out.

**box**

Exterior blind  
+ Polyscreen® fabric  

---

= sustainable binomial



A Box roller blind in Polyscreen® fabric installed outside the building saves up to 55% in air-conditioning.



Temperature control in buildings is estimated to account for 48% of a country energy expenditure.

The installation of solar protection systems, either inside or out, is an optimal solution for improving a dwelling or a public buildings efficiency by making better use of the solar energy and reducing the need for lighting, heating and cooling.

The multiple **Window + Solar Protection** project options give solutions that combine appearance and functionality.

Roller blinds that protect the inside and outside of the window to give comfortable heating and lighting, thus improving the work conditions.

BOX



CONTRACT  
Sustainable engineering

Bandalux **designs solutions** according to current international regulations and standards.

All products are subject to **rigorous testing** in approved laboratories to guarantee maximum **quality, safety and sustainability.**



box



## HOME Ecological decoration

Choosing Bandalux to decorate the home means enjoying the high levels of quality in technical building.

A home decorated with Bandalux, therefore, has an aesthetic and comfortable solar protection system that saves energy.

box



## Resistance to adverse weather conditions

The roller blind is hidden in the box to protect the mechanisms and the fabric from adverse weather conditions.

## High-quality, rustproof materials

Qualicoat lacquered finishes; the product meets the necessary requirements for exposure to the weather and optimal durability.



box



## Decorative and functional

The boxes have been designed in shapes that blend into the building and the window profile (d-box and s-box), or give character with a new design (o-box).



# BOX



o-box  
95mm

o-box  
130mm



## o-box roller blind



White  
RAL 9010



Matte Black  
RAL 9011



Metal  
Grey



Acier Grata  
(repolished anodised  
polished aluminium)

\* Special lacquers available upon request.

# o-box



## Smart design

Newly developed ceiling and wall support fixtures overcoming small differences in installation and measurement.



Ceiling



Wall

## Easier and faster installation

Once the support has been installed, the box can be moved to the side to allow precise and rapid installation.



## extreme fastening

Separation and fixing support for rod guide.



# o-box

# Operating systems

The new o-box roller blind is available with three operation systems that allow it to better meet customer needs.

■ motor

■ crank

■ chain\*

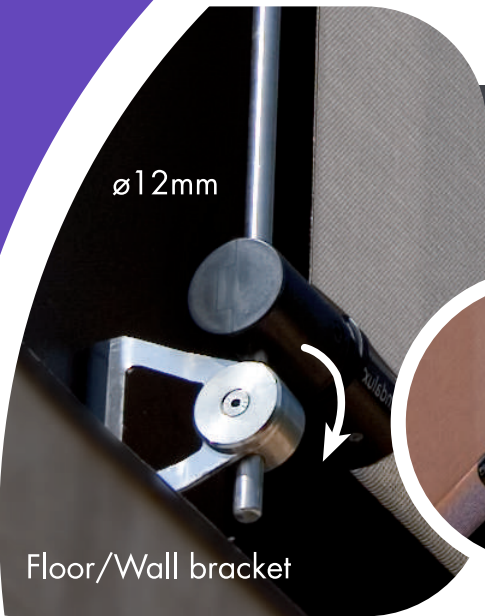


\* Chain only available for o-box 95mm.

# o-box

## Guiding systems

The guides have been designed to hold the fabric better and to allow installations up to 4 metres high.  
( $\varnothing 12\text{mm}$  model)



### Rod guide

Stainless  
 $\varnothing 10/12\text{mm}$



### Aluminium 'U' guide

Low profile 'U' guide and Reinforced 'U' guide, for self-supporting fastening.



### Cable guide

Stainless  
 $\varnothing 3,5\text{mm}$ .





# Exclusive finishes

Covers designed and developed for each kind of available guide option.

Guideless



Cable guide rod



Cable guide



Self-supporting reinforced guide



Rod guide





# o-box



d-box  
55mm

d-box  
65mm

d-box  
85mm

d-box  
110mm

## d-box roller blind



White  
RAL 9010



Matte Black  
RAL 9011



Ivory  
RAL 1015



Brown  
RAL 8019



Grey  
RAL 9006



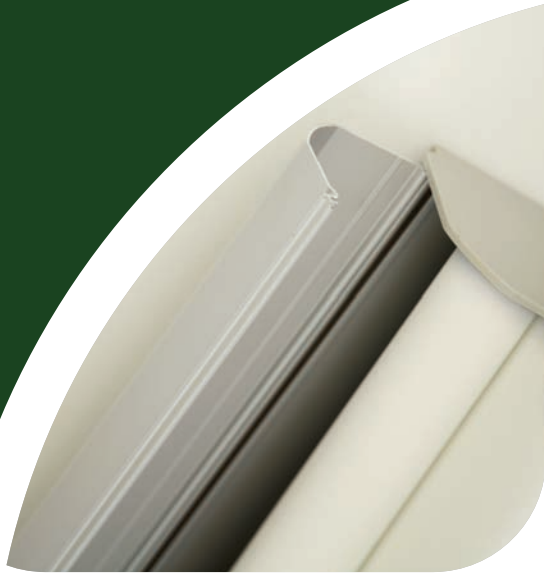
Anthracite  
RAL 7016



Garnet  
RAL 3004

# d-box





## The box that adapts better

Four box sizes available to choose the one that best fits the window.

# d-box



s-box  
75mm

s-box  
100mm

s-box  
130mm

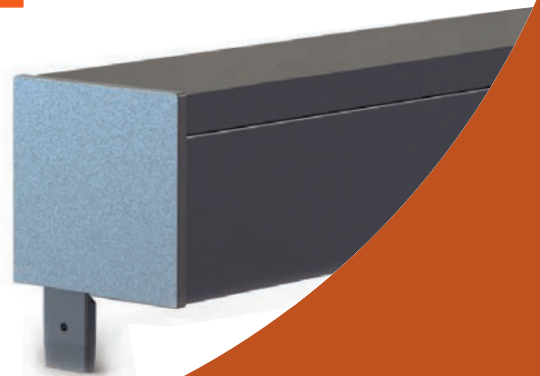
## s-box roller blind



White  
RAL 9010



Grey  
RAL 9006



# s-box



## The box that **integrates better**

The shape of the box allows it to integrate in the window space as a further component of the aluminium frame.

# s-box



z-box  
100mm

z-box  
130mm

## z-box roller blind



White  
RAL 9010



Matte Black  
RAL 9011



Metal  
Grey



Acier Grata  
(repolished anodised  
polished aluminium)



Grey  
RAL 9006

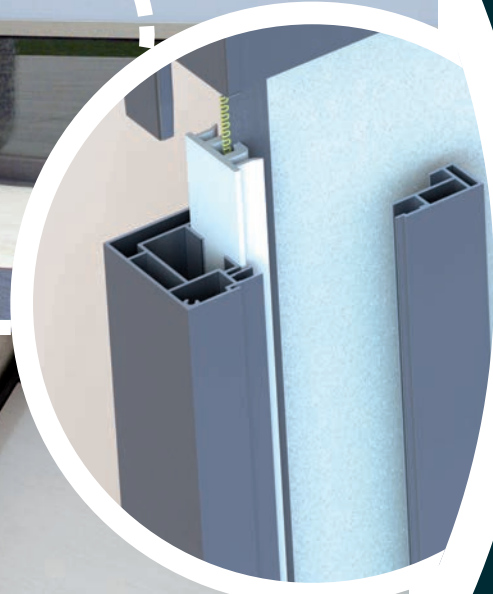


Roller blind with zip-type guide allowing the fabric to be tensed and preventing folds and wrinkles. The fabric is held inside the site guide, resisting winds of up to 90km/h.

Up to 22m<sup>2</sup> can be covered.  
Total opacity using a darkening fabric.



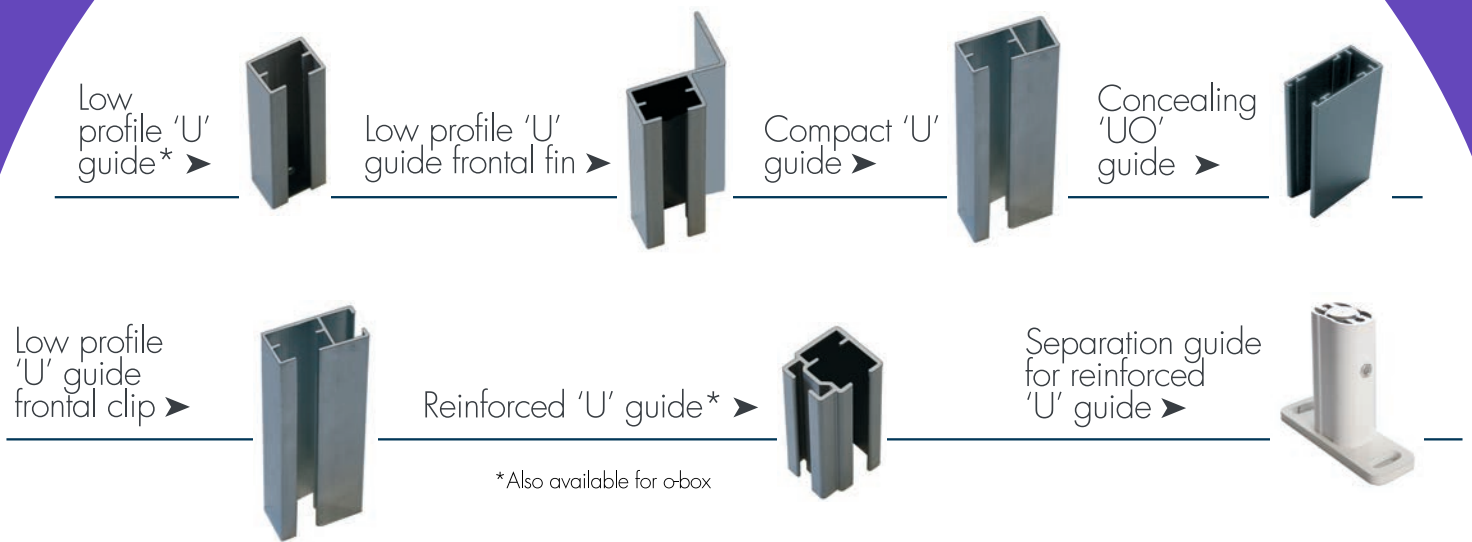
Concealing  
'Zip' guide



# Z-BOX

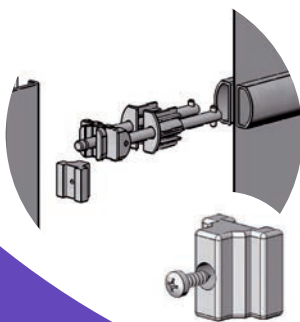
# Aluminium guides d-box | s-box

Bandalux aluminium guides allow the blind to be integrated in the frame and cover the window to assure interior darkness.



## Safety and strenght

Maximum safety and strength in installing the blind on the outside



Designed to avoid the sail effect, sharp movements and tearing that the wind can cause.

intermediate profiles

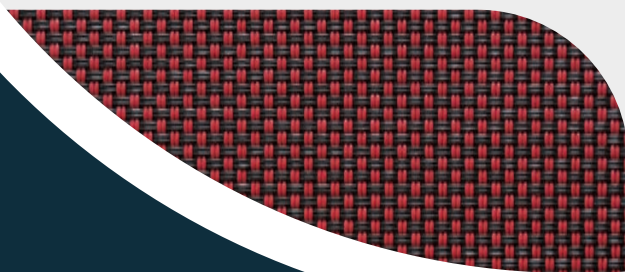
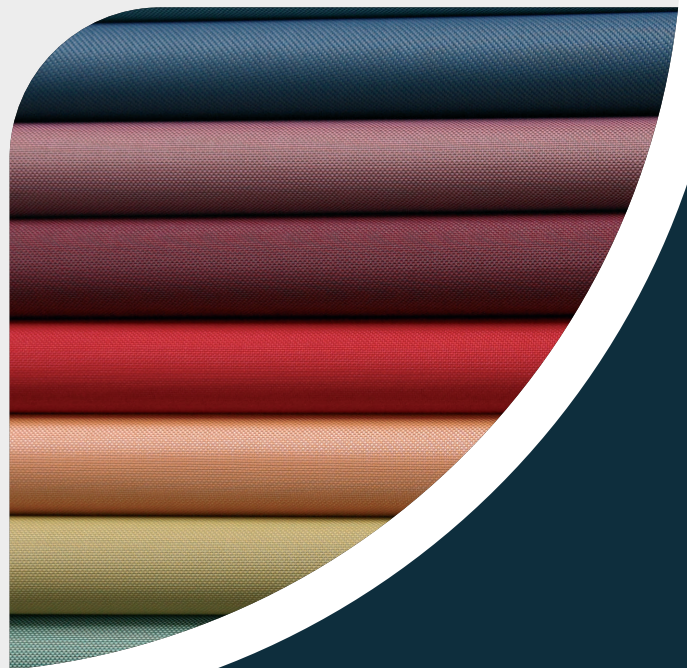


## Interior and exterior

Technical-decorative fabric, resistant to adverse weather conditions and with a wide range of colours.

Technical fabric with a smart appearance

Using the Polyscreen® fabric and its different degrees of opening, energy can be saved while protecting the work atmospheres.







## Darkness and comfort

The darkening technical fabric of the Black Out, Imagine Black Out, Noche, Opac and Polyscreen® 550 Black Out collections installed along with concealing guides are the ideal solution for blind-less windows that require total darkness.



# other fabrics

# International Certifications



**3**  
YEARS WARRANTY



Blind systems



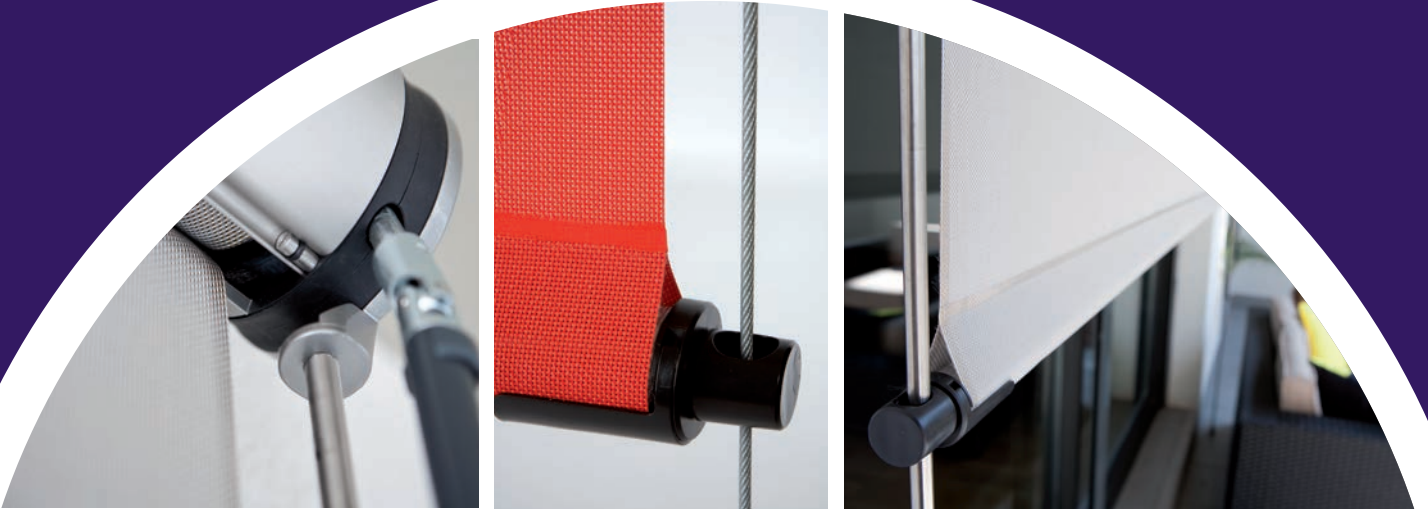
Concerning to the fire retardant  
UNE EN 13773 · EN 13773  
NF P 92-503 · DIN 4102  
BS 5867:2.80 · NFPA 701

**5**  
YEARS WARRANTY  
FABRICS

Fabrics



# certifications



d



s



o



z



SPAIN

FRANCE

ITALY

PORTUGAL

BELGIUM

NETHERLANDS

USA

