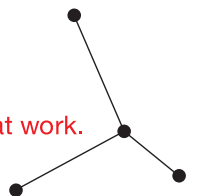


Konvertierungskabel M-Serie und Mr. Slim

Maintenance Tool



Mitsubishi Electric LES
bedeutet geballtes Fachwissen
für gemeinsamen Erfolg:

Zuhören und verstehen.

Intelligente Produkte entwickeln.

Kompetent beraten. Trends

erkennen. Zukunft gestalten.

Aus Wissen Lösungen machen.

Knowledge at work.



Inhalt

| | | |
|-----------|---------------------------------------|-----------|
| 1. | Installation | 4 |
| 1.1 | Erstinstallation des Maintenance Tool | 4 |
| 2. | Starten des Online-Monitors | 7 |
| 2.2 | Verbindung | 7 |
| 3. | MNT-Kabel | 10 |

1. Installation



Hinweise!

- **Version 5.** ist die aktuelle Version.**

1.1 Erstinstallation des Maintenance Tool

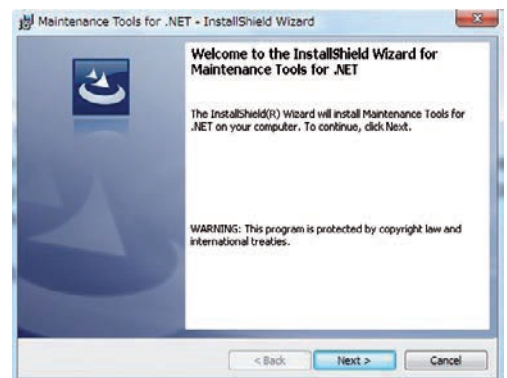


Hinweise!

- **Melden Sie sich vor dem Einrichten mit dem als Administrator autorisierten Anmeldenamen an.**
- **Bestätigen Sie vor dem Einrichten die folgenden Punkte.**
 - **Die Option „Laufwerk komprimieren, um Speicherplatz zu sparen“ von LocalDisk (C :) muss entfernt werden.**

Wenn dies nicht der Fall ist, tritt ein Fehler bei der Installation auf und die Installation wird abgebrochen.

Doppelklicken Sie auf die Datei „SETUP.exe“. (Öffnen Sie niemals eine andere Datei.) Der Installations-Bildschirm erscheint. Klicken Sie auf den Button [Install] (Installieren) und die Installation wird gestartet.

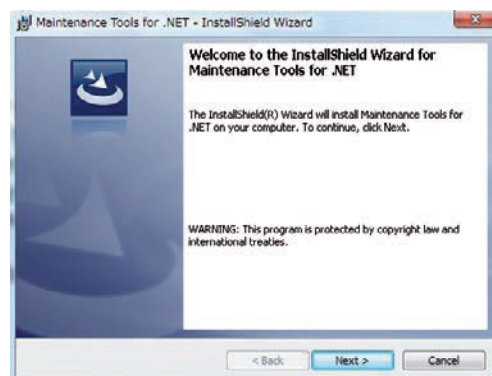


Hinweise!

- **Die Anzahl der angezeigten Anwendungen in der Liste im Installations-Bildschirm kann unterschiedlich ausfallen und ist nicht von Bedeutung, klicken Sie einfach auf den Button [Install] (Installieren).**
- **Die Installation dauert nur etwa 1 Minute.**
- **Wenn die Meldung „.NETFramework 3.5SP1 is not installed.“ (.NETFramework 3.5SP1 ist nicht installiert.) erscheint, laden Sie diese Version von der Microsoft-Homepage an entsprechender Stelle herunter.**

- (1) Installation des Maintenance Tools: Wenn die Installation der Anwendungssoftware abgeschlossen ist, wird der Installationsbildschirm des Maintenance Tools angezeigt. Klicken Sie auf die Schaltfläche **[Next]**, wenn kein Problem gefunden wurde.

* Um die Installation abubrechen, klicken Sie auf die Schaltfläche **[Cancel]**.

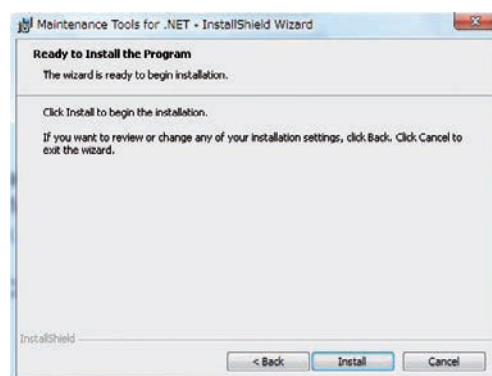


- (2) Bereit zum Installationsstart

Bestätigen Sie den Start und wählen Sie die Schaltfläche **[Install]**.

Klicken Sie auf die Schaltfläche **[Install]**, um die Installation zu starten.

* Um die Installation abubrechen, klicken Sie auf die Schaltfläche **[Cancel]**.

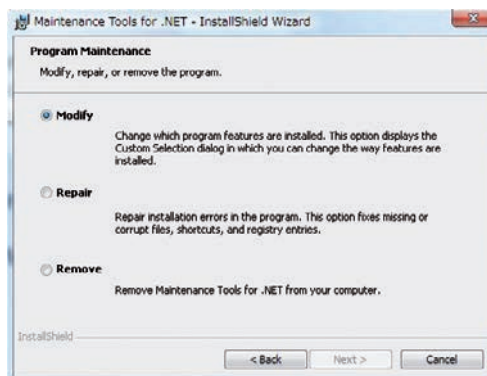


Bitte beachten Sie:

Wenn das nebenstehende Fenster erscheint, hat InstallShield bereits installierte Programmteile oder -fragmente gefunden, die zuerst entfernt werden müssen. Wählen Sie die Option **[Remove]** und klicken Sie auf **[Next]**.

Klicken Sie im nächsten Fenster auf **[Remove]** und zum Abschluss auf **[Finish]**. Bereits installierte Dateien werden dann entfernt.

Starten Sie „Setup.exe“ nochmal, um die Software erneut zu installieren.

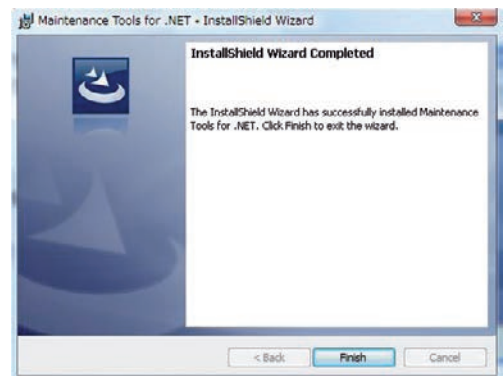


- (3) Bestätigen des Abschlusses der Einrichtung des Maintenance Tools

1) Klicken Sie auf die Schaltfläche **[Finish]**.

Klicken Sie im Bildschirm Installation abgeschlossen auf die Schaltfläche **[Finish]**.

Damit ist die Installation des Maintenance Tools abgeschlossen.



Hinweis!

Stellen Sie sicher, dass der Computer neu gestartet wird, bevor mit der Software gearbeitet wird.

- (5) Weitere Software einrichten (nur mit USB-zu-Seriell-Konverter)

Beim Anschluss an die Baureihe M-Serie oder Mr. Slim per USB-zu-Seriell-Konverter müssen Sie zusätzlich die folgende Software installieren.

1) Software für USB-zu-Seriell-Konverter installieren

Installieren Sie die Software (FT_PROG) von dieser FTDI-Website.
<http://www.ftdichip.com/Support/Utilities.htm>



Hinweis!

Für den Betrieb von FT_PROG ist Microsoft .NET Framework in der Version 4.0 oder höher erforderlich.

2) Microsoft Visual C++ Redistributable für Visual Studio 2015 installieren

Installieren Sie Microsoft Visual C++ Redistributable für Visual Studio 2015 von dieser Microsoft-Website:
<https://www.microsoft.com/en-US/download/details.aspx?id=48145>



Hinweis!

Sie müssen auch bei einem 64bit Betriebssystem die 32bit-Software (vc_redist.x86.exe) installieren.

3) USB-Treiber installieren

Weitere Informationen zur Installationsmethode finden Sie im Handbuch zum Maintenance Tool.

2. Starten des Online-Monitors (Verbindung per USB-zu-Seriell-Konverter)

2.2 Verbindung

In diesem Fall wird die Online-Überwachung an die Klimaanlage angepasst, indem der USB-zu-Seriell-Konverter lokal verbunden werden.

Nachdem Sie die Spannungsversorgung der Klimaanlage deaktiviert haben (Schutzschalter), schließen Sie den USB-zu-Seriell-Konverter an die Klimaanlage an.



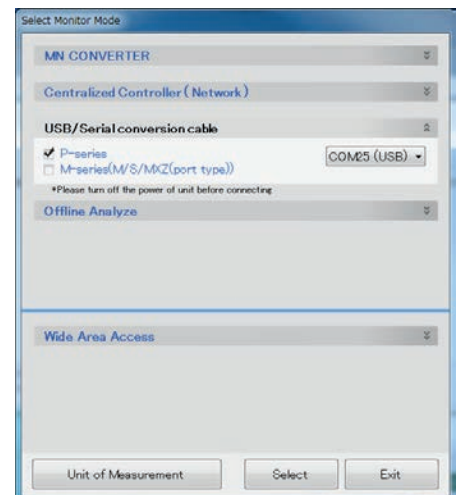
Achtung!

- Es besteht die Gefahr eines Spannungsschlags. Schließen Sie den USB-zu-Seriell-Konverter daher erst an und trennen Sie die Verbindung mit dem USB-zu-Seriell-Konverter erst, nachdem Sie die Spannungsversorgung der Klimaanlage deaktiviert haben (Schutzschalter).
- Setzen Sie die Schalttafel (Heißschrumpfschlauch) des USB-zu-Seriell-Konverters aus Sicherheitsgründen in das Außengerät ein und schließen Sie die Abdeckung des Außengeräts, bevor Sie die Stromversorgung aktivieren.
- Setzen Sie den USB-zu-Seriell-Konverter nicht Feuchtigkeit aus. Er darf nicht nass werden.
- Ziehen oder biegen Sie den USB-zu-Seriell-Konverter nicht.

(1) Wenn Sie auf dem Auswahlbildschirm des Monitor-Modus auf „USB-zu-Seriell-Konverter“ klicken, werden gleichzeitig „Baureihe Mr. Slim“ und „Baureihe M-Serie“ ausgewählt.

Wählen Sie die COM-Port-Nummer des angeschlossenen USBs aus. Klicken Sie zuletzt auf **[SELECT]**.

* Wenn Sie den USB-zu-Seriell-Konverter vorab mit dem USB-Port verbinden, wird die USB COM-Port-Nummer angezeigt.

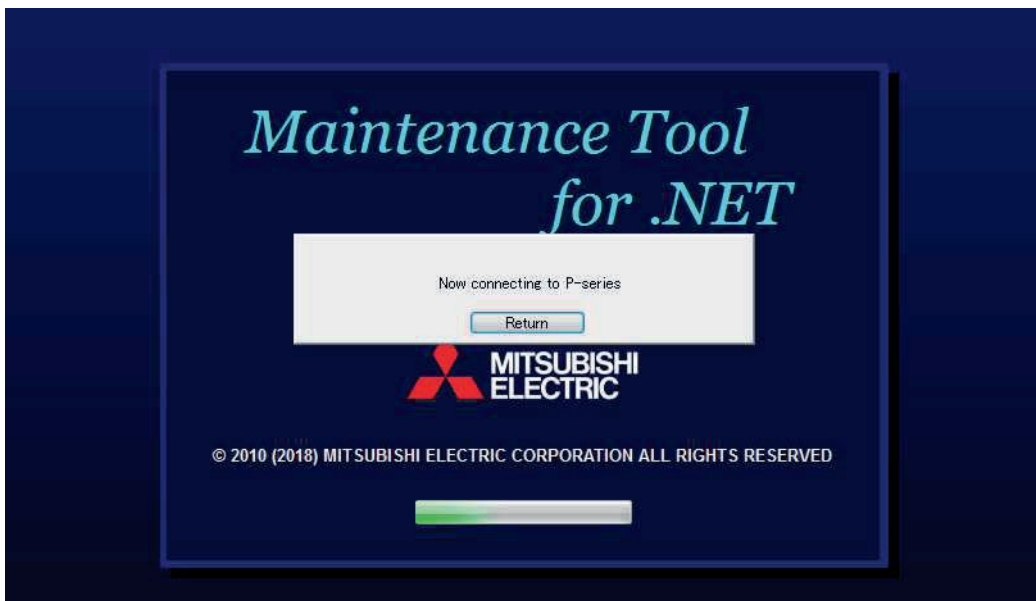


(2) Bei Auswahl von Mr. Slim

Stellen Sie sicher, dass Sie die Klimaanlage einschalten, nachdem Sie die folgende Meldung erhalten haben. Wenn die Klimaanlage eingeschaltet bleibt, schalten Sie bitte das System aus und wieder ein.



Nach dem Klicken von [OK] wechselt der Monitor zum Bildschirm Connection.



Nachdem die Informationen der Klimaanlage gesammelt wurden, wechselt das System automatisch zum Bildschirm Betriebsüberwachung.

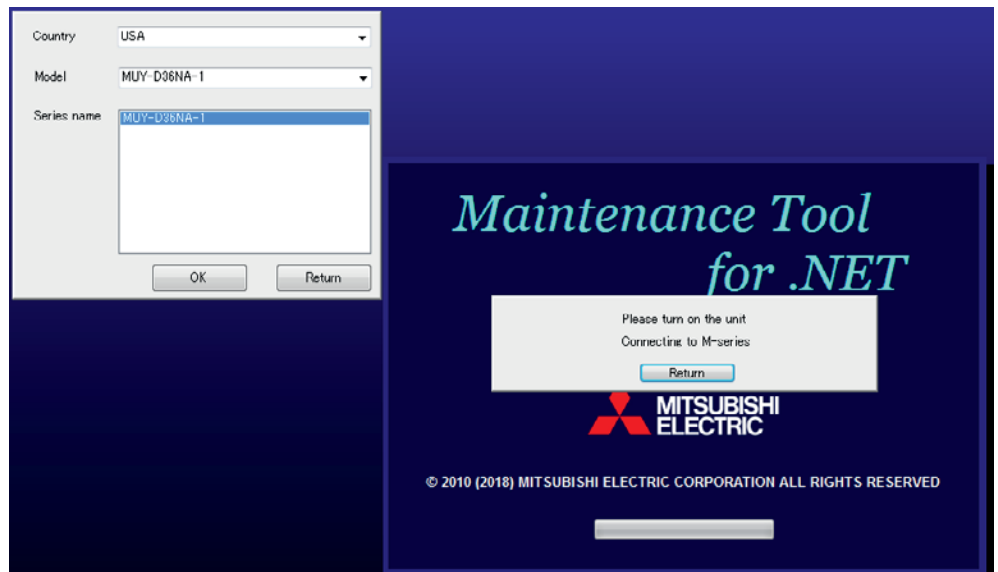


Hinweise!

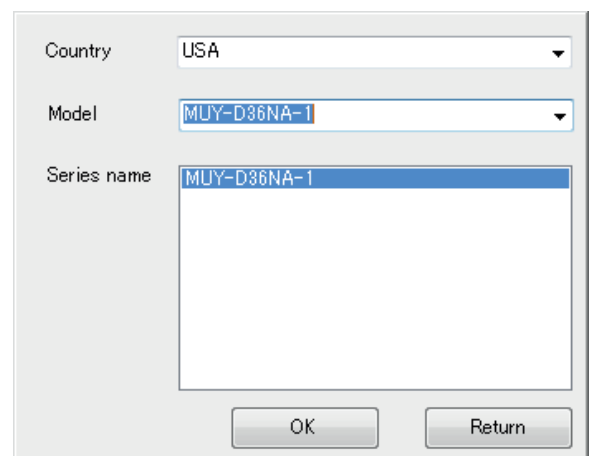
- Wenn Sie das Maintenance Tool mit der Klimaanlage verbinden, während die Klimaanlage läuft, treten Kommunikationsfehler auf und die Klimaanlage stoppt. In diesem Fall schalten Sie bitte die Stromversorgung der Klimaanlage aus und wieder ein und schließen Sie das Maintenance Tool wieder an.
- Nachdem Sie die Baureihe ausgewählt haben, können Sie zum Menü „Operation Monitor“ (Betrieb überwachen) zurückkehren, indem Sie auf „Return“ (Zurück) klicken.
- Der VENTILATOR des Außengeräts dreht sich automatisch nach dem Start der Klimaanlage. Das ist normal. Diesen Modus können Sie beenden, indem Sie das Gerät mit einer Fernbedienung regeln.

(3) Bei Auswahl von M-Serie

Aktivieren Sie bitte die Stromversorgung der Klimaanlage (Schutzschalter), nachdem der folgende Titelbildschirm angezeigt wird.



Wählen Sie das Land und das Modell oder die Baureihe des anzuschließenden Außengeräts aus und klicken Sie dann auf „OK“. Nun können Sie das Modell in der Drop-down-Liste eingrenzen, indem Sie den Modellnamen in das Eingabefeld „Model“ (Modell) eingeben. Nachdem die Daten des Geräts abgerufen wurden, erscheint automatisch das Menü „Operation Monitor“ (Betrieb überwachen).

**Hinweis!**

Nachdem Sie die Baureihe ausgewählt haben, können Sie zum Menü „Operation Monitor“ (Betrieb überwachen) zurückkehren, indem Sie auf „Return“ (Zurück) klicken.

3. MNT-Kabel

| Jahr | Gerätefamilie | Geräteserie | Gerätmodell | Relaiskabel | Anschluss | Anschlussmöglichkeit |
|--------------------------------|---------------|---------------------------|--|-------------|-----------|----------------------|
| Mr. Slim – Single-Split | | | | | | |
| 2005 | Mr. Slim | SUZ-KA25VA.TH | SUZ-KA25VA.TH | Type AD | CN606 | Single-Split |
| 2005 | Mr. Slim | SUZ-KA25VAH.TH | SUZ-KA25VAH.TH | Type AD | CN606 | Single-Split |
| 2005 | Mr. Slim | SUZ-KA35VA.TH | SUZ-KA35VA.TH | Type AD | CN606 | Single-Split |
| 2005 | Mr. Slim | SUZ-KA35VAH.TH | SUZ-KA35VAH.TH | Type AD | CN606 | Single-Split |
| 2005 | Mr. Slim | SUZ-KA50VA.TH | SUZ-KA50VA.TH | Type AD | CN605 | Single-Split |
| 2005 | Mr. Slim | SUZ-KA60VA.TH | SUZ-KA60VA.TH | Type AD | CN605 | Single-Split |
| 2005 | Mr. Slim | SUZ-KA71VA.TH | SUZ-KA71VA.TH | Type AD | CN605 | Single-Split |
| 2007 | Mr. Slim | SUZ-KA50VA#1.TH | SUZ-KA50VA#1.TH | Type AD | CN605 | Single-Split |
| 2007 | Mr. Slim | SUZ-KA60VA#1.TH | SUZ-KA60VA#1.TH | Type AD | CN605 | Single-Split |
| 2007 | Mr. Slim | SUZ-KA71VA#1.TH | SUZ-KA71VA#1.TH | Type AD | CN605 | Single-Split |
| 2008 | Mr. Slim | SUZ-KA25VAHR1.TH | SUZ-KA25VAHR1.TH | Type B | CN606 | Single-Split |
| 2008 | Mr. Slim | SUZ-KA25VAR1.TH | SUZ-KA25VAR1.TH | Type B | CN606 | Single-Split |
| 2008 | Mr. Slim | SUZ-KA35VAHR1.TH | SUZ-KA35VAHR1.TH | Type B | CN606 | Single-Split |
| 2008 | Mr. Slim | SUZ-KA35VAR1.TH | SUZ-KA35VAR1.TH | Type B | CN606 | Single-Split |
| 2008 | Mr. Slim | SUZ-KA50VAR2.TH | SUZ-KA50VAR2.TH | Type B | CN606 | Single-Split |
| 2008 | Mr. Slim | SUZ-KA60VAR2.TH | SUZ-KA60VAR2.TH | Type AD | CN605 | Single-Split |
| 2010 | Mr. Slim | SUZ-KA25VA2.TH | SUZ-KA25VA2.TH | Type B | CN606 | Single-Split |
| 2010 | Mr. Slim | SUZ-KA35VA2.TH | SUZ-KA35VA2.TH | Type B | CN606 | Single-Split |
| 2010 | Mr. Slim | SUZ-KA50VA2.TH | SUZ-KA50VA2.TH | Type B | CN606 | Single-Split |
| 2010 | Mr. Slim | SUZ-KA60VA2.TH | SUZ-KA60VA2.TH | Type AD | CN605 | Single-Split |
| 2010 | Mr. Slim | SUZ-KA71VA2.TH | SUZ-KA71VA2.TH | Type C | CN806 | Single-Split |
| 2012 | Mr. Slim | SUZ-KA25VA3.TH | SUZ-KA25VA3.TH | Type C | CN606 | Single-Split |
| 2012 | Mr. Slim | SUZ-KA35VA3.TH | SUZ-KA35VA3.TH | Type C | CN606 | Single-Split |
| 2012 | Mr. Slim | SUZ-KA50VA3.TH | SUZ-KA50VA3.TH | Type C | CN606 | Single-Split |
| 2012 | Mr. Slim | SUZ-KA60VA3.TH | SUZ-KA60VA3.TH | Type C | CN806 | Single-Split |
| 2012 | Mr. Slim | SUZ-KA71VA3.TH | SUZ-KA71VA3.TH | Type C | CN806 | Single-Split |
| 2013 | Mr. Slim | SUHZ-SW45VA.TH | SUHZ-SW45VA.TH | Type C | CN606 | Single-Split |
| 2013 | Mr. Slim | SUHZ-SW45VAH.TH | SUHZ-SW45VAH.TH | Type C | CN606 | Single-Split |
| 2013 | Mr. Slim | SUZ-KA25VA4.TH | SUZ-KA25VA4.TH | Type C | CN606 | Single-Split |
| 2013 | Mr. Slim | SUZ-KA25VA4.TH-ER | SUZ-KA25VA4.TH-ER | Type C | CN606 | Single-Split |
| 2013 | Mr. Slim | SUZ-KA35VA4.TH | SUZ-KA35VA4.TH | Type C | CN606 | Single-Split |
| 2013 | Mr. Slim | SUZ-KA35VA4.TH-ER | SUZ-KA35VA4.TH-ER | Type C | CN606 | Single-Split |
| 2013 | Mr. Slim | SUZ-KA50VA4.TH | SUZ-KA50VA4.TH | Type C | CN606 | Single-Split |
| 2013 | Mr. Slim | SUZ-KA50VA4.TH-ER | SUZ-KA50VA4.TH-ER | Type C | CN606 | Single-Split |
| 2013 | Mr. Slim | SUZ-KA60VA4.TH | SUZ-KA60VA4.TH | Type C | CN806 | Single-Split |
| 2013 | Mr. Slim | SUZ-KA60VA4.TH-ER | SUZ-KA60VA4.TH-ER | Type C | CN806 | Single-Split |
| 2013 | Mr. Slim | SUZ-KA71VA4.TH | SUZ-KA71VA4.TH | Type C | CN806 | Single-Split |
| 2013 | Mr. Slim | SUZ-KA71VA4.TH-ER | SUZ-KA71VA4.TH-ER | Type C | CN806 | Single-Split |
| M-Serie – Single-Split | | | | | | |
| 2005 | M-Serie | MUZ-FA GA KA small RAC(1) | MUZ-FA GA25/35VA(H) GB/HA/GC35VA(H) SUZ25 | Type AD | CN606 | Single-Split |
| 2005 | M-Serie | MUZ-FA GA KA small RAC(2) | MUZ-FA GA25/35VA(H) SUZ25 | Type AD | CN606 | Single-Split |
| 2005 | M-Serie | MUZ-FA GA KA small RAC(3) | MUZ-FA GA25/35VA(H) SUZ25 | Type AD | CN606 | Single-Split |
| 2005 | M-Serie | MUZ-FD25/35VABH | MUZ-FD25/35VABH-E1 | Type B | CN606 | Single-Split |
| 2005 | M-Serie | MUZ-GA GB big RAC-A(1) | "MUZ-GA50VA-E1/GA60VA-E1,E2/GA71VA-E1,E2/GB50VA-E1,E2" | Type AD | CN605 | Single-Split |
| 2005 | M-Serie | MUZ-GA GB big RAC-A(2) | MUZ-GA50VA-E1/GA60VA-E1,E2/GA71VA-E1,E2/GB50VA-E1,E2 | Type AD | CN605 | Single-Split |
| 2005 | M-Serie | MUZ-GA GB big RAC-A(3) | MUZ-GA50VA-E1/GA60VA-E1,E2/GA71VA-E1,E2/GB50VA-E1,E2 | Type AD | CN605 | Single-Split |

| Jahr | Gerätefamilie | Geräteserie | Gerätemodell | Relaiskabel | Anschluss | Anschlussmöglichkeit |
|------|---------------|----------------------|---|-------------|-----------|----------------------|
| 2005 | M-Serie | MUZ-GA60VA big RAC-B | MUZ-GA60VA-E3 | Type AD | CN605 | Single-Split |
| 2005 | M-Serie | MUZ-GB50/FB35/GE | MUZ-GB50VA/FB35VAH/ GE25/35/42/50VA(H) | Type B | CN606 | Single-Split |
| 2007 | M-Serie | MUZ-GA71VA-E2 | MUZ-GA71VA-E2 | Type AD | CN605 | Single-Split |
| 2007 | M-Serie | MUZ-GC25VA-E1 | MUZ-GC25VA-E1 | Type B | CN606 | Single-Split |
| 2007 | M-Serie | MUZ-GC35VA-E1 | MUZ-GC35VA-E1 | Type AD | CN606 | Single-Split |
| 2007 | M-Serie | MUZ-HC25VA-E1 | MUZ-HC25VA-E1 | Type B | CN606 | Single-Split |
| 2008 | M-Serie | MUZ-FD25VABH-E1 | MUZ-FD25VABH-E1 | Type B | CN606 | Single-Split |
| 2008 | M-Serie | MUZ-FD25VA-E1 | MUZ-FD25VA-E1 | Type B | CN606 | Single-Split |
| 2008 | M-Serie | MUZ-FD25VAH-E1 | MUZ-FD25VAH-E1 | Type B | CN606 | Single-Split |
| 2008 | M-Serie | MUZ-FD35VABH-E1 | MUZ-FD35VABH-E1 | Type B | CN606 | Single-Split |
| 2008 | M-Serie | MUZ-FD35VA-E1 | MUZ-FD35VA-E1 | Type B | CN606 | Single-Split |
| 2008 | M-Serie | MUZ-FD35VAH-E1 | MUZ-FD35VAH-E1 | Type B | CN606 | Single-Split |
| 2008 | M-Serie | MUZ-FD50VABH-E1 | MUZ-FD50VABH-E1 | Type AD | CN605 | Single-Split |
| 2008 | M-Serie | MUZ-GA60VA-E3 | MUZ-GA60VA-E3 | Type AD | CN605 | Single-Split |
| 2008 | M-Serie | MUZ-GB50VA-E3 | MUZ-GB50VA-E3 | Type B | CN606 | Single-Split |
| 2008 | M-Serie | MUZ-HC35VAB-E2 | MUZ-HC35VAB-E2 | Type B | CN606 | Single-Split |
| 2008 | M-Serie | MUZ-HC35VA-E2 | MUZ-HC35VA-E2 | Type B | CN606 | Single-Split |
| 2009 | M-Serie | MUZ-FD50VA-E1 | MUZ-FD50VA-E1 | Type AD | CN605 | Single-Split |
| 2009 | M-Serie | MUZ-GE25VA-E1 | MUZ-GE25VA-E1 | Type B | CN606 | Single-Split |
| 2009 | M-Serie | MUZ-GE25VAH-E1 | MUZ-GE25VAH-E1 | Type B | CN606 | Single-Split |
| 2009 | M-Serie | MUZ-GE35VA-E1 | MUZ-GE35VA-E1 | Type B | CN606 | Single-Split |
| 2009 | M-Serie | MUZ-GE35VAH-E1 | MUZ-GE35VAH-E1 | Type B | CN606 | Single-Split |
| 2009 | M-Serie | MUZ-GE42VA-E1 | MUZ-GE42VA-E1 | Type B | CN606 | Single-Split |
| 2009 | M-Serie | MUZ-GE42VAH-E1 | MUZ-GE42VAH-E1 | Type B | CN606 | Single-Split |
| 2009 | M-Serie | MUZ-GE50VA-E1 | MUZ-GE50VA-E1 | Type B | CN606 | Single-Split |
| 2009 | M-Serie | MUZ-GE50VAH-E1 | MUZ-GE50VAH-E1 | Type B | CN606 | Single-Split |
| 2010 | M-Serie | MUZ-GE60VA-E1 | MUZ-GE60VA-E1 | Type C | CN806 | Single-Split |
| 2010 | M-Serie | MUZ-GE71VA-E1 | MUZ-GE71VA-E1 | Type C | CN806 | Single-Split |
| 2011 | M-Serie | MUZ-EF25VE-E1 | MUZ-EF25VE-E1 | Type C | CN606 | Single-Split |
| 2011 | M-Serie | MUZ-EF25VEH-E1 | MUZ-EF25VEH-E1 | Type C | CN606 | Single-Split |
| 2011 | M-Serie | MUZ-EF35VE-E1 | MUZ-EF35VE-E1 | Type C | CN606 | Single-Split |
| 2011 | M-Serie | MUZ-EF35VEH-E1 | MUZ-EF35VEH-E1 | Type C | CN606 | Single-Split |
| 2011 | M-Serie | MUZ-EF42VE-E1 | MUZ-EF42VE-E1 | Type C | CN606 | Single-Split |
| 2011 | M-Serie | MUZ-EF50VE-E1 | MUZ-EF50VE-E1 | Type C | CN606 | Single-Split |
| 2012 | M-Serie | MUZ-FH25VE-E1 | MUZ-FH25VE-E1 | Type C | CN606 | Single-Split |
| 2012 | M-Serie | MUZ-FH25VEHZ-E1 | MUZ-FH25VEHZ-E1 | Type C | CN606 | Single-Split |
| 2012 | M-Serie | MUZ-FH35VE-E1 | MUZ-FH35VE-E1 | Type C | CN606 | Single-Split |
| 2012 | M-Serie | MUZ-FH35VEHZ-E1 | MUZ-FH35VEHZ-E1 | Type C | CN606 | Single-Split |
| 2012 | M-Serie | MUZ-FH50VE-E1 | MUZ-FH50VE-E1 | Type C | CN806 | Single-Split |
| 2012 | M-Serie | MUZ-FH50VEHZ-E1 | MUZ-FH50VEHZ-E1 | Type C | CN806 | Single-Split |
| 2012 | M-Serie | MUZ-GE25VA-E2 | MUZ-GE25VA-E2 | Type B | CN606 | Single-Split |
| 2012 | M-Serie | MUZ-GE35VA-E2 | MUZ-GE35VA-E2 | Type B | CN606 | Single-Split |
| 2012 | M-Serie | MUZ-GE35VAH-E2 | MUZ-GE35VAH-E2 | Type B | CN606 | Single-Split |
| 2012 | M-Serie | MUZ-GF60VE-E1 | MUZ-GF60VE-E1 | Type C | CN806 | Single-Split |
| 2012 | M-Serie | MUZ-GF71VE-E1 | MUZ-GF71VE-E1 | Type C | CN806 | Single-Split |
| 2012 | M-Serie | MUZ-SF25VE-E1 | MUZ-SF25VE-E1 | Type C | CN606 | Single-Split |
| 2012 | M-Serie | MUZ-SF25VEH-E1 | MUZ-SF25VEH-E1 | Type C | CN606 | Single-Split |
| 2012 | M-Serie | MUZ-SF35VE-E1 | MUZ-SF35VE-E1 | Type C | CN606 | Single-Split |
| 2012 | M-Serie | MUZ-SF35VEH-E1 | MUZ-SF35VEH-E1 | Type C | CN606 | Single-Split |
| 2012 | M-Serie | MUZ-SF42VE-E1 | MUZ-SF42VE-E1 | Type C | CN606 | Single-Split |
| 2012 | M-Serie | MUZ-SF42VEH-E1 | MUZ-SF42VEH-E1 | Type C | CN606 | Single-Split |
| 2012 | M-Serie | MUZ-SF50VE-E1 | MUZ-SF50VE-E1 | Type C | CN606 | Single-Split |

| Jahr | Gerätefamilie | Geräteserie | Gerätmodell | Relaiskabel | Anschluss | Anschlussmöglichkeit |
|------|---------------|-------------------|-------------------|-------------|-----------|----------------------|
| 2012 | M-Serie | MUZ-SF50VEH-E1 | MUZ-SF50VEH-E1 | Type C | CN606 | Single-Split |
| 2013 | M-Serie | MUFZ-KJ25VE-E1 | MUFZ-KJ25VE-E1 | Type C | CN606 | Single-Split |
| 2013 | M-Serie | MUFZ-KJ25VEHZ-E1 | MUFZ-KJ25VEHZ-E1 | Type C | CN606 | Single-Split |
| 2013 | M-Serie | MUFZ-KJ35VE-E1 | MUFZ-KJ35VE-E1 | Type C | CN606 | Single-Split |
| 2013 | M-Serie | MUFZ-KJ35VEHZ-E1 | MUFZ-KJ35VEHZ-E1 | Type C | CN606 | Single-Split |
| 2013 | M-Serie | MUFZ-KJ50VE-E1 | MUFZ-KJ50VE-E1 | Type C | CN806 | Single-Split |
| 2013 | M-Serie | MUFZ-KJ50VEHZ-E1 | MUFZ-KJ50VEHZ-E1 | Type C | CN806 | Single-Split |
| 2013 | M-Serie | MUZ-EF25VE-E2 | MUZ-EF25VE-E2 | Type C | CN606 | Single-Split |
| 2013 | M-Serie | MUZ-EF25VEH-E2 | MUZ-EF25VEH-E2 | Type C | CN606 | Single-Split |
| 2013 | M-Serie | MUZ-EF35VE-E2 | MUZ-EF35VE-E2 | Type C | CN606 | Single-Split |
| 2013 | M-Serie | MUZ-EF35VEH-E2 | MUZ-EF35VEH-E2 | Type C | CN606 | Single-Split |
| 2013 | M-Serie | MUZ-EF42VE-E2 | MUZ-EF42VE-E2 | Type C | CN606 | Single-Split |
| 2013 | M-Serie | MUZ-EF50VE-E2 | MUZ-EF50VE-E2 | Type C | CN606 | Single-Split |
| 2013 | M-Serie | MUZ-HJ25VA-E1 | MUZ-HJ25VA-E1 | Type C | CN606 | Single-Split |
| 2013 | M-Serie | MUZ-HJ35VA-E1 | MUZ-HJ35VA-E1 | Type C | CN606 | Single-Split |
| 2013 | M-Serie | MUZ-HJ50VA-E1 | MUZ-HJ50VA-E1 | Type C | CN606 | Single-Split |
| 2014 | M-Serie | MUFZ-KJ25VE-ER1 | MUFZ-KJ25VE-ER1 | Type C | CN606 | Single-Split |
| 2014 | M-Serie | MUFZ-KJ25VEHZ-ER1 | MUFZ-KJ25VEHZ-ER1 | Type C | CN606 | Single-Split |
| 2014 | M-Serie | MUFZ-KJ35VE-ER1 | MUFZ-KJ35VE-ER1 | Type C | CN606 | Single-Split |
| 2014 | M-Serie | MUFZ-KJ35VEHZ-ER1 | MUFZ-KJ35VEHZ-ER1 | Type C | CN606 | Single-Split |
| 2014 | M-Serie | MUFZ-KJ50VE-ER1 | MUFZ-KJ50VE-ER1 | Type C | CN806 | Single-Split |
| 2014 | M-Serie | MUFZ-KJ50VEHZ-ER1 | MUFZ-KJ50VEHZ-ER1 | Type C | CN806 | Single-Split |
| 2014 | M-Serie | MUZ-EF25VE-E3 | MUZ-EF25VE-E3 | Type C | CN606 | Single-Split |
| 2014 | M-Serie | MUZ-EF25VE-ER3 | MUZ-EF25VE-ER3 | Type C | CN606 | Single-Split |
| 2014 | M-Serie | MUZ-EF25VE-ET4 | MUZ-EF25VE-ET4 | Type C | CN606 | Single-Split |
| 2014 | M-Serie | MUZ-EF25VEH-ER2 | MUZ-EF25VEH-ER2 | Type C | CN606 | Single-Split |
| 2014 | M-Serie | MUZ-EF25VEH-ET3 | MUZ-EF25VEH-ET3 | Type C | CN606 | Single-Split |
| 2014 | M-Serie | MUZ-EF35VE-E3 | MUZ-EF35VE-E3 | Type C | CN606 | Single-Split |
| 2014 | M-Serie | MUZ-EF35VE-ER3 | MUZ-EF35VE-ER3 | Type C | CN606 | Single-Split |
| 2014 | M-Serie | MUZ-EF35VE-ET4 | MUZ-EF35VE-ET4 | Type C | CN606 | Single-Split |
| 2014 | M-Serie | MUZ-EF35VEH-ER2 | MUZ-EF35VEH-ER2 | Type C | CN606 | Single-Split |
| 2014 | M-Serie | MUZ-EF35VEH-ET3 | MUZ-EF35VEH-ET3 | Type C | CN606 | Single-Split |
| 2014 | M-Serie | MUZ-EF42VE-E3 | MUZ-EF42VE-E3 | Type C | CN606 | Single-Split |
| 2014 | M-Serie | MUZ-EF42VE-ER3 | MUZ-EF42VE-ER3 | Type C | CN606 | Single-Split |
| 2014 | M-Serie | MUZ-EF42VE-ET4 | MUZ-EF42VE-ET4 | Type C | CN606 | Single-Split |
| 2014 | M-Serie | MUZ-EF50VE-ER2 | MUZ-EF50VE-ER2 | Type C | CN606 | Single-Split |
| 2014 | M-Serie | MUZ-FH25VE-E2 | MUZ-FH25VE-E2 | Type C | CN606 | Single-Split |
| 2014 | M-Serie | MUZ-FH25VE-E3 | MUZ-FH25VE-E3 | Type C | CN606 | Single-Split |
| 2014 | M-Serie | MUZ-FH25VE-ER1 | MUZ-FH25VE-ER1 | Type C | CN606 | Single-Split |
| 2014 | M-Serie | MUZ-FH25VE-ER2 | MUZ-FH25VE-ER2 | Type C | CN606 | Single-Split |
| 2014 | M-Serie | MUZ-FH25VE-ER3 | MUZ-FH25VE-ER3 | Type C | CN606 | Single-Split |
| 2014 | M-Serie | MUZ-FH25VEHZ-E3 | MUZ-FH25VEHZ-E3 | Type C | CN606 | Single-Split |
| 2014 | M-Serie | MUZ-FH25VEHZ-ER1 | MUZ-FH25VEHZ-ER1 | Type C | CN606 | Single-Split |
| 2014 | M-Serie | MUZ-FH25VEHZ-ER3 | MUZ-FH25VEHZ-ER3 | Type C | CN606 | Single-Split |
| 2014 | M-Serie | MUZ-FH35VE-E2 | MUZ-FH35VE-E2 | Type C | CN606 | Single-Split |
| 2014 | M-Serie | MUZ-FH35VE-ER1 | MUZ-FH35VE-ER1 | Type C | CN606 | Single-Split |
| 2014 | M-Serie | MUZ-FH35VE-ER2 | MUZ-FH35VE-ER2 | Type C | CN606 | Single-Split |
| 2014 | M-Serie | MUZ-FH35VEHZ-ER1 | MUZ-FH35VEHZ-ER1 | Type C | CN606 | Single-Split |
| 2014 | M-Serie | MUZ-FH50VE-ER1 | MUZ-FH50VE-ER1 | Type C | CN806 | Single-Split |
| 2014 | M-Serie | MUZ-FH50VEHZ-ER1 | MUZ-FH50VEHZ-ER1 | Type C | CN806 | Single-Split |
| 2014 | M-Serie | MUZ-GF60VE-ER1 | MUZ-GF60VE-ER1 | Type C | CN806 | Single-Split |
| 2014 | M-Serie | MUZ-GF71VE-ER1 | MUZ-GF71VE-ER1 | Type C | CN806 | Single-Split |
| 2014 | M-Serie | MUZ-HJ25VA-ER1 | MUZ-HJ25VA-ER1 | Type C | CN606 | Single-Split |

| Jahr | Gerätefamilie | Geräteserie | Gerätemodell | Relaiskabel | Anschluss | Anschlussmöglichkeit |
|------|---------------|-----------------|-----------------|-------------|-----------|----------------------|
| 2014 | M-Serie | MUZ-HJ25VA-ER1 | MUZ-HJ25VA-ER1 | Type C | CN606 | Single-Split |
| 2014 | M-Serie | MUZ-HJ35VA-ER1 | MUZ-HJ35VA-ER1 | Type C | CN606 | Single-Split |
| 2014 | M-Serie | MUZ-HJ50VA-ER1 | MUZ-HJ50VA-ER1 | Type C | CN606 | Single-Split |
| 2014 | M-Serie | MUZ-SF25VE-E2 | MUZ-SF25VE-E2 | Type C | CN606 | Single-Split |
| 2014 | M-Serie | MUZ-SF25VE-ER2 | MUZ-SF25VE-ER2 | Type C | CN606 | Single-Split |
| 2014 | M-Serie | MUZ-SF25VE-ET3 | MUZ-SF25VE-ET3 | Type C | CN606 | Single-Split |
| 2014 | M-Serie | MUZ-SF25VEH-ER1 | MUZ-SF25VEH-ER1 | Type C | CN606 | Single-Split |
| 2014 | M-Serie | MUZ-SF25VEH-ET2 | MUZ-SF25VEH-ET2 | Type C | CN606 | Single-Split |
| 2014 | M-Serie | MUZ-SF35VE-E2 | MUZ-SF35VE-E2 | Type C | CN606 | Single-Split |
| 2014 | M-Serie | MUZ-SF35VE-ER2 | MUZ-SF35VE-ER2 | Type C | CN606 | Single-Split |
| 2014 | M-Serie | MUZ-SF35VE-ET3 | MUZ-SF35VE-ET3 | Type C | CN606 | Single-Split |
| 2014 | M-Serie | MUZ-SF35VEH-ER1 | MUZ-SF35VEH-ER1 | Type C | CN606 | Single-Split |
| 2014 | M-Serie | MUZ-SF35VEH-ET2 | MUZ-SF35VEH-ET2 | Type C | CN606 | Single-Split |
| 2014 | M-Serie | MUZ-SF42VE-E2 | MUZ-SF42VE-E2 | Type C | CN606 | Single-Split |
| 2014 | M-Serie | MUZ-SF42VE-ER2 | MUZ-SF42VE-ER2 | Type C | CN606 | Single-Split |
| 2014 | M-Serie | MUZ-SF42VE-ET3 | MUZ-SF42VE-ET3 | Type C | CN606 | Single-Split |
| 2014 | M-Serie | MUZ-SF42VEH-ER1 | MUZ-SF42VEH-ER1 | Type C | CN606 | Single-Split |
| 2014 | M-Serie | MUZ-SF42VEH-ET2 | MUZ-SF42VEH-ET2 | Type C | CN606 | Single-Split |
| 2014 | M-Serie | MUZ-SF50VE-ER1 | MUZ-SF50VE-ER1 | Type C | CN606 | Single-Split |
| 2014 | M-Serie | MUZ-SF50VEH-ER1 | MUZ-SF50VEH-ER1 | Type C | CN606 | Single-Split |
| 2015 | M-Serie | MUZ-DM25VA-E1 | MUZ-DM25VA-E1 | Type C | CN606 | Single-Split |
| 2015 | M-Serie | MUZ-DM25VA-ER1 | MUZ-DM25VA-ER1 | Type C | CN606 | Single-Split |
| 2015 | M-Serie | MUZ-DM25VA-ET1 | MUZ-DM25VA-ET1 | Type C | CN606 | Single-Split |
| 2015 | M-Serie | MUZ-DM35VA-E1 | MUZ-DM35VA-E1 | Type C | CN606 | Single-Split |
| 2015 | M-Serie | MUZ-DM35VA-ER1 | MUZ-DM35VA-ER1 | Type C | CN606 | Single-Split |
| 2015 | M-Serie | MUZ-DM35VA-ET1 | MUZ-DM35VA-ET1 | Type C | CN606 | Single-Split |
| 2015 | M-Serie | MUZ-EF25VE-E4 | MUZ-EF25VE-E4 | Type C | CN606 | Single-Split |
| 2015 | M-Serie | MUZ-EF25VE-E5 | MUZ-EF25VE-E5 | Type C | CN606 | Single-Split |
| 2015 | M-Serie | MUZ-EF25VE-ER4 | MUZ-EF25VE-ER4 | Type C | CN606 | Single-Split |
| 2015 | M-Serie | MUZ-EF25VE-ER5 | MUZ-EF25VE-ER5 | Type C | CN606 | Single-Split |
| 2015 | M-Serie | MUZ-EF25VE-ET3 | MUZ-EF25VE-ET3 | Type C | CN606 | Single-Split |
| 2015 | M-Serie | MUZ-EF25VE-ET5 | MUZ-EF25VE-ET5 | Type C | CN606 | Single-Split |
| 2015 | M-Serie | MUZ-EF25VEH-E3 | MUZ-EF25VEH-E3 | Type C | CN606 | Single-Split |
| 2015 | M-Serie | MUZ-EF25VEH-E4 | MUZ-EF25VEH-E4 | Type C | CN606 | Single-Split |
| 2015 | M-Serie | MUZ-EF25VEH-ER3 | MUZ-EF25VEH-ER3 | Type C | CN606 | Single-Split |
| 2015 | M-Serie | MUZ-EF25VEH-ET2 | MUZ-EF25VEH-ET2 | Type C | CN606 | Single-Split |
| 2015 | M-Serie | MUZ-EF35VE-E4 | MUZ-EF35VE-E4 | Type C | CN606 | Single-Split |
| 2015 | M-Serie | MUZ-EF35VE-E5 | MUZ-EF35VE-E5 | Type C | CN606 | Single-Split |
| 2015 | M-Serie | MUZ-EF35VE-ER4 | MUZ-EF35VE-ER4 | Type C | CN606 | Single-Split |
| 2015 | M-Serie | MUZ-EF35VE-ER5 | MUZ-EF35VE-ER5 | Type C | CN606 | Single-Split |
| 2015 | M-Serie | MUZ-EF35VE-ET3 | MUZ-EF35VE-ET3 | Type C | CN606 | Single-Split |
| 2015 | M-Serie | MUZ-EF35VE-ET5 | MUZ-EF35VE-ET5 | Type C | CN606 | Single-Split |
| 2015 | M-Serie | MUZ-EF35VEH-E3 | MUZ-EF35VEH-E3 | Type C | CN606 | Single-Split |
| 2015 | M-Serie | MUZ-EF35VEH-E4 | MUZ-EF35VEH-E4 | Type C | CN606 | Single-Split |
| 2015 | M-Serie | MUZ-EF35VEH-ER3 | MUZ-EF35VEH-ER3 | Type C | CN606 | Single-Split |
| 2015 | M-Serie | MUZ-EF35VEH-ET2 | MUZ-EF35VEH-ET2 | Type C | CN606 | Single-Split |
| 2015 | M-Serie | MUZ-EF42VE-E4 | MUZ-EF42VE-E4 | Type C | CN606 | Single-Split |
| 2015 | M-Serie | MUZ-EF42VE-E5 | MUZ-EF42VE-E5 | Type C | CN606 | Single-Split |
| 2015 | M-Serie | MUZ-EF42VE-ER4 | MUZ-EF42VE-ER4 | Type C | CN606 | Single-Split |
| 2015 | M-Serie | MUZ-EF42VE-ER5 | MUZ-EF42VE-ER5 | Type C | CN606 | Single-Split |
| 2015 | M-Serie | MUZ-EF42VE-ET3 | MUZ-EF42VE-ET3 | Type C | CN606 | Single-Split |
| 2015 | M-Serie | MUZ-EF42VE-ET5 | MUZ-EF42VE-ET5 | Type C | CN606 | Single-Split |
| 2015 | M-Serie | MUZ-EF50VE-E3 | MUZ-EF50VE-E3 | Type C | CN606 | Single-Split |

| Jahr | Gerätefamilie | Geräteserie | Gerätmodell | Relaiskabel | Anschluss | Anschlussmöglichkeit |
|------|---------------|------------------|------------------|-------------|-----------|----------------------|
| 2015 | M-Serie | MUZ-EF50VE-ER3 | MUZ-EF50VE-ER3 | Type C | CN606 | Single-Split |
| 2015 | M-Serie | MUZ-EF50VE-ET2 | MUZ-EF50VE-ET2 | Type C | CN606 | Single-Split |
| 2015 | M-Serie | MUZ-EF50VE-ET3 | MUZ-EF50VE-ET3 | Type C | CN606 | Single-Split |
| 2015 | M-Serie | MUZ-FH25VE-E4 | MUZ-FH25VE-E4 | Type C | CN606 | Single-Split |
| 2015 | M-Serie | MUZ-FH25VE-ER4 | MUZ-FH25VE-ER4 | Type C | CN606 | Single-Split |
| 2015 | M-Serie | MUZ-FH25VE-ET2 | MUZ-FH25VE-ET2 | Type C | CN606 | Single-Split |
| 2015 | M-Serie | MUZ-FH25VE-ET3 | MUZ-FH25VE-ET3 | Type C | CN606 | Single-Split |
| 2015 | M-Serie | MUZ-FH25VEHZ-E4 | MUZ-FH25VEHZ-E4 | Type C | CN606 | Single-Split |
| 2015 | M-Serie | MUZ-FH25VEHZ-ER4 | MUZ-FH25VEHZ-ER4 | Type C | CN606 | Single-Split |
| 2015 | M-Serie | MUZ-FH25VEHZ-ET1 | MUZ-FH25VEHZ-ET1 | Type C | CN606 | Single-Split |
| 2015 | M-Serie | MUZ-FH25VEHZ-ET2 | MUZ-FH25VEHZ-ET2 | Type C | CN606 | Single-Split |
| 2015 | M-Serie | MUZ-FH35VE-E3 | MUZ-FH35VE-E3 | Type C | CN606 | Single-Split |
| 2015 | M-Serie | MUZ-FH35VE-ER3 | MUZ-FH35VE-ER3 | Type C | CN606 | Single-Split |
| 2015 | M-Serie | MUZ-FH35VE-ET2 | MUZ-FH35VE-ET2 | Type C | CN606 | Single-Split |
| 2015 | M-Serie | MUZ-FH35VE-ET3 | MUZ-FH35VE-ET3 | Type C | CN606 | Single-Split |
| 2015 | M-Serie | MUZ-FH35VEHZ-E2 | MUZ-FH35VEHZ-E2 | Type C | CN606 | Single-Split |
| 2015 | M-Serie | MUZ-FH35VEHZ-ER2 | MUZ-FH35VEHZ-ER2 | Type C | CN606 | Single-Split |
| 2015 | M-Serie | MUZ-FH35VEHZ-ET1 | MUZ-FH35VEHZ-ET1 | Type C | CN606 | Single-Split |
| 2015 | M-Serie | MUZ-FH35VEHZ-ET2 | MUZ-FH35VEHZ-ET2 | Type C | CN606 | Single-Split |
| 2015 | M-Serie | MUZ-FH50VE-E2 | MUZ-FH50VE-E2 | Type C | CN806 | Single-Split |
| 2015 | M-Serie | MUZ-FH50VE-ER2 | MUZ-FH50VE-ER2 | Type C | CN806 | Single-Split |
| 2015 | M-Serie | MUZ-FH50VE-ET1 | MUZ-FH50VE-ET1 | Type C | CN806 | Single-Split |
| 2015 | M-Serie | MUZ-FH50VE-ET2 | MUZ-FH50VE-ET2 | Type C | CN806 | Single-Split |
| 2015 | M-Serie | MUZ-FH50VEHZ-E2 | MUZ-FH50VEHZ-E2 | Type C | CN806 | Single-Split |
| 2015 | M-Serie | MUZ-FH50VEHZ-ER2 | MUZ-FH50VEHZ-ER2 | Type C | CN806 | Single-Split |
| 2015 | M-Serie | MUZ-FH50VEHZ-ET1 | MUZ-FH50VEHZ-ET1 | Type C | CN806 | Single-Split |
| 2015 | M-Serie | MUZ-FH50VEHZ-ET2 | MUZ-FH50VEHZ-ET2 | Type C | CN806 | Single-Split |
| 2015 | M-Serie | MUZ-GF60VE-E2 | MUZ-GF60VE-E2 | Type C | CN806 | Single-Split |
| 2015 | M-Serie | MUZ-GF60VE-ER2 | MUZ-GF60VE-ER2 | Type C | CN806 | Single-Split |
| 2015 | M-Serie | MUZ-GF60VE-ET1 | MUZ-GF60VE-ET1 | Type C | CN806 | Single-Split |
| 2015 | M-Serie | MUZ-GF60VE-ET2 | MUZ-GF60VE-ET2 | Type C | CN806 | Single-Split |
| 2015 | M-Serie | MUZ-GF71VE-E2 | MUZ-GF71VE-E2 | Type C | CN806 | Single-Split |
| 2015 | M-Serie | MUZ-GF71VE-ER2 | MUZ-GF71VE-ER2 | Type C | CN806 | Single-Split |
| 2015 | M-Serie | MUZ-GF71VE-ET1 | MUZ-GF71VE-ET1 | Type C | CN806 | Single-Split |
| 2015 | M-Serie | MUZ-GF71VE-ET2 | MUZ-GF71VE-ET2 | Type C | CN806 | Single-Split |
| 2015 | M-Serie | MUZ-HJ25VA-E2 | MUZ-HJ25VA-E2 | Type C | CN606 | Single-Split |
| 2015 | M-Serie | MUZ-HJ25VA-ER2 | MUZ-HJ25VA-ER2 | Type C | CN606 | Single-Split |
| 2015 | M-Serie | MUZ-HJ25VA-ET1 | MUZ-HJ25VA-ET1 | Type C | CN606 | Single-Split |
| 2015 | M-Serie | MUZ-HJ25VA-ET2 | MUZ-HJ25VA-ET2 | Type C | CN606 | Single-Split |
| 2015 | M-Serie | MUZ-HJ35VA-E3 | MUZ-HJ35VA-E3 | Type C | CN606 | Single-Split |
| 2015 | M-Serie | MUZ-HJ35VA-ER3 | MUZ-HJ35VA-ER3 | Type C | CN606 | Single-Split |
| 2015 | M-Serie | MUZ-HJ35VA-ET1 | MUZ-HJ35VA-ET1 | Type C | CN606 | Single-Split |
| 2015 | M-Serie | MUZ-HJ35VA-ET2 | MUZ-HJ35VA-ET2 | Type C | CN606 | Single-Split |
| 2015 | M-Serie | MUZ-HJ50VA-E2 | MUZ-HJ50VA-E2 | Type C | CN606 | Single-Split |
| 2015 | M-Serie | MUZ-HJ50VA-ER2 | MUZ-HJ50VA-ER2 | Type C | CN606 | Single-Split |
| 2015 | M-Serie | MUZ-HJ50VA-ET1 | MUZ-HJ50VA-ET1 | Type C | CN606 | Single-Split |
| 2015 | M-Serie | MUZ-HJ50VA-ET2 | MUZ-HJ50VA-ET2 | Type C | CN606 | Single-Split |
| 2015 | M-Serie | MUZ-HJ60VA-E1 | MUZ-HJ60VA-E1 | Type C | CN606 | Single-Split |
| 2015 | M-Serie | MUZ-HJ60VA-E2 | MUZ-HJ60VA-E2 | Type C | CN606 | Single-Split |
| 2015 | M-Serie | MUZ-HJ60VA-ER1 | MUZ-HJ60VA-ER1 | Type C | CN606 | Single-Split |
| 2015 | M-Serie | MUZ-HJ60VA-ET1 | MUZ-HJ60VA-ET1 | Type C | CN606 | Single-Split |
| 2015 | M-Serie | MUZ-HJ71VA-E1 | MUZ-HJ71VA-E1 | Type C | CN606 | Single-Split |
| 2015 | M-Serie | MUZ-HJ71VA-E2 | MUZ-HJ71VA-E2 | Type C | CN606 | Single-Split |

| Jahr | Gerätefamilie | Geräteserie | Gerätmodell | Relaiskabel | Anschluss | Anschlussmöglichkeit |
|------|---------------|------------------|------------------|-------------|-----------|----------------------|
| 2015 | M-Serie | MUZ-HJ71VA-ER1 | MUZ-HJ71VA-ER1 | Type C | CN606 | Single-Split |
| 2015 | M-Serie | MUZ-HJ71VA-ET1 | MUZ-HJ71VA-ET1 | Type C | CN606 | Single-Split |
| 2015 | M-Serie | MUZ-SF25VE-E3 | MUZ-SF25VE-E3 | Type C | CN606 | Single-Split |
| 2015 | M-Serie | MUZ-SF25VE-E4 | MUZ-SF25VE-E4 | Type C | CN606 | Single-Split |
| 2015 | M-Serie | MUZ-SF25VE-ER3 | MUZ-SF25VE-ER3 | Type C | CN606 | Single-Split |
| 2015 | M-Serie | MUZ-SF25VE-ER4 | MUZ-SF25VE-ER4 | Type C | CN606 | Single-Split |
| 2015 | M-Serie | MUZ-SF25VE-ET2 | MUZ-SF25VE-ET2 | Type C | CN606 | Single-Split |
| 2015 | M-Serie | MUZ-SF25VE-ET4 | MUZ-SF25VE-ET4 | Type C | CN606 | Single-Split |
| 2015 | M-Serie | MUZ-SF25VEH-E2 | MUZ-SF25VEH-E2 | Type C | CN606 | Single-Split |
| 2015 | M-Serie | MUZ-SF25VEH-E3 | MUZ-SF25VEH-E3 | Type C | CN606 | Single-Split |
| 2015 | M-Serie | MUZ-SF25VEH-ER2 | MUZ-SF25VEH-ER2 | Type C | CN606 | Single-Split |
| 2015 | M-Serie | MUZ-SF25VEH-ET1 | MUZ-SF25VEH-ET1 | Type C | CN606 | Single-Split |
| 2015 | M-Serie | MUZ-SF35VE-E3 | MUZ-SF35VE-E3 | Type C | CN606 | Single-Split |
| 2015 | M-Serie | MUZ-SF35VE-E4 | MUZ-SF35VE-E4 | Type C | CN606 | Single-Split |
| 2015 | M-Serie | MUZ-SF35VE-ER3 | MUZ-SF35VE-ER3 | Type C | CN606 | Single-Split |
| 2015 | M-Serie | MUZ-SF35VE-ER4 | MUZ-SF35VE-ER4 | Type C | CN606 | Single-Split |
| 2015 | M-Serie | MUZ-SF35VE-ET2 | MUZ-SF35VE-ET2 | Type C | CN606 | Single-Split |
| 2015 | M-Serie | MUZ-SF35VE-ET4 | MUZ-SF35VE-ET4 | Type C | CN606 | Single-Split |
| 2015 | M-Serie | MUZ-SF35VEH-E2 | MUZ-SF35VEH-E2 | Type C | CN606 | Single-Split |
| 2015 | M-Serie | MUZ-SF35VEH-E3 | MUZ-SF35VEH-E3 | Type C | CN606 | Single-Split |
| 2015 | M-Serie | MUZ-SF35VEH-ER2 | MUZ-SF35VEH-ER2 | Type C | CN606 | Single-Split |
| 2015 | M-Serie | MUZ-SF35VEH-ET1 | MUZ-SF35VEH-ET1 | Type C | CN606 | Single-Split |
| 2015 | M-Serie | MUZ-SF42VE-E3 | MUZ-SF42VE-E3 | Type C | CN606 | Single-Split |
| 2015 | M-Serie | MUZ-SF42VE-E4 | MUZ-SF42VE-E4 | Type C | CN606 | Single-Split |
| 2015 | M-Serie | MUZ-SF42VE-ER3 | MUZ-SF42VE-ER3 | Type C | CN606 | Single-Split |
| 2015 | M-Serie | MUZ-SF42VE-ER4 | MUZ-SF42VE-ER4 | Type C | CN606 | Single-Split |
| 2015 | M-Serie | MUZ-SF42VE-ET2 | MUZ-SF42VE-ET2 | Type C | CN606 | Single-Split |
| 2015 | M-Serie | MUZ-SF42VE-ET4 | MUZ-SF42VE-ET4 | Type C | CN606 | Single-Split |
| 2015 | M-Serie | MUZ-SF42VEH-E2 | MUZ-SF42VEH-E2 | Type C | CN606 | Single-Split |
| 2015 | M-Serie | MUZ-SF42VEH-E3 | MUZ-SF42VEH-E3 | Type C | CN606 | Single-Split |
| 2015 | M-Serie | MUZ-SF42VEH-ER2 | MUZ-SF42VEH-ER2 | Type C | CN606 | Single-Split |
| 2015 | M-Serie | MUZ-SF42VEH-ET1 | MUZ-SF42VEH-ET1 | Type C | CN606 | Single-Split |
| 2015 | M-Serie | MUZ-SF50VE-E2 | MUZ-SF50VE-E2 | Type C | CN606 | Single-Split |
| 2015 | M-Serie | MUZ-SF50VE-ER2 | MUZ-SF50VE-ER2 | Type C | CN606 | Single-Split |
| 2015 | M-Serie | MUZ-SF50VE-ET1 | MUZ-SF50VE-ET1 | Type C | CN606 | Single-Split |
| 2015 | M-Serie | MUZ-SF50VE-ET2 | MUZ-SF50VE-ET2 | Type C | CN606 | Single-Split |
| 2015 | M-Serie | MUZ-SF50VEH-E2 | MUZ-SF50VEH-E2 | Type C | CN606 | Single-Split |
| 2015 | M-Serie | MUZ-SF50VEH-ET1 | MUZ-SF50VEH-ET1 | Type C | CN606 | Single-Split |
| 2016 | M-Serie | MUZ-LN25VG-E1 | MUZ-LN25VG-E1 | Type C | CN606 | Single-Split |
| 2016 | M-Serie | MUZ-LN25VG-ER1 | MUZ-LN25VG-ER1 | Type C | CN606 | Single-Split |
| 2016 | M-Serie | MUZ-LN25VG-ET1 | MUZ-LN25VG-ET1 | Type C | CN606 | Single-Split |
| 2016 | M-Serie | MUZ-LN25VGHZ-E1 | MUZ-LN25VGHZ-E1 | Type C | CN606 | Single-Split |
| 2016 | M-Serie | MUZ-LN25VGHZ-ER1 | MUZ-LN25VGHZ-ER1 | Type C | CN606 | Single-Split |
| 2016 | M-Serie | MUZ-LN25VGHZ-ET1 | MUZ-LN25VGHZ-ET1 | Type C | CN606 | Single-Split |
| 2016 | M-Serie | MUZ-LN35VG-E1 | MUZ-LN35VG-E1 | Type C | CN606 | Single-Split |
| 2016 | M-Serie | MUZ-LN35VG-ER1 | MUZ-LN35VG-ER1 | Type C | CN606 | Single-Split |
| 2016 | M-Serie | MUZ-LN35VG-ET1 | MUZ-LN35VG-ET1 | Type C | CN606 | Single-Split |
| 2016 | M-Serie | MUZ-LN35VGHZ-E1 | MUZ-LN35VGHZ-E1 | Type C | CN606 | Single-Split |
| 2016 | M-Serie | MUZ-LN35VGHZ-ER1 | MUZ-LN35VGHZ-ER1 | Type C | CN606 | Single-Split |
| 2016 | M-Serie | MUZ-LN35VGHZ-ET1 | MUZ-LN35VGHZ-ET1 | Type C | CN606 | Single-Split |
| 2016 | M-Serie | MUZ-LN50VG-E1 | MUZ-LN50VG-E1 | Type C | CN606 | Single-Split |
| 2016 | M-Serie | MUZ-LN50VG-ER1 | MUZ-LN50VG-ER1 | Type C | CN606 | Single-Split |
| 2016 | M-Serie | MUZ-LN50VG-ET1 | MUZ-LN50VG-ET1 | Type C | CN606 | Single-Split |

| Jahr | Gerätefamilie | Geräteserie | Gerätmodell | Relaiskabel | Anschluss | Anschlussmöglichkeit |
|------------------------------|---------------|------------------|------------------|-------------|-----------|----------------------|
| 2016 | M-Serie | MUZ-LN50VGHZ-E1 | MUZ-LN50VGHZ-E1 | Type C | CN606 | Single-Split |
| 2016 | M-Serie | MUZ-LN50VGHZ-ER1 | MUZ-LN50VGHZ-ER1 | Type C | CN606 | Single-Split |
| 2016 | M-Serie | MUZ-LN50VGHZ-ET1 | MUZ-LN50VGHZ-ET1 | Type C | CN606 | Single-Split |
| 2016 | M-Serie | MUZ-LN60VG-E1 | MUZ-LN60VG-E1 | Type C | CN606 | Single-Split |
| 2016 | M-Serie | MUZ-LN60VG-ER1 | MUZ-LN60VG-ER1 | Type C | CN606 | Single-Split |
| 2016 | M-Serie | MUZ-LN60VG-ET1 | MUZ-LN60VG-ET1 | Type C | CN606 | Single-Split |
| 2016 | M-Serie | MUZ-WN25VA-E1 | MUZ-WN25VA-E1 | Type C | CN606 | Single-Split |
| 2016 | M-Serie | MUZ-WN25VA-ER1 | MUZ-WN25VA-ER1 | Type C | CN606 | Single-Split |
| 2016 | M-Serie | MUZ-WN25VA-ET1 | MUZ-WN25VA-ET1 | Type C | CN606 | Single-Split |
| 2016 | M-Serie | MUZ-WN35VA-ET1 | MUZ-WN35VA-ET1 | Type C | CN606 | Single-Split |
| 2017 | M-Serie | MUZ-DM50VA-ER1 | MUZ-DM50VA-ER1 | Type C | CN606 | Single-Split |
| 2017 | M-Serie | MUZ-DM60VA-ER1 | MUZ-DM60VA-ER1 | Type C | CN606 | Single-Split |
| 2017 | M-Serie | MUZ-DM71VA-ER1 | MUZ-DM71VA-ER1 | Type C | CN606 | Single-Split |
| 2017 | M-Serie | MUZ-HC35VAB-E1 | MUZ-HC35VAB-E1 | Type B | CN606 | Single-Split |
| 2017 | M-Serie | MUZ-HC35VA-E1 | MUZ-HC35VA-E1 | Type B | CN606 | Single-Split |
| 2017 | M-Serie | MUZ-WN35VA-E1 | MUZ-WN35VA-E1 | Type C | CN606 | Single-Split |
| M-Serie – Multi-Split | | | | | | |
| 2015 | M-Serie | MXZ-2B30VA-E1 | MXZ-2B30VA-E1 | Type AD | CN606 | Multi-Split |
| 2015 | M-Serie | MXZ-2B40VA-E1 | MXZ-2B40VA-E1 | Type AD | CN606 | Multi-Split |
| 2015 | M-Serie | MXZ-2B52VA-E1 | MXZ-2B52VA-E1 | Type AD | CN606 | Multi-Split |
| 2015 | M-Serie | MXZ-2C30VA-E1 | MXZ-2C30VA-E1 | Type AD | CN606 | Multi-Split |
| 2015 | M-Serie | MXZ-2C40VA-E1 | MXZ-2C40VA-E1 | Type AD | CN606 | Multi-Split |
| 2015 | M-Serie | MXZ-2C52VA-E1 | MXZ-2C52VA-E1 | Type AD | CN606 | Multi-Split |
| 2015 | M-Serie | MXZ-2D33VA-E1 | MXZ-2D33VA-E1 | Type AD | CN606 | Multi-Split |
| 2015 | M-Serie | MXZ-2D33VA-E2 | MXZ-2D33VA-E2 | Type AD | CN606 | Multi-Split |
| 2015 | M-Serie | MXZ-2D33VA-ER2 | MXZ-2D33VA-ER2 | Type AD | CN606 | Multi-Split |
| 2015 | M-Serie | MXZ-2D33VA-ET2 | MXZ-2D33VA-ET2 | Type AD | CN606 | Multi-Split |
| 2015 | M-Serie | MXZ-2D40VA-E1 | MXZ-2D40VA-E1 | Type AD | CN606 | Multi-Split |
| 2015 | M-Serie | MXZ-2D40VA-ER2 | MXZ-2D40VA-ER2 | Type AD | CN606 | Multi-Split |
| 2015 | M-Serie | MXZ-2D42VA2-E3 | MXZ-2D42VA2-E3 | Type AD | CN606 | Multi-Split |
| 2015 | M-Serie | MXZ-2D42VA2-ER3 | MXZ-2D42VA2-ER3 | Type AD | CN606 | Multi-Split |
| 2015 | M-Serie | MXZ-2D42VA2-ET3 | MXZ-2D42VA2-ET3 | Type AD | CN606 | Multi-Split |
| 2015 | M-Serie | MXZ-2D42VA-E2 | MXZ-2D42VA-E2 | Type AD | CN606 | Multi-Split |
| 2015 | M-Serie | MXZ-2D42VA-E3 | MXZ-2D42VA-E3 | Type AD | CN606 | Multi-Split |
| 2015 | M-Serie | MXZ-2D42VA-ER3 | MXZ-2D42VA-ER3 | Type AD | CN606 | Multi-Split |
| 2015 | M-Serie | MXZ-2D42VA-ET2 | MXZ-2D42VA-ET2 | Type AD | CN606 | Multi-Split |
| 2015 | M-Serie | MXZ-2D42VA-ET3 | MXZ-2D42VA-ET3 | Type AD | CN606 | Multi-Split |
| 2015 | M-Serie | MXZ-2D53VA2-E3 | MXZ-2D53VA2-E3 | Type AD | CN606 | Multi-Split |
| 2015 | M-Serie | MXZ-2D53VA2-ER3 | MXZ-2D53VA2-ER3 | Type AD | CN606 | Multi-Split |
| 2015 | M-Serie | MXZ-2D53VA2-ET3 | MXZ-2D53VA2-ET3 | Type AD | CN606 | Multi-Split |
| 2015 | M-Serie | MXZ-2D53VA-E1 | MXZ-2D53VA-E1 | Type AD | CN606 | Multi-Split |
| 2015 | M-Serie | MXZ-2D53VA-E2 | MXZ-2D53VA-E2 | Type AD | CN606 | Multi-Split |
| 2015 | M-Serie | MXZ-2D53VA-E3 | MXZ-2D53VA-E3 | Type AD | CN606 | Multi-Split |
| 2015 | M-Serie | MXZ-2D53VA-ER2 | MXZ-2D53VA-ER2 | Type AD | CN606 | Multi-Split |
| 2015 | M-Serie | MXZ-2D53VA-ER3 | MXZ-2D53VA-ER3 | Type AD | CN606 | Multi-Split |
| 2015 | M-Serie | MXZ-2D53VA-ET2 | MXZ-2D53VA-ET2 | Type AD | CN606 | Multi-Split |
| 2015 | M-Serie | MXZ-2D53VA-ET3 | MXZ-2D53VA-ET3 | Type AD | CN606 | Multi-Split |
| 2015 | M-Serie | MXZ-2D53VAH2-E3 | MXZ-2D53VAH2-E3 | Type AD | CN606 | Multi-Split |
| 2015 | M-Serie | MXZ-2D53VAH-E1 | MXZ-2D53VAH-E1 | Type AD | CN606 | Multi-Split |
| 2015 | M-Serie | MXZ-2D53VAH-E2 | MXZ-2D53VAH-E2 | Type AD | CN606 | Multi-Split |
| 2015 | M-Serie | MXZ-2D53VAH-E3 | MXZ-2D53VAH-E3 | Type AD | CN606 | Multi-Split |
| 2015 | M-Serie | MXZ-2D53VAH-ER2 | MXZ-2D53VAH-ER2 | Type AD | CN606 | Multi-Split |
| 2015 | M-Serie | MXZ-2D53VAH-ER3 | MXZ-2D53VAH-ER3 | Type AD | CN606 | Multi-Split |

| Jahr | Gerätefamilie | Geräteserie | Gerätmodell | Relaiskabel | Anschluss | Anschlussmöglichkeit |
|------|---------------|-------------------|-------------------|-------------|-----------|----------------------|
| 2015 | M-Serie | MXZ-2DM40VA-E1 | MXZ-2DM40VA-E1 | Type AD | CN606 | Multi-Split |
| 2015 | M-Serie | MXZ-2DM40VA-ER1 | MXZ-2DM40VA-ER1 | Type AD | CN606 | Multi-Split |
| 2015 | M-Serie | MXZ-2DM40VA-ET1 | MXZ-2DM40VA-ET1 | Type AD | CN606 | Multi-Split |
| 2015 | M-Serie | MXZ-2E53VAHZ-E1 | MXZ-2E53VAHZ-E1 | Type C | CN861 | Multi-Split |
| 2015 | M-Serie | MXZ-2E53VAHZ-ER1 | MXZ-2E53VAHZ-ER1 | Type C | CN861 | Multi-Split |
| 2015 | M-Serie | MXZ-2HJ40VA-E1 | MXZ-2HJ40VA-E1 | Type AD | CN606 | Multi-Split |
| 2015 | M-Serie | MXZ-2HJ40VA-ER1 | MXZ-2HJ40VA-ER1 | Type AD | CN606 | Multi-Split |
| 2015 | M-Serie | MXZ-2HJ40VA-ET1 | MXZ-2HJ40VA-ET1 | Type AD | CN606 | Multi-Split |
| 2015 | M-Serie | MXZ-3B54VA-E1 | MXZ-3B54VA-E1 | Type AD | CN605 | Multi-Split |
| 2015 | M-Serie | MXZ-3B68VA-E1 | MXZ-3B68VA-E1 | Type AD | CN605 | Multi-Split |
| 2015 | M-Serie | MXZ-3C54VA-E1 | MXZ-3C54VA-E1 | Type AD | CN605 | Multi-Split |
| 2015 | M-Serie | MXZ-3C68VA-E1 | MXZ-3C68VA-E1 | Type AD | CN605 | Multi-Split |
| 2015 | M-Serie | MXZ-3D54VA2-E2 | MXZ-3D54VA2-E2 | Type C | CN861 | Multi-Split |
| 2015 | M-Serie | MXZ-3D54VA2-E3 | MXZ-3D54VA2-E3 | Type C | CN861 | Multi-Split |
| 2015 | M-Serie | MXZ-3D54VA2-ER2 | MXZ-3D54VA2-ER2 | Type C | CN861 | Multi-Split |
| 2015 | M-Serie | MXZ-3D54VA2-ER3 | MXZ-3D54VA2-ER3 | Type C | CN861 | Multi-Split |
| 2015 | M-Serie | MXZ-3D54VA2-ET2 | MXZ-3D54VA2-ET2 | Type C | CN861 | Multi-Split |
| 2015 | M-Serie | MXZ-3D54VA2-ET3 | MXZ-3D54VA2-ET3 | Type C | CN861 | Multi-Split |
| 2015 | M-Serie | MXZ-3D54VA-E1 | MXZ-3D54VA-E1 | Type C | CN861 | Multi-Split |
| 2015 | M-Serie | MXZ-3D68VA-E1 | MXZ-3D68VA-E1 | Type C | CN861 | Multi-Split |
| 2015 | M-Serie | MXZ-3D68VA-E2 | MXZ-3D68VA-E2 | Type C | CN861 | Multi-Split |
| 2015 | M-Serie | MXZ-3D68VA-E3 | MXZ-3D68VA-E3 | Type C | CN861 | Multi-Split |
| 2015 | M-Serie | MXZ-3D68VA-ER2 | MXZ-3D68VA-ER2 | Type C | CN861 | Multi-Split |
| 2015 | M-Serie | MXZ-3D68VA-ER3 | MXZ-3D68VA-ER3 | Type C | CN861 | Multi-Split |
| 2015 | M-Serie | MXZ-3D68VA-ET2 | MXZ-3D68VA-ET2 | Type C | CN861 | Multi-Split |
| 2015 | M-Serie | MXZ-3D68VA-ET3 | MXZ-3D68VA-ET3 | Type C | CN861 | Multi-Split |
| 2015 | M-Serie | MXZ-3DM50VA-E1 | MXZ-3DM50VA-E1 | Type C | CN861 | Multi-Split |
| 2015 | M-Serie | MXZ-3DM50VA-ER1 | MXZ-3DM50VA-ER1 | Type C | CN861 | Multi-Split |
| 2015 | M-Serie | MXZ-3DM50VA-ET1 | MXZ-3DM50VA-ET1 | Type C | CN861 | Multi-Split |
| 2015 | M-Serie | MXZ-3E54VA-E1 | MXZ-3E54VA-E1 | Type C | CN861 | Multi-Split |
| 2015 | M-Serie | MXZ-3E54VA-ER1 | MXZ-3E54VA-ER1 | Type C | CN861 | Multi-Split |
| 2015 | M-Serie | MXZ-3E54VA-ET1 | MXZ-3E54VA-ET1 | Type C | CN861 | Multi-Split |
| 2015 | M-Serie | MXZ-3E68VA-E1 | MXZ-3E68VA-E1 | Type C | CN861 | Multi-Split |
| 2015 | M-Serie | MXZ-3E68VA-ER1 | MXZ-3E68VA-ER1 | Type C | CN861 | Multi-Split |
| 2015 | M-Serie | MXZ-3E68VA-ET1 | MXZ-3E68VA-ET1 | Type C | CN861 | Multi-Split |
| 2015 | M-Serie | MXZ-3HJ50VA-E1 | MXZ-3HJ50VA-E1 | Type C | CN861 | Multi-Split |
| 2015 | M-Serie | MXZ-3HJ50VA-ER1 | MXZ-3HJ50VA-ER1 | Type C | CN861 | Multi-Split |
| 2015 | M-Serie | MXZ-3HJ50VA-ET1 | MXZ-3HJ50VA-ET1 | Type C | CN861 | Multi-Split |
| 2015 | M-Serie | MXZ-4B71VA-E1 | MXZ-4B71VA-E1 | Type AD | CN605 | Multi-Split |
| 2015 | M-Serie | MXZ-4B80VA-E1 | MXZ-4B80VA-E1 | Type AD | CN605 | Multi-Split |
| 2015 | M-Serie | MXZ-4C71VA-E1 | MXZ-4C71VA-E1 | Type AD | CN605 | Multi-Split |
| 2015 | M-Serie | MXZ-4C80VA2-E1 | MXZ-4C80VA2-E1 | Type C | CN605 | Multi-Split |
| 2015 | M-Serie | MXZ-4C80VA-E1 (a) | MXZ-4C80VA-E1 (a) | Type C | CN605 | Multi-Split |
| 2015 | M-Serie | MXZ-4C80VA-E1 (b) | MXZ-4C80VA-E1 (b) | Type C | CN605 | Multi-Split |
| 2015 | M-Serie | MXZ-4D72VA-E1 | MXZ-4D72VA-E1 | Type C | CN861 | Multi-Split |
| 2015 | M-Serie | MXZ-4D72VA-E2 | MXZ-4D72VA-E2 | Type C | CN861 | Multi-Split |
| 2015 | M-Serie | MXZ-4D72VA-E3 | MXZ-4D72VA-E3 | Type C | CN861 | Multi-Split |
| 2015 | M-Serie | MXZ-4D72VA-ER2 | MXZ-4D72VA-ER2 | Type C | CN861 | Multi-Split |
| 2015 | M-Serie | MXZ-4D72VA-ER3 | MXZ-4D72VA-ER3 | Type C | CN861 | Multi-Split |
| 2015 | M-Serie | MXZ-4D72VA-ET2 | MXZ-4D72VA-ET2 | Type C | CN861 | Multi-Split |
| 2015 | M-Serie | MXZ-4D72VA-ET3 | MXZ-4D72VA-ET3 | Type C | CN861 | Multi-Split |
| 2015 | M-Serie | MXZ-4D83VA-E1 | MXZ-4D83VA-E1 | Type C | CN605 | Multi-Split |
| 2015 | M-Serie | MXZ-4D83VA-E2 | MXZ-4D83VA-E2 | Type C | CN605 | Multi-Split |

| Jahr | Gerätefamilie | Geräteserie | Gerätmodell | Relaiskabel | Anschluss | Anschlussmöglichkeit |
|------|---------------|--------------------|--------------------|-------------|-----------|----------------------|
| 2015 | M-Serie | MXZ-4D83VA-ER2 | MXZ-4D83VA-ER2 | Type C | CN605 | Multi-Split |
| 2015 | M-Serie | MXZ-4D83VA-ET2 | MXZ-4D83VA-ET2 | Type C | CN605 | Multi-Split |
| 2015 | M-Serie | MXZ-4E72VA-E1 | MXZ-4E72VA-E1 | Type C | CN861 | Multi-Split |
| 2015 | M-Serie | MXZ-4E72VA-ER1 | MXZ-4E72VA-ER1 | Type C | CN861 | Multi-Split |
| 2015 | M-Serie | MXZ-4E72VA-ET1 | MXZ-4E72VA-ET1 | Type C | CN861 | Multi-Split |
| 2015 | M-Serie | MXZ-4E83VA-E1 | MXZ-4E83VA-E1 | Type C | CN861 | Multi-Split |
| 2015 | M-Serie | MXZ-4E83VA-E2 | MXZ-4E83VA-E2 | Type C | CN861 | Multi-Split |
| 2015 | M-Serie | MXZ-4E83VA-ER1 | MXZ-4E83VA-ER1 | Type C | CN861 | Multi-Split |
| 2015 | M-Serie | MXZ-4E83VA-ET1 | MXZ-4E83VA-ET1 | Type C | CN861 | Multi-Split |
| 2015 | M-Serie | MXZ-4E83VA-ET2 | MXZ-4E83VA-ET2 | Type C | CN861 | Multi-Split |
| 2015 | M-Serie | MXZ-4E83VAHZ-E1 | MXZ-4E83VAHZ-E1 | Type C | CN861 | Multi-Split |
| 2015 | M-Serie | MXZ-4E83VAHZ-ER1 | MXZ-4E83VAHZ-ER1 | Type C | CN861 | Multi-Split |
| 2015 | M-Serie | MXZ-5B100VA-E1 | MXZ-5B100VA-E1 | Type AD | CN605 | Multi-Split |
| 2015 | M-Serie | MXZ-5C100VA2-E1 | MXZ-5C100VA2-E1 | Type C | CN605 | Multi-Split |
| 2015 | M-Serie | MXZ-5C100VA-E1 (a) | MXZ-5C100VA-E1 (a) | Type C | CN605 | Multi-Split |
| 2015 | M-Serie | MXZ-5C100VA-E1 (b) | MXZ-5C100VA-E1 (b) | Type C | CN605 | Multi-Split |
| 2015 | M-Serie | MXZ-5D102VA-E1 | MXZ-5D102VA-E1 | Type C | CN605 | Multi-Split |
| 2015 | M-Serie | MXZ-5D102VA-E2 | MXZ-5D102VA-E2 | Type C | CN605 | Multi-Split |
| 2015 | M-Serie | MXZ-5D102VA-ER2 | MXZ-5D102VA-ER2 | Type C | CN605 | Multi-Split |
| 2015 | M-Serie | MXZ-5D102VA-ET2 | MXZ-5D102VA-ET2 | Type C | CN605 | Multi-Split |
| 2015 | M-Serie | MXZ-5E102VA-E1 | MXZ-5E102VA-E1 | Type C | CN861 | Multi-Split |
| 2015 | M-Serie | MXZ-5E102VA-E2 | MXZ-5E102VA-E2 | Type C | CN861 | Multi-Split |
| 2015 | M-Serie | MXZ-5E102VA-ER1 | MXZ-5E102VA-ER1 | Type C | CN861 | Multi-Split |
| 2015 | M-Serie | MXZ-5E102VA-ET1 | MXZ-5E102VA-ET1 | Type C | CN861 | Multi-Split |
| 2015 | M-Serie | MXZ-5E102VA-ET2 | MXZ-5E102VA-ET2 | Type C | CN861 | Multi-Split |
| 2015 | M-Serie | MXZ-6C120VA-E1 | MXZ-6C120VA-E1 | Type C | CN861 | Multi-Split |
| 2015 | M-Serie | MXZ-6C120VA-E2 | MXZ-6C120VA-E2 | Type C | CN861 | Multi-Split |
| 2015 | M-Serie | MXZ-6C122VA-E1 | MXZ-6C122VA-E1 | Type C | CN861 | Multi-Split |
| 2015 | M-Serie | MXZ-6C122VA-E2 | MXZ-6C122VA-E2 | Type C | CN861 | Multi-Split |
| 2015 | M-Serie | MXZ-6C122VA-ER1 | MXZ-6C122VA-ER1 | Type C | CN861 | Multi-Split |
| 2015 | M-Serie | MXZ-6C122VA-ER2 | MXZ-6C122VA-ER2 | Type C | CN861 | Multi-Split |
| 2015 | M-Serie | MXZ-6D122VA-E1 | MXZ-6D122VA-E1 | Type C | CN861 | Multi-Split |
| 2015 | M-Serie | MXZ-6D122VA-ER1 | MXZ-6D122VA-ER1 | Type C | CN861 | Multi-Split |
| 2015 | M-Serie | MXZ-6D122VA-ET1 | MXZ-6D122VA-ET1 | Type C | CN861 | Multi-Split |
| 2016 | M-Serie | MXZ-4E83VA-E3 | MXZ-4E83VA-E3 | Type C | CN861 | Multi-Split |
| 2016 | M-Serie | MXZ-4E83VA-ER2 | MXZ-4E83VA-ER2 | Type C | CN861 | Multi-Split |
| 2016 | M-Serie | MXZ-4E83VA-ET3 | MXZ-4E83VA-ET3 | Type C | CN861 | Multi-Split |
| 2016 | M-Serie | MXZ-4E83VAHZ-E2 | MXZ-4E83VAHZ-E2 | Type C | CN861 | Multi-Split |
| 2016 | M-Serie | MXZ-4E83VAHZ-ER2 | MXZ-4E83VAHZ-ER2 | Type C | CN861 | Multi-Split |
| 2016 | M-Serie | MXZ-5E102VA-E3 | MXZ-5E102VA-E3 | Type C | CN861 | Multi-Split |
| 2016 | M-Serie | MXZ-5E102VA-ER2 | MXZ-5E102VA-ER2 | Type C | CN861 | Multi-Split |
| 2016 | M-Serie | MXZ-5E102VA-ET3 | MXZ-5E102VA-ET3 | Type C | CN861 | Multi-Split |
| 2016 | M-Serie | MXZ-6D122VA-E2 | MXZ-6D122VA-E2 | Type C | CN861 | Multi-Split |
| 2016 | M-Serie | MXZ-6D122VA-ER2 | MXZ-6D122VA-ER2 | Type C | CN861 | Multi-Split |
| 2016 | M-Serie | MXZ-6D122VA-ET2 | MXZ-6D122VA-ET2 | Type C | CN861 | Multi-Split |
| 2017 | M-Serie | MXZ-2D33VA-E3 | MXZ-2D33VA-E3 | Type AD | CN606 | Multi-Split |
| 2017 | M-Serie | MXZ-2D33VA-ER3 | MXZ-2D33VA-ER3 | Type AD | CN606 | Multi-Split |
| 2017 | M-Serie | MXZ-2D33VA-ET3 | MXZ-2D33VA-ET3 | Type AD | CN606 | Multi-Split |
| 2017 | M-Serie | MXZ-4D83VA-ER1 | MXZ-4D83VA-ER1 | Type C | CN605 | Multi-Split |
| 2017 | M-Serie | MXZ-5D102VA-ER1 | MXZ-5D102VA-ER1 | Type C | CN605 | Multi-Split |
| 2017 | M-Serie | MXZ-6D122VA2-E1 | MXZ-6D122VA2-E1 | Type C | CN861 | Multi-Split |
| 2017 | M-Serie | MXZ-6D122VA2-ER1 | MXZ-6D122VA2-ER1 | Type C | CN861 | Multi-Split |
| 2017 | M-Serie | MXZ-6D122VA2-ET1 | MXZ-6D122VA2-ET1 | Type C | CN861 | Multi-Split |

Mitsubishi Electric ist für Sie vor Ort

Zentrale

Living Environment Systems
Mitsubishi-Electric-Platz 1
D-40882 Ratingen
Phone +49 2102 486-0
Fax +49 2102 486-1120

Bremen

PLZ 26-28, 49
Max-Pechstein-Straße 6
D-28816 Stuhr
Phone +49 40 55620347-0
Fax +49 40 55620347-99
les-bremen@meg.mee.com

Dortmund

PLZ 41, 44, 57-59
Mitsubishi-Electric-Platz 1
D-40882 Ratingen
Phone +49 2102 486-8521
Fax +49 2102 486-4664
les-dortmund@meg.mee.com

Kaiserslautern

PLZ 54, 66-69
Seligenstädter Grund 1
D-63150 Heusenstamm
Phone +49 6104 80243-0
Fax +49 6104 80243-29
les-kaiserslautern@meg.mee.com

München

PLZ 80-88
Rollnerstraße 12
D-90408 Nürnberg
Phone +49 711 327001-610
Fax +49 2102 486666-8620
les-muenchen@meg.mee.com

Key Account

PLZ 01-99
Mitsubishi-Electric-Platz 1
D-40882 Ratingen
Phone +49 2102 486-4176
Fax +49 2102 486-4664
les-keyaccount@meg.mee.com

Berlin

PLZ 10-18, 39
Hauptstraße 80
D-16348 Wandlitz (Schönwalde)
Phone +49 40 55620347-0
Fax +49 40 55620347-99
les-berlin@meg.mee.com

Köln

PLZ 42, 50-53
Mitsubishi-Electric-Platz 1
D-40882 Ratingen
Phone +49 2102 486-8521
Fax +49 2102 486-4664
les-koeln@meg.mee.com

Stuttgart

PLZ 70-74, 89
Schelmenwasenstraße 16-20
D-70567 Stuttgart
Phone +49 711 327001-610
Fax +49 711 327001-615
les-stuttgart@meg.mee.com

Hamburg

PLZ 19-25
Borsteler Bogen 27 D
D-22453 Hamburg
Phone +49 40 55620347-0
Fax +49 40 55620347-99
les-hamburg@meg.mee.com

Dresden

PLZ 01-09, 98-99
Asterweg 16
D-09648 Altmittweida
Phone +49 40 55620347-0
Fax +49 2102 486-8616
les-dresden@meg.mee.com

Frankfurt

PLZ 35, 36, 55, 56, 60-65
Seligenstädter Grund 1
D-63150 Heusenstamm
Phone +49 6104 80243-0
Fax +49 6104 80243-29
les-frankfurt@meg.mee.com

Baden-Baden

PLZ 75-79
Schelmenwasenstraße 16-20
D-70567 Stuttgart
Phone +49 711 327001-610
Fax +49 711 327001-615
les-badenbaden@meg.mee.com

Hannover

PLZ 29-31, 38
Borsteler Bogen 27 D
D-22453 Hamburg
Phone +49 40 55620347-0
Fax +49 40 55620347-99
les-hannover@meg.mee.com

Düsseldorf

PLZ 40, 45-48
Mitsubishi-Electric-Platz 1
D-40882 Ratingen
Phone +49 2102 486-8521
Fax +49 2102 486-4664
les-duesseldorf@meg.mee.com

Kassel

PLZ 32-34, 37
Mitsubishi-Electric-Platz 1
D-40882 Ratingen
Phone +49 2102 486-8521
Fax +49 2102 486-4664
les-kassel@meg.mee.com

Nürnberg

PLZ 90-97
Rollnerstraße 12
D-90408 Nürnberg
Phone +49 711 327001-610
Fax +49 2102 486666-8618
les-nuernberg@meg.mee.com

Unsere Klimaanlage und Wärmepumpen enthalten fluoridierte Treibhausgase R410A, R407C, R134a und R32.
Weitere Informationen finden Sie in der entsprechenden Bedienungsanleitung.

Alle Angaben und Abbildungen ohne Gewähr. Nicht alle Produkte sind in allen Ländern verfügbar.



Art.-Nr. DE-XXXXXX
Version 1/2019 / © Mitsubishi Electric Europe B.V.

