

# DLW LINOLEUM

MARMORETTE - ARABESQUE  
COLORETTE - UNI WALTON



Creative by Nature

---



**Gerflor**<sup>®</sup>  
theflooringgroup



# SUSTAINABLE BY NATURE

## HERGESTELLT AUS NATÜRLICHEN ROHSTOFFEN

MADE WITH NATURAL CONTENT / UN PRODUIT NATUREL

✓ 98% **naturbasiert**  
*natural*  
*naturel*

✓ 76% **schnell nachwachsend**  
*rapidly renewable*  
*renouvelable rapidement*

Bis zu / Up to / Jusqu'à  
 ✓ 40% **Recyclinganteil**  
*recycled content*  
*contenu recyclé*



## CRADLE TO CRADLE

ZERTIFIZIERT™ / CERTIFIED™ / CERTIFIÉ™ SILVER<sup>(1)</sup>

Entwickelt nach den Prinzipien der Kreislaufwirtschaft

Developed using circular economy principles

Développé selon les principes de l'économie circulaire



(1) Marmorette, Arabesque, Colorette, Uni Walton, Marmorette Acoustic, Lino Art

Cradle Certified™ is a registered trademark of the Cradle to Cradle Products Innovation Institute.

## CO<sub>2</sub>-NEUTRAL<sup>(2)</sup>

CARBON NEUTRAL<sup>(2)</sup> / NEUTRALITÉ CARBONE<sup>(2)</sup>

Die durch ein unabhängiges Institut erstellte EPD weist in den ersten Phasen des Lebenszyklus eine absolute CO<sub>2</sub> Neutralität aus.

Third party certified EPD indicates carbon neutrality during the first stages of its life cycle.

L'EPD certifiée par un laboratoire indépendant, indique la neutralité carbone des premières étapes du cycle de vie.



(2) Cradle to Gate: Umfasst Rohstoffe und Herstellungsprozess (Module A1-A3 der EPD)

From Cradle to Gate: includes raw materials and manufacturing process (A1-A3 stages of EPD)

«Cradle to Gate»: inclut les matières premières et le processus de fabrication (Étapes A1-A3 / EPD)

Source: Environmental Performance Declaration (EPD). Certified by Enea. More information on gerflor.com

## ECO LABELS

QUALITÄT  
QUALITY  
QUALITÉ

LEBENSZYKLUSANALYSE  
LIFE CYCLE ANALYSIS  
ANALYSE CYCLE DE VIE

QUALITÄT DER RAUMLUFT  
INDOOR AIR QUALITY  
QUALITÉ DE L'AIR

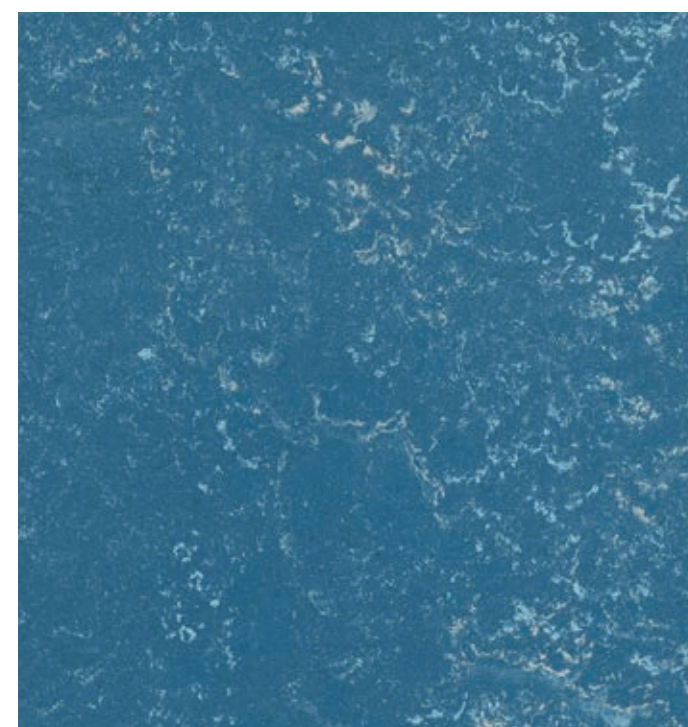


www.blauer-engel.de/11120

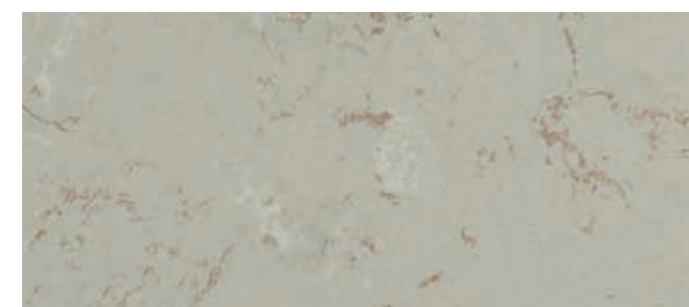
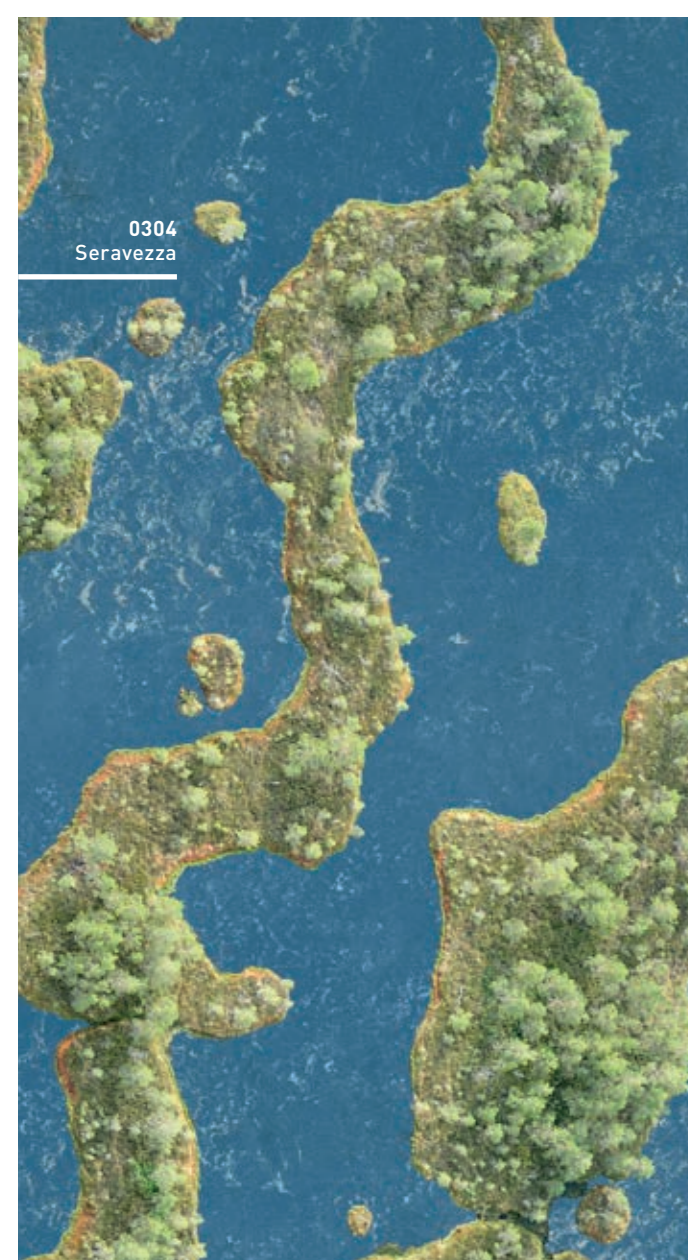
certified by SCS Global Services



# ARABESQUE



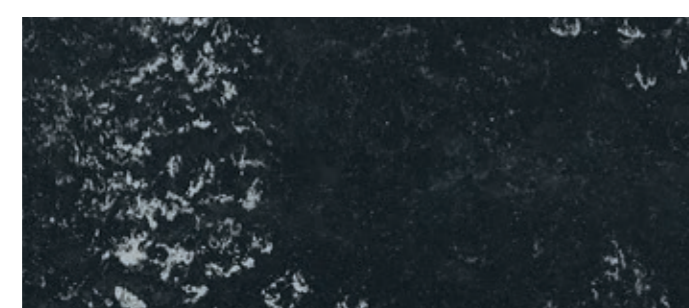
**0304 Seravezza**  
NCS: 5030-R90B / LRV: 13,6



**0302 Antico**  
NCS: 2502-Y / LRV: 47,8



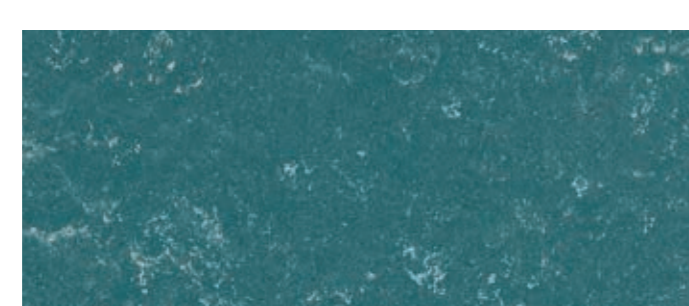
**0305 Monarca**  
NCS: 4005-G50Y / LRV: 33,5



**0301 Alcino**  
NCS: 8502-B / LRV: 5,7



**0303 Verona**  
NCS: 2060-Y90R / LRV: 20,3

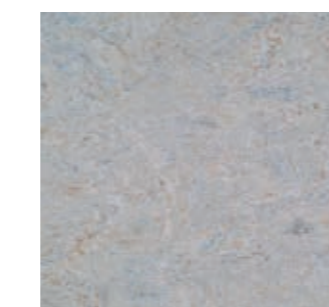


**0306 Prato**  
NCS: 5020-B30G / LRV: 16,0

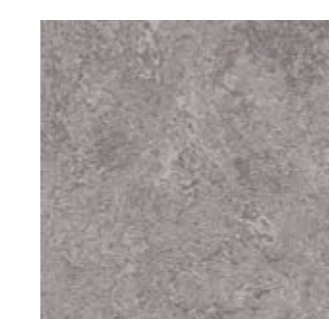
# MARMORETTE



**0155 Smoked Pearl**  
2,5 mm  
NCS: 2010-Y90R / LRV: 44,6



**0056 Foggy Blue**  
2,0 mm / 2,5 mm / 3,2 mm  
NCS: 4005-Y50R / LRV: 31,8



**0153 Greystone Grey**  
2,5 mm  
NCS: 4005-Y50R / LRV: 29,5



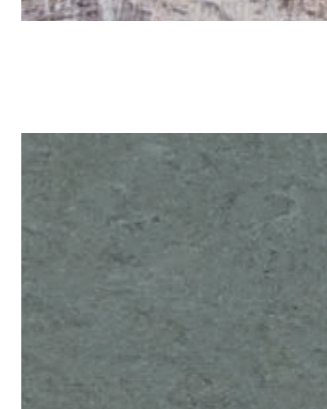
**0055 Ash Grey**  
2,0 mm / 2,5 mm / 3,2 mm  
NCS: 3502-B / LRV: 39,0



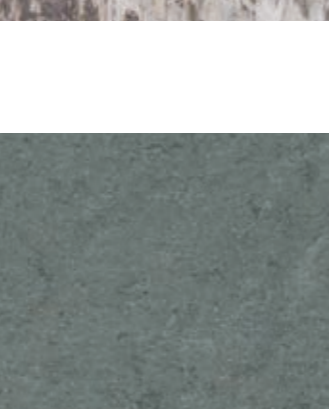
**0053 Ice Grey**  
2,0 mm / 2,5 mm / 3,2 mm  
NCS: 4000-N / LRV: 31,2



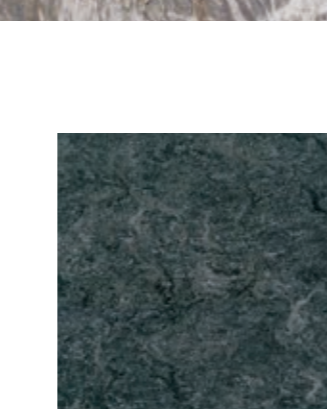
**0050 Quartz Grey**  
2,0 mm / 2,5 mm / 3,2 mm  
NCS: 5502-R / LRV: 20,7



**0054 Concrete Patty**  
2,5 mm  
NCS: 5500-N / LRV: 20,5

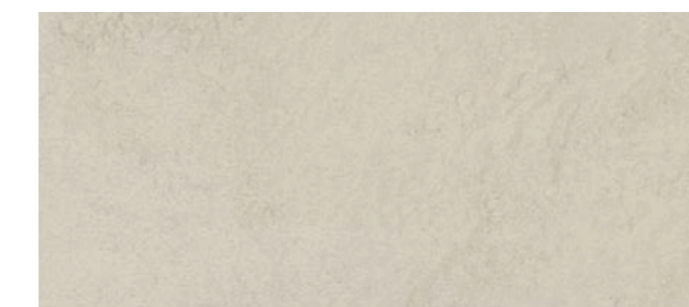


**0059 Plumb Grey**  
2,0 mm / 2,5 mm / 3,2 mm  
NCS: 7005-R50B / LRV: 11,3

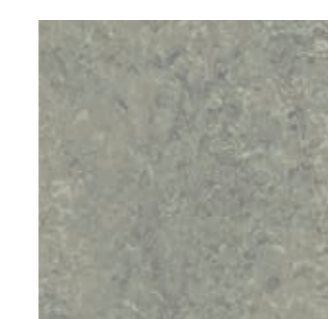


**0096 Midnight Grey**  
2,5 mm  
NCS: 8000-N / LRV: 7,3

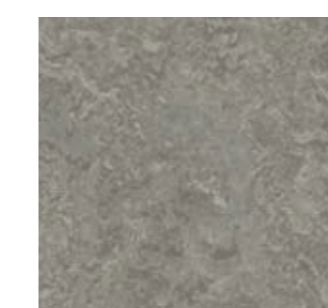
# MARMORETTE



**0252 Light Grey**  
2,5 mm  
NCS: 2005-Y20R / LRV: 49,8



**0254 Mineral Grey**  
2,5 mm  
NCS: 4005-Y20R / LRV: 34,3



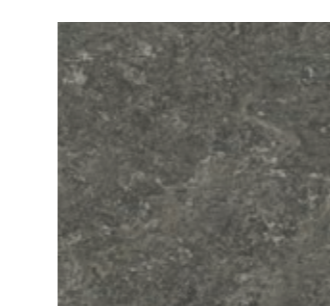
**0166 Clay**  
2,5 mm  
NCS: 4005-Y20R / LRV: 28,4



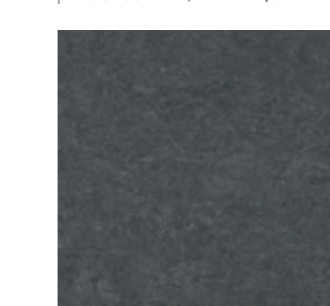
**0164 Milk Coffee**  
2,5 mm  
NCS: 5010-Y50R / LRV: 18,9



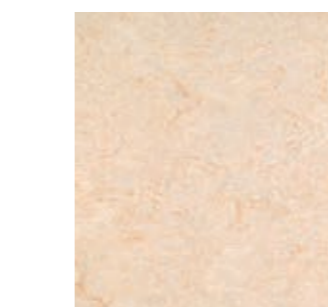
**0106 Hazelnut Shake**  
2,5 mm  
NCS: 4010-Y70R / LRV: 26,6



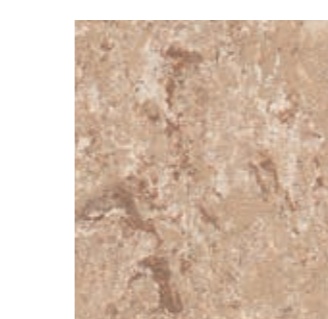
**0158 Tabac Grey**  
2,5 mm  
NCS: 6502-R / LRV: 14,8



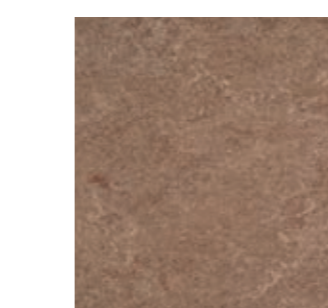
**0160 Industrial Grey**  
2,0 mm / 2,5 mm  
NCS: 7502-R / LRV: 10,3



**0045 Sand Beige**  
2,0 mm / 2,5 mm  
NCS: 2005-Y50R / LRV: 53,2



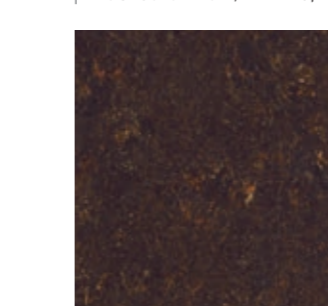
**0146 Beeswax Beige**  
2,5 mm  
NCS: 3010-Y30R / LRV: 41,0



**0003 Dark Brown**  
2,5 mm  
NCS: 5010-Y50R / LRV: 23,0



**0089 Peacan Pie**  
2,5 mm  
NCS: 6010-Y70R / LRV: 15,2

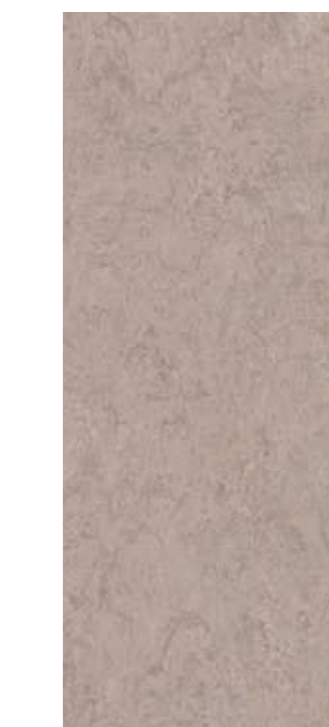


**0108 Mokka Brown**  
2,5 mm  
NCS: 8005-Y80R / LRV: 6,8

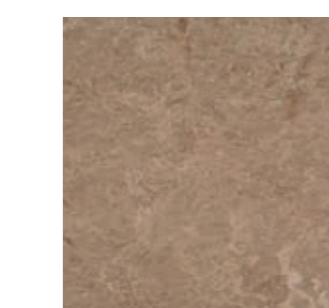
# MARMORETTE



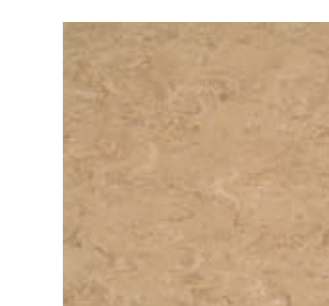
**0070 Rocky Brown**



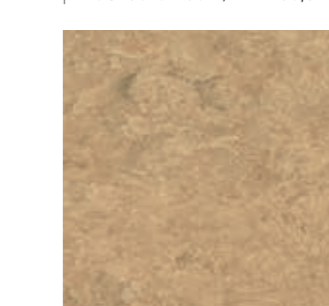
**0091 Shiitake Mushroom**  
2,5 mm  
NCS: 2010-Y80R / LRV: 41,6



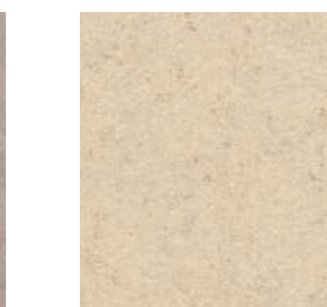
**0090 Soapstone**  
2,5 mm  
NCS: 4010-Y70R / LRV: 28,2



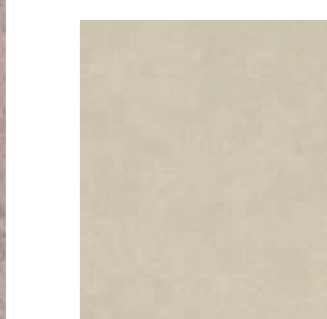
**0092 Beach**  
2,5 mm  
NCS: 3010-Y30R / LRV: 38,6



**0042 Shortcrust**  
2,5 mm  
NCS: 3020-Y30R / LRV: 31,3



**0145 Banana White**  
2,5 mm  
NCS: 1510-Y40R / LRV: 60,4



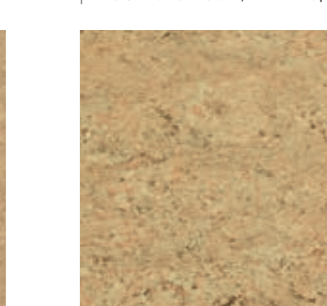
**0251 Cream**  
2,5 mm  
NCS: 2010-Y10R / LRV: 52,9



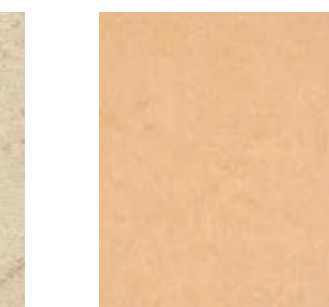
**0253 Pebble Grey**  
2,5 mm  
NCS: 3005-Y20R / LRV: 44,7



**0243 Marble Beige**  
2,5 mm  
NCS: 2020-Y30R / LRV: 48,8



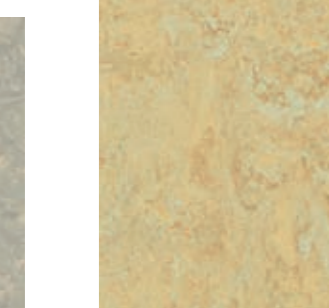
**0070 Rocky Brown**  
2,0 mm / 2,5 mm / 3,2 mm  
NCS: 2020-Y40R / LRV: 40,2



**0098 Desert Beige**  
2,0 mm / 2,5 mm  
NCS: 2020-Y40R / LRV: 49,9



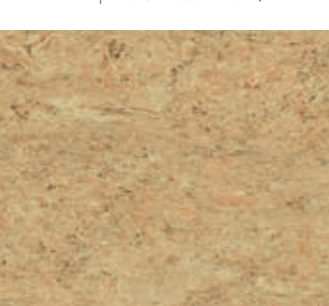
**0040 Light Sahara**  
2,0 mm / 2,5 mm  
NCS: 1515-Y30R / LRV: 52,7



**0076 Pale Yellow**  
2,5 mm  
NCS: 2030-Y10R / LRV: 49,6



**0076 Pale Yellow**  
2,5 mm  
NCS: 2030-Y10R / LRV: 49,6



**0076 Pale Yellow**  
2,5 mm  
NCS: 2030-Y10R / LRV: 49,6



# MARMORETTE



0018  
Lobster Red



0211 Pink  
2,5 mm  
NCS: 1030-R / LRV: 42,1



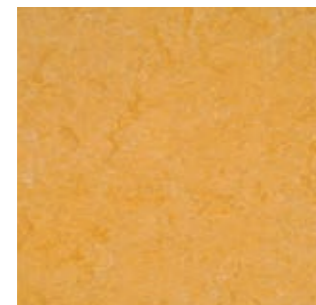
0075 Light Aurora  
2,5 mm  
NCS: 2030-Y60R / LRV: 40,2



0173 Melon Orange  
2,5 mm  
NCS: 2040-Y30R / LRV: 38,6



0073 Spicy Orange  
2,5 mm  
NCS: 3040-Y50R / LRV: 24,7



0072 Golden Yellow  
2,5 mm  
NCS: 2040-Y20R / LRV: 41,0



0119 Terracotta  
2,5 mm  
NCS: 3050-Y70R / LRV: 18,1



0018 Lobster Red  
2,5 mm  
NCS: 4040-R / LRV: 10,6



0172 Papaya Orange  
2,5 mm  
NCS: 2060-Y30R / LRV: 33,1



0117 Mandarin Orange  
2,5 mm  
NCS: 2070-Y70R / LRV: 18,8

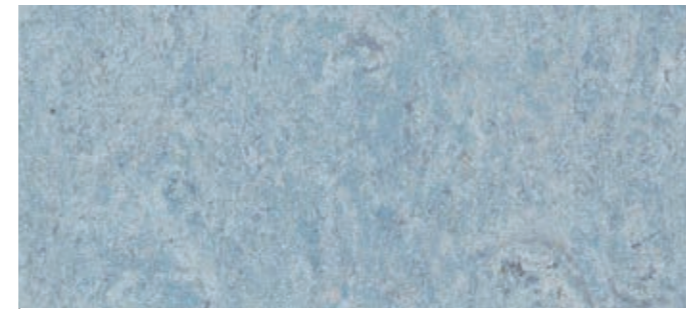


0019 Sunset Orange  
2,5 mm  
NCS: 3040-Y60R / LRV: 27,3

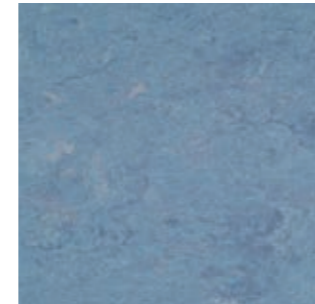


0118 Chili Red  
2,5 mm  
NCS: 2070-Y90R / LRV: 12,5

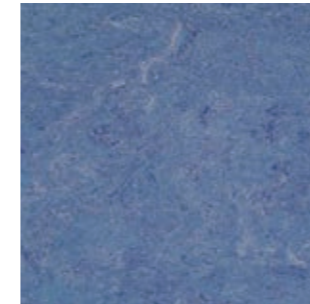
# MARMORETTE



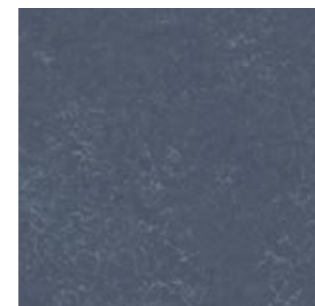
0121 Blue Eyes  
2,5 mm  
NCS: 3010-R80B / LRV: 39,0



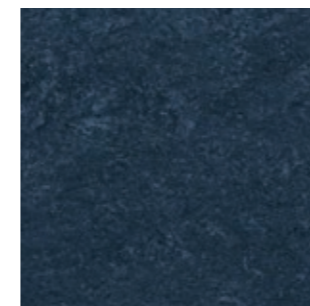
0023 Dusty Blue  
2,0 mm / 2,5 mm / 3,2 mm  
NCS: 4010-R90B / LRV: 30,0



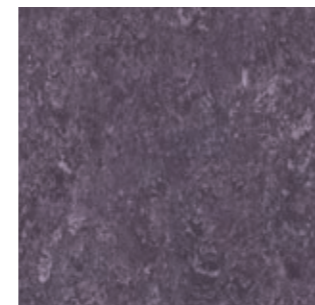
0049 Royal Blue  
2,5 mm / 3,2 mm  
NCS: 5020-R70B / LRV: 17,8



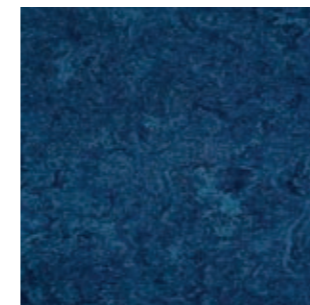
0224 Mystery Blue  
2,5 mm  
NCS: 6020-R90B / LRV: 13,0



0149 Dark Blue  
2,5 mm  
NCS: 8010-R70B / LRV: 7,2



0128 Violet  
2,5 mm  
NCS: 4030-R60B / LRV: 13,8



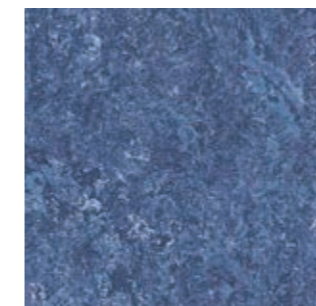
0028 Dive  
2,5 mm  
NCS: 6020-R80B / LRV: 9,4



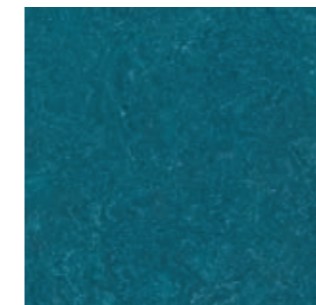
0122 Fluffy Blue  
2,5 mm  
NCS: 4030-B / LRV: 21,6



0022 Autumn Blue  
2,5 mm / 3,2 mm  
NCS: 5010-R90B / LRV: 20,6



0148 Ink Blue  
2,5 mm  
NCS: 6020-R70B / LRV: 10,8



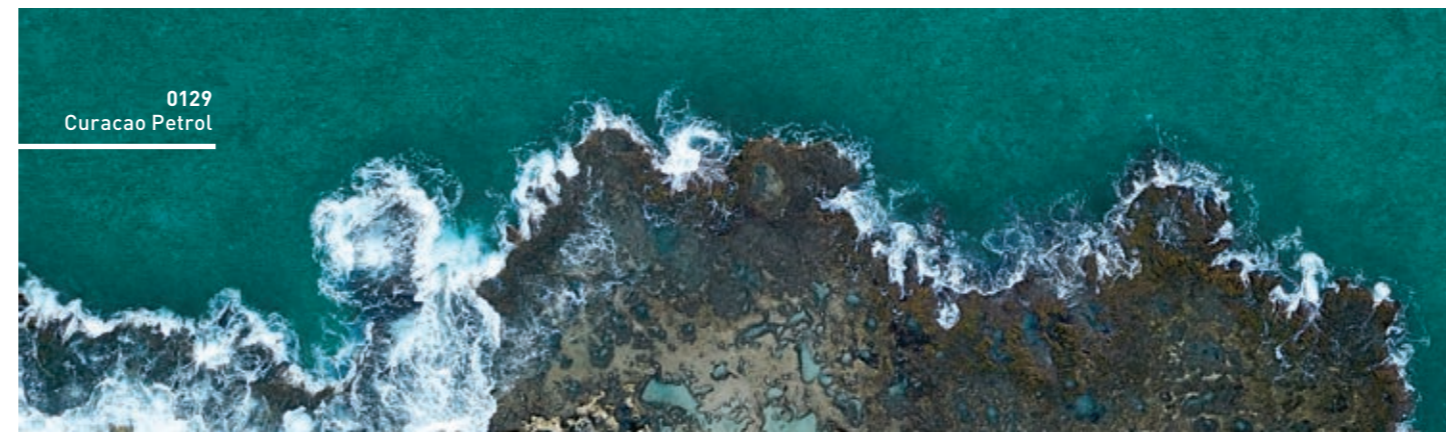
0136 Turquoise Bay  
2,5 mm  
NCS: 6030-B10G / LRV: 9,0



0026 Sky Blue  
2,5 mm  
NCS: 4030-R90B / LRV: 19,7

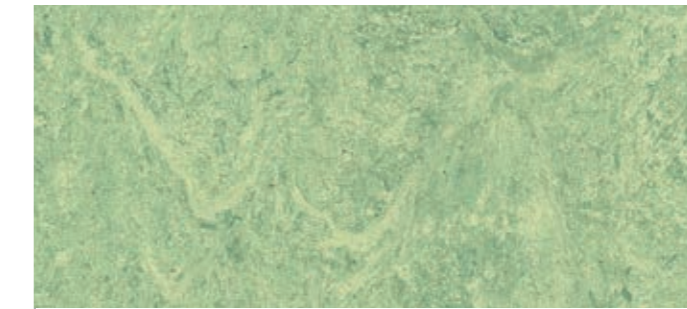


0129 Curacao Petrol  
2,5 mm  
NCS: 4040-B60G / LRV: 16,8



0129  
Curacao Petrol

# MARMORETTE



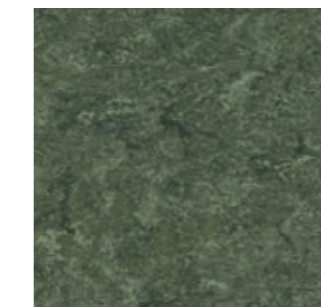
0130 Antique Green  
2,5 mm  
NCS: 2020-G50Y / LRV: 45,5



0099 Grey Turquoise  
2,5 mm  
NCS: 4010-B70G / LRV: 27,0



0132 Lime Green  
2,5 mm  
NCS: 2050-G60Y / LRV: 38,1



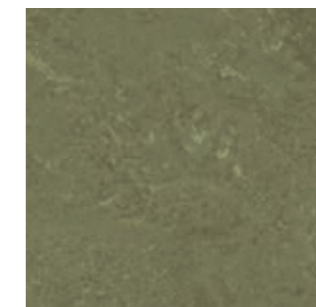
0083 Jungle  
2,5 mm  
NCS: 6010-G50Y / LRV: 14,9



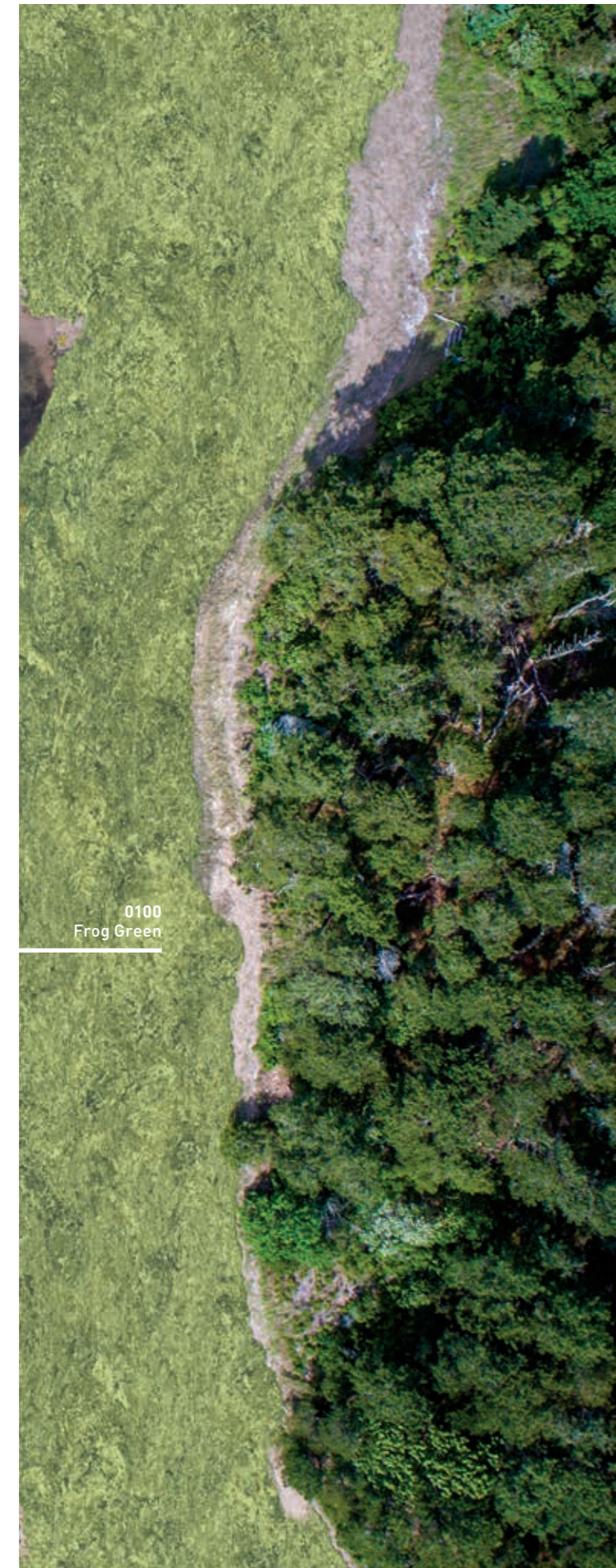
0043 Leaf Green  
2,5 mm  
NCS: 4010-G30Y / LRV: 31,6



0100 Frog Green  
2,5 mm  
NCS: 3030-G40Y / LRV: 31,4



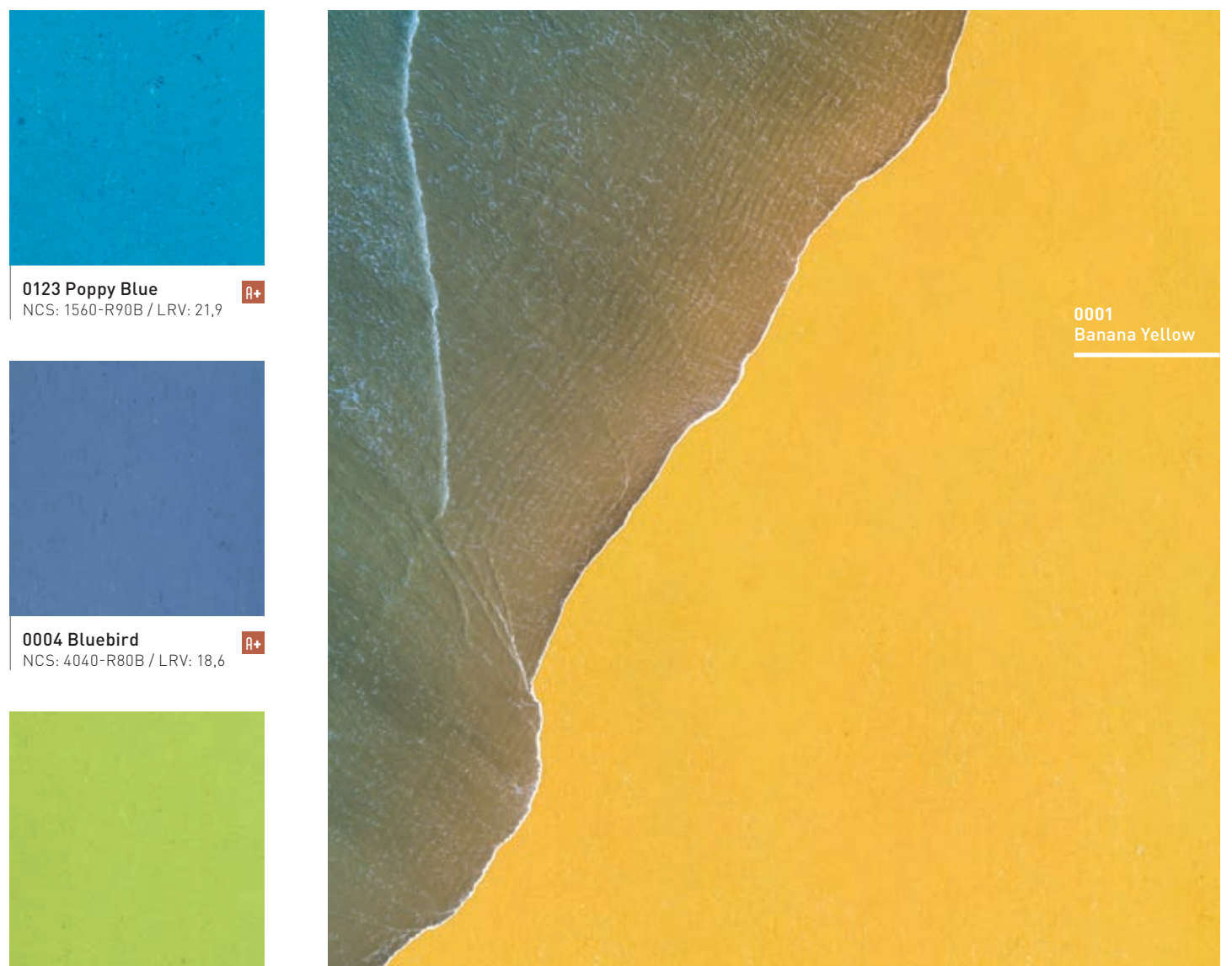
0138 Khaki  
2,5 mm  
NCS: 5020-G90Y / LRV: 19,9



0100  
Frog Green



# COLORETTE 2,5 mm



0123 Poppy Blue  
NCS: 1560-R90B / LRV: 21,9

0004 Bluebird  
NCS: 4040-R80B / LRV: 18,6

0132 Spicy Green  
NCS: 1060-G40Y / LRV: 44,1

0006 Vivid Green  
NCS: 3040-G20Y / LRV: 24,9

0080 Elephant Grey  
NCS: 6502-B / LRV: 13,5

0001 Banana Yellow

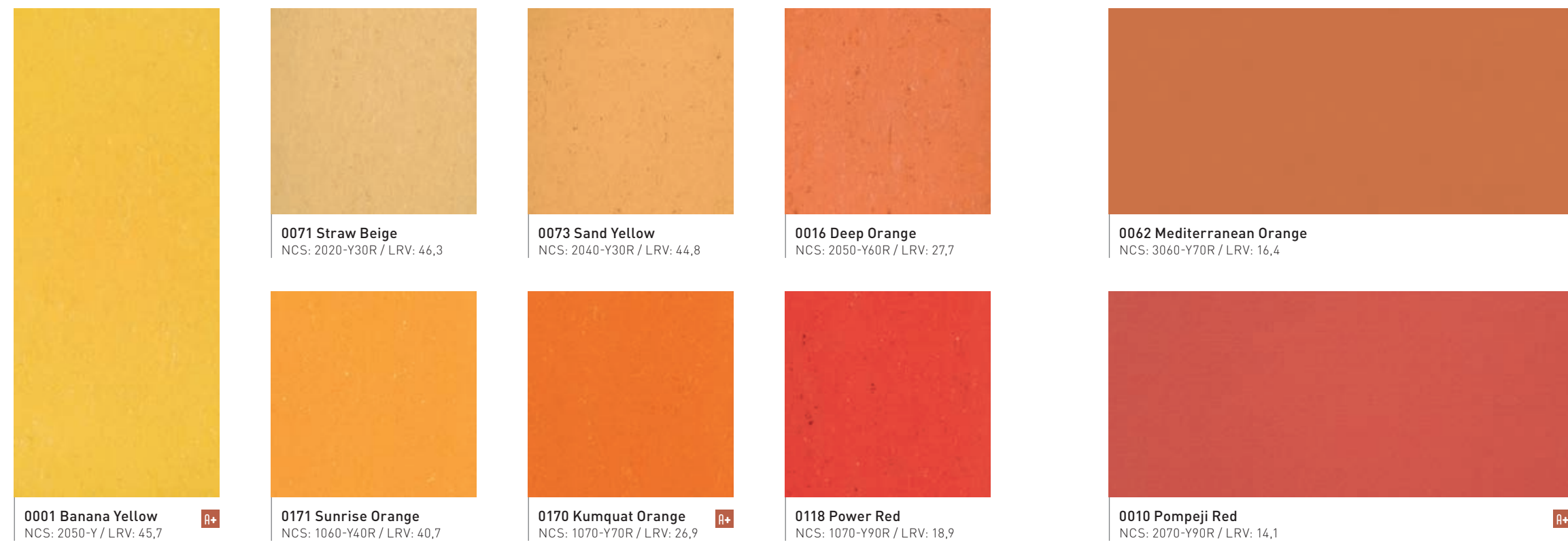
0058 Aluminium Grey  
NCS: 3502-R / LRV: 36,6

0052 Oxyd Grey  
NCS: 2502-Y / LRV: 47,0

0081 Private Black  
NCS: 8502-B / LRV: 7,3

0059 Stone Grey  
NCS: 5500-N / LRV: 22,2

# COLORETTE



0001 Banana Yellow  
NCS: 2050-Y / LRV: 45,7

0171 Sunrise Orange  
NCS: 1060-Y40R / LRV: 40,7

0170 Kumquat Orange  
NCS: 1070-Y70R / LRV: 26,9

0118 Power Red  
NCS: 1070-Y90R / LRV: 18,9

0110 Cadillac Pink  
NCS: 2050-R30B / LRV: 23,9

0012 Light Beige  
NCS: 3010-Y30R / LRV: 40,2

0043 Light Mud  
NCS: 5010-Y30R / LRV: 25,6

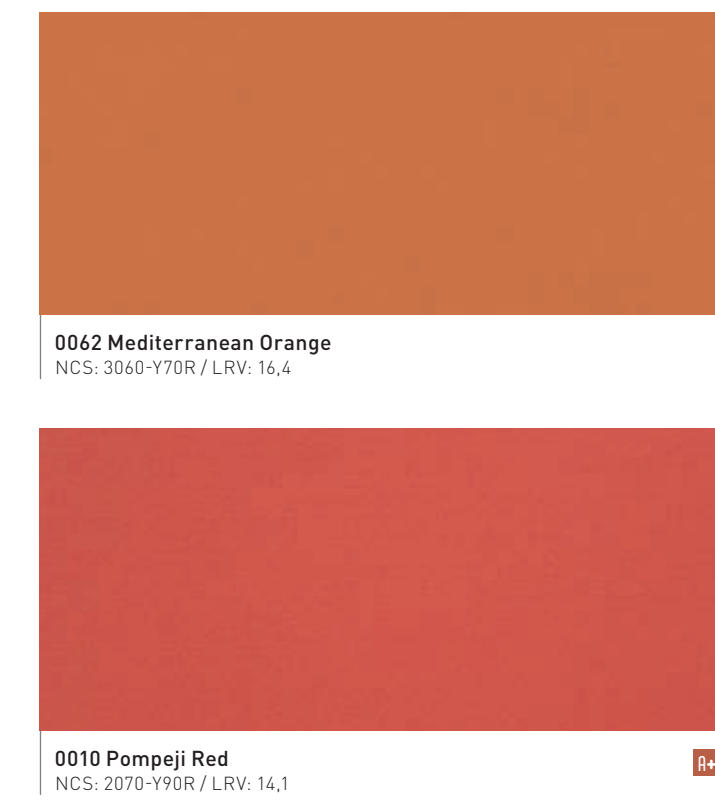
0071 Straw Beige  
NCS: 2020-Y30R / LRV: 46,3

0073 Sand Yellow  
NCS: 2040-Y30R / LRV: 44,8

0016 Deep Orange  
NCS: 2050-Y60R / LRV: 27,7

0073 Sand Yellow

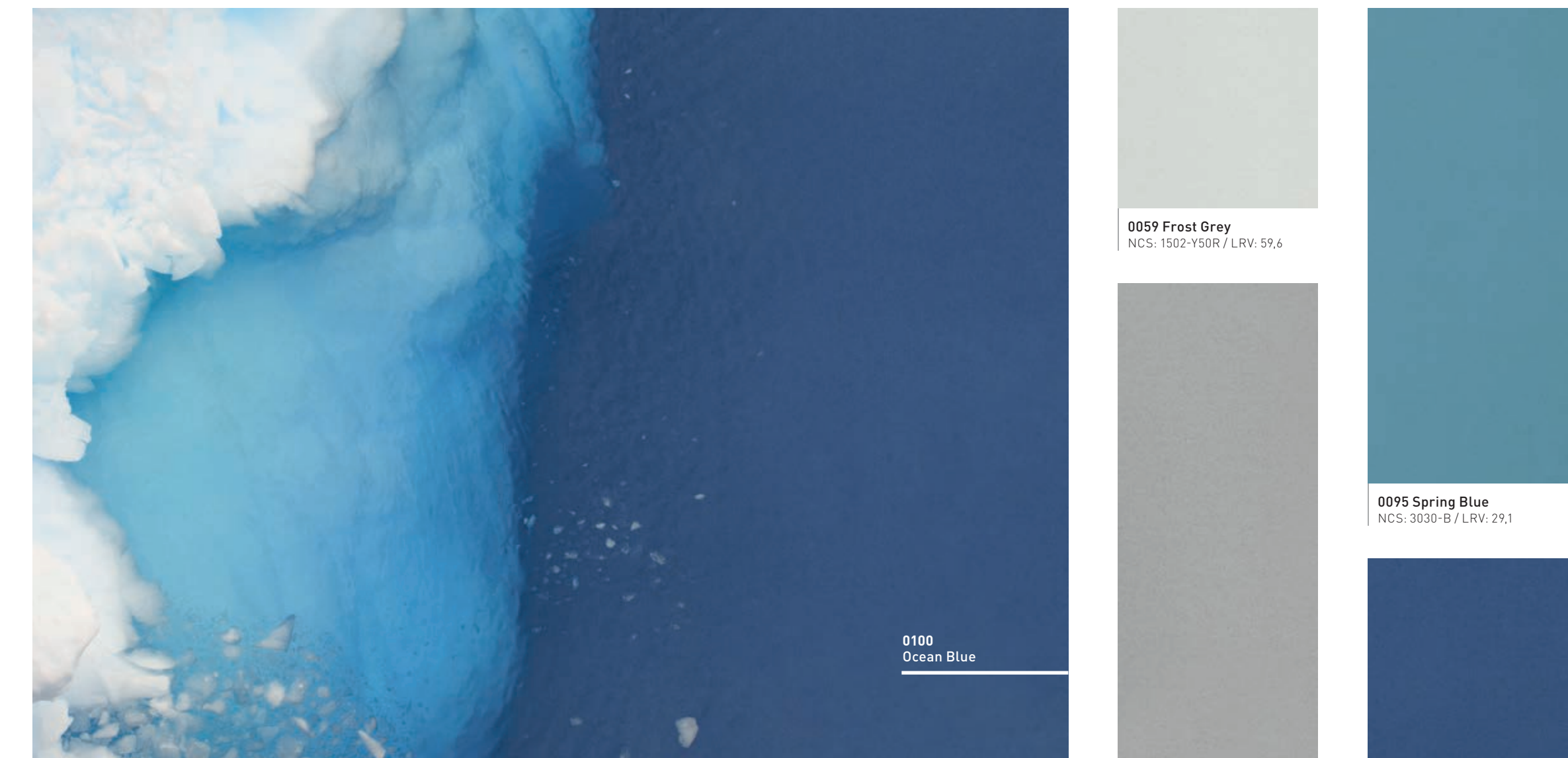
# UNI WALTON 2,5 mm



0062 Mediterranean Orange  
NCS: 3060-Y70R / LRV: 16,4

0010 Pompeji Red  
NCS: 2070-Y90R / LRV: 14,1

# UNI WALTON



0059 Frost Grey  
NCS: 1502-Y50R / LRV: 59,6

0095 Spring Blue  
NCS: 3030-B / LRV: 29,1

0100 Ocean Blue

0081 Nickel Grey  
NCS: 4502-R / LRV: 31,5

0100 Ocean Blue  
NCS: 5040-R80B / LRV: 8,8

0088 Chestnut  
NCS: 5040-Y80R / LRV: 9,1

0043 Neutral Beige  
NCS: 1515-Y30R / LRV: 51,1

0085 Warm Concrete Grey  
NCS: 4005-Y20R / LRV: 35,7

0090 Olive  
NCS: 5020-Y / LRV: 22,3

0082 Broken Grey  
NCS: 5502-R / LRV: 20,7

0060 Deep Brown  
NCS: 7020-Y60R / LRV: 9,2

0058 Clay Grey  
NCS: 6005-Y20R / LRV: 15,8

0035 Racing Green  
NCS: 8005-B80G / LRV: 7,6

0083 Architects Grey  
NCS: 7500-N / LRV: 10,9

0080 Black  
NCS: 8505-R80B / LRV: 4,8



# PROTECTIVE BY NATURE

**EXCLUSIVE**



**Neuer lösungsmittelfreier Oberflächenschutz, exklusiv für Linoleum entwickelt. Besonders strapazierfähig durch dreifache Vernetzung mittels Laser-UV-Technologie.**

*New solvent-free surface protection, developed exclusively for linoleum. Extremely hard-wearing due to triple laser UV cross-linking technology.*

*Nouvelle protection de surface sans solvant, exclusive pour le Linoleum. Traitement barrière obtenu par triple réticulation laser UV.*



## WOHNGESUND HEALTHY LIVING / ENVIRONNEMENT SAIN



### QUALITÄT DER RAUMLUFT

Sehr geringe Emissionen: TVOC nach 28 Tagen <10 Mikrogramm/m<sup>3</sup>



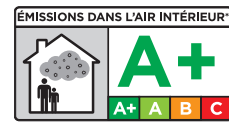
### AIR QUALITY

Very low emissions: TVOC after 28 days <10 microgram/m<sup>3</sup>



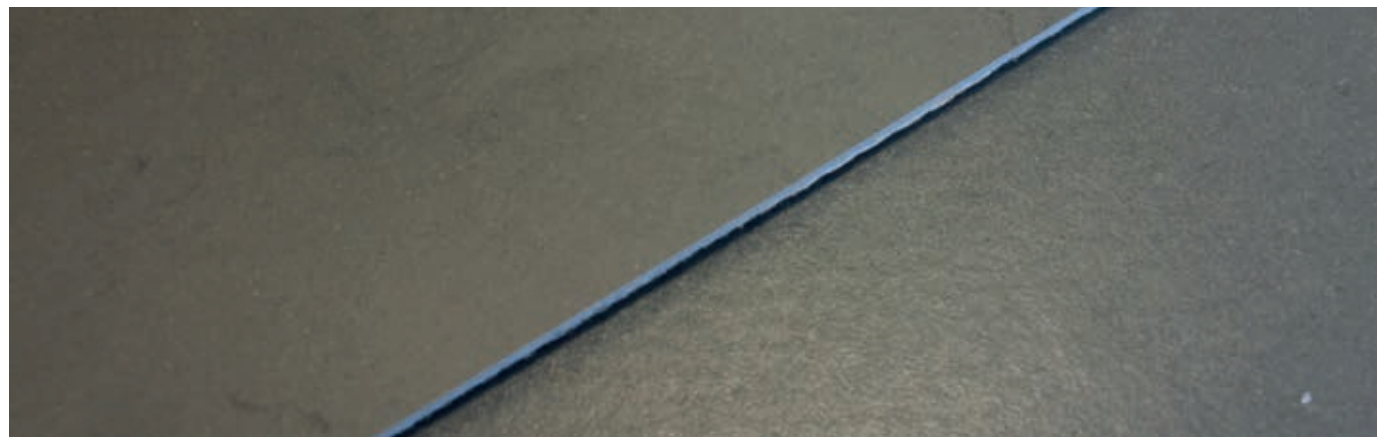
### QUALITÉ DE L'AIR

Très faibles émissions: TCOV après 28 jours <10 microgramme/m<sup>3</sup>



## NATÜRLICHES DESIGN NATURAL DESIGN / DÉCOR NATUREL

### MATTEFFEKT - MAT EFFECT - EFFET MAT



LPX / PUR / Others...



## EINFACHE REINIGUNG EASY TO MAINTAIN / FACILE D'ENTRETIEN



Standard Linoleum



NEOCARE™

### BARRIERE GEGEN SCHMUTZ UND FLECKEN

Einfache Reinigung mit einem Mopp.

### DIRT & STAIN BARRIER

Easy cleaning with a mop or any modern cleaning equipment.

### BARRIÈRE CONTRE LA SALETÉ & LES TACHES

Nettoyage facile avec une serpillère.



## HYGIENISCHE SAUBERKEIT HYGIENE / HYGIÈNE

Ausgezeichnete Beständigkeit gegenüber Desinfektionsmitteln und Chemikalien.

Antivirale und antibakterielle Aktivität. Senkt die mikrobielle Keimbelastung (Bakterien, Viren, ...) und damit das Risiko einer Kontaminationskette.

Excellent resistance against disinfection chemicals.

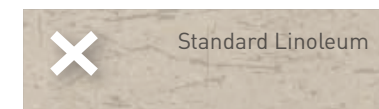
Anti-viral and anti-bacterial activity. Contribute to lower the microbes load (bacteria, virus, ...) and to minimize the risk of contamination chain.

Excellente résistance contre les produits désinfectants et les agents chimiques.

Activité antivirale et anti bactérienne. Contribue à réduire la charge microbienne (bactéries, virus, ...) et à minimiser les risques de chaîne de contamination.



## LANGLEBIG DURABLE



Standard Linoleum



NEOCARE™

### BESTÄNDIG GEGEN MIKROVERKRATZUNGEN

Einpfelegfrei und besonders strapazierfähig. Höhere Kratzfestigkeit.

### LEICHT ZU REPARIEREN

Partielle oder vollflächige Ausbesserung mit Spray-Cleaner und Einscheibenmaschine (Rotes Pad).

### MICRO SCRATCH RESISTANT

No sealing and waxing. Higher scratch resistance.

### EASY TO REPAIR

Local spray buffing with single-disk machine (Red disk).

### RÉSISTANT AUX MICRO RAYURES

Pas de métallisation. Plus résistant à la rayure.

### FACILITÉ DE RÉPARATION

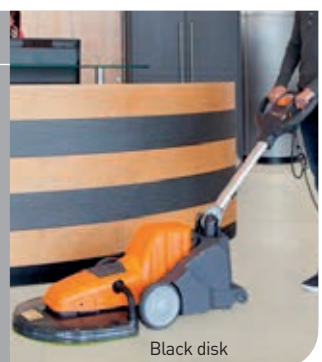
Polissage local par méthode spray avec une monobrosse (Disque rouge).

## EINPFLEGE / WAXING / METALLISATION

NEOCARE™ ist ein Hochleistungsschutz gegen Schmutz, Flecken und Kratzer. Eine Einpflege ist nicht notwendig. Bei Bedarf kann aber eine zusätzliche Einpflege vorgenommen werden.

NEOCARE™ is a high performing surface treatment protecting against dirt, stains and scratches and does not require any sealing & waxing throughout the life of the product. Waxing remains an option.

NEOCARE™ est une protection haute performance contre la saleté, les taches et les rayures qui ne requiert aucune action de métallisation durant toute la vie du produit. Si toutefois vous le souhaitez, vous pouvez métalliser.



Black disk



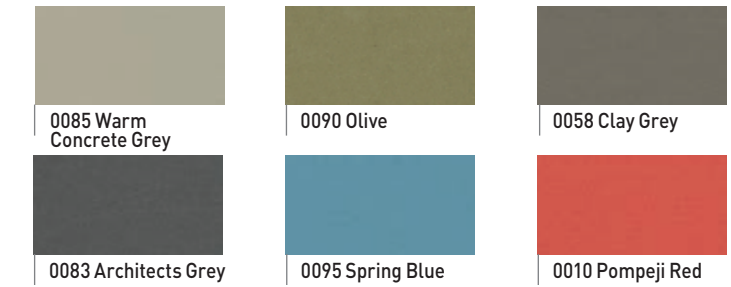


# ACOUSTIC 4mm

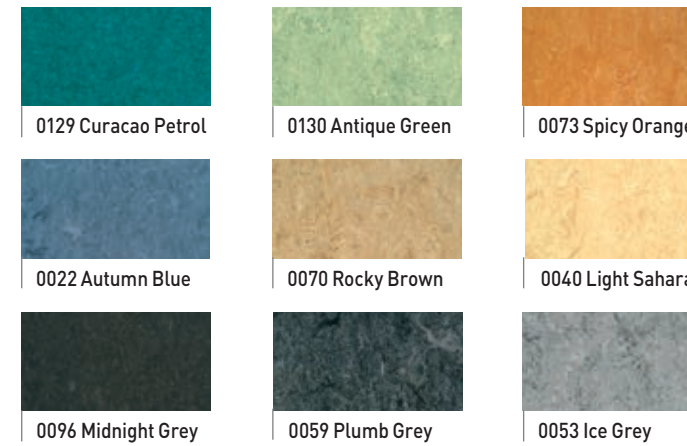
Marmorette Acoustic A 15dB in stock



Uni Walton AcousticPlus A+ 19dB in stock



Marmorette AcousticPlus A+ 19dB in stock



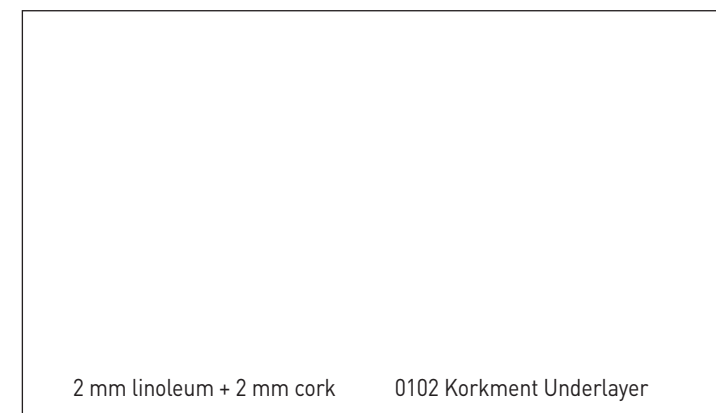
Colorette AcousticPlus A+ 19dB in stock



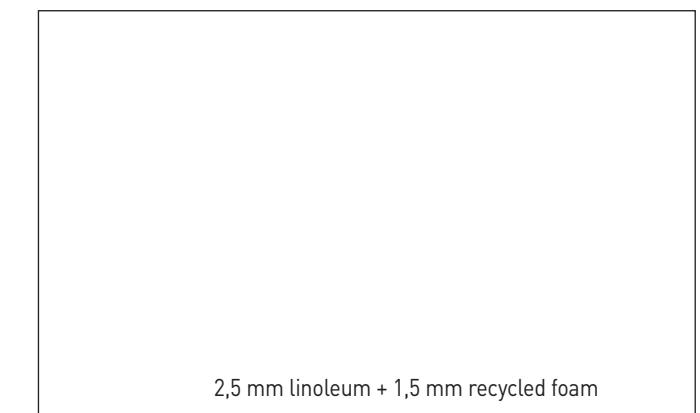
## Marmorette, Arabesque, Colorette, Uni Walton

Alle weiteren Farben können als Acoustic 15 dB Version hergestellt werden. Mindestbestellmenge: 1500 m<sup>2</sup>, unter 1500 m<sup>2</sup> verwenden Sie die Korkment-Unterlage.  
*All colours can be manufactured in Acoustic 15 dB version. Special request - Minimum order quantity: 1500 sqm. Below 1500 sqm, use Korkment underlayer.*  
 Version Acoustic 15 dB disponible pour tous les coloris. Demande spéciale - Minimum 1500 m<sup>2</sup>. En dessous de 1500 m<sup>2</sup>, utiliser la sous-couche Korkment.  
 Alle weiteren Farben können als AcousticPlus 19 dB Version hergestellt werden. Mindestbestellmenge: 58 m<sup>2</sup>  
*All colours can be manufactured in AcousticPlus 19 dB version. Special request - Minimum order quantity: 58 sqm*  
 Version AcousticPlus 19 dB disponible pour tous les coloris. Demande spéciale - Minimum 58 m<sup>2</sup>

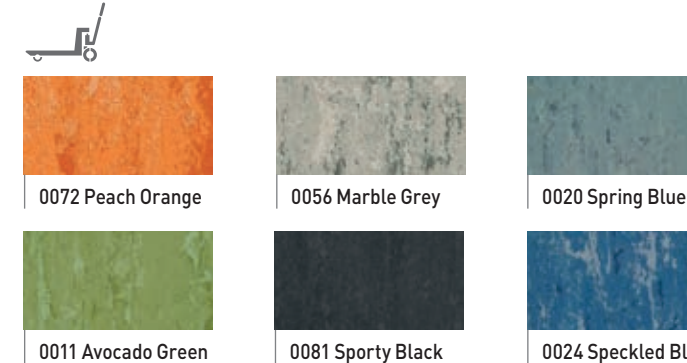
Acoustic 15 dB A



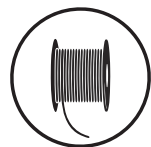
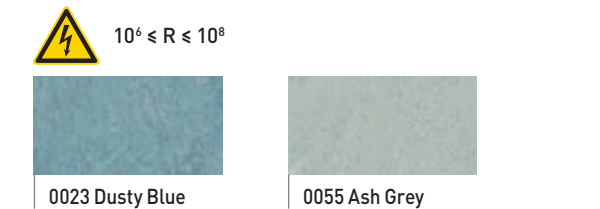
Acoustic Plus 19 dB A+



## LINODUR 4mm



## MARMORETTE LCH 2,5mm



www.gerflor.com

### CAMOUFLAGE



**Marmorette, Arabesque & Linodur**

Camouflage Schmelzdraht: nahezu unsichtbare Verbindung der Bahnen

*Camouflage welding rod: invisible joints.*

Cordon de soudure Camouflage: joints invisibles.

### UNI



**Colorette & Uni Walton**

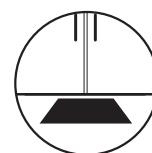
Uni Schmelzdraht: perfekte Abstimmung auf den Grundton des Bodenbelags

*Uni welding rod: a large palette of colours.*

Cordon de soudure Uni: large palette de couleurs.



Handläufe  
*Handrails*  
Mains courantes



Eingangsmatten  
*Entrance mats*  
Tapis d'entrée








Wandschutz  
*Wall Coverings & Protections*  
Protection murale



Sockelleisten & Profile  
*Skirtings & Profiles*  
Plinthes et profilés

# TECHNICAL DATA

			MARMORETTE			ARABESQUE / COLORETTE / UNI WALTON	MARMORETTE ACOUSTIC	MARMORETTE ACOUSTIC PLUS / COLORETTE ACOUSTIC PLUS / UNI WALTON ACOUSTIC PLUS	LINODUR	MARMORETTE LCH
KONSTRUKTION / DESCRIPTION / STRUCTURE			R10	Bfl-s1						
Gesamtdicke / Total thickness / Epaisseur totale	EN ISO 24346	mm	2,0 / 2,5 / 3,2	2,5	2,5	2,5	4,0	4,0	4,0	2,5
Unterschicht / Backing / Envers	-	-	Jutegewebe / Jute fabric / Toile de jute		Jutegewebe / Jute fabric / Toile de jute	Kork- und Juterücken / Cork and jute fabric backing / Envers liège et toile de jute	Schaumrücken / Foam backing / Envers mousse	Jutegewebe / Jute fabric / Toile de jute	Jutegewebe / Jute fabric / Toile de jute	
Dicke der Unterschicht / Thickness of cork/foam backing / Epaisseur sous-couche	EN ISO 24340	-	-		-	2	1,5	-	-	
Gesamtgewicht / Weight / Poids	EN ISO 23997	g/sqm	2400 / 2900 / 3800	2900	2900	3900	3500	4700	3000	
Rollenbreite / Width of sheet / Largeur des lés	EN ISO 24341	cm	200		200	200	200*	200	200	
Rollenlänge / Length of sheet / Longueur des lés	EN ISO 24341	m	20-31		20-31	20-31	20-31*	20 - 31	20 - 31	
KLASSIFIZIERUNG / CLASSIFICATION / CLASSIFICATION										
Norm/Produktbeschreibung / Norm/Product specification / Norme/Spécification produit	-	-	EN ISO 24011		EN ISO 24011	EN 687	EN 686	EN ISO 24011	EN ISO 24011	
Europäisches Klassifizierung / European classification / Classement européen	EN ISO 10874	class	23 / 34 / 43		23 / 34 / 43	23 / 33 / 41	23 / 33 / 41	23 / 34 / 43	23 / 34 / 43	
Classement UPEC	-	-	U4P3E1/2C2		U4P3E1/2C2	-	-	-	-	
Avis Technique	-	-	12-12-1617_V1		12-12-1617_V1	-	-	-	-	
Brandverhalten / Fire rating / Réaction au feu**	EN 13501-1	class	Cfl-s1		Bfl-s1	Cfl-s1	Cfl-s1	Cfl-s1	Cfl-s1	
Rutschsicherheit / Slip resistance / Glissance	ASR A1.5 / DIN 51130 – BGR 181	class	R9	R10	R9	R9	R9	R9	R9	
Rutschhemmung Barfußbereich / Barefoot slipping / Glissance pieds nus	DIN 51097	-	-		-	-	-	A	-	
Trittschallverbesserungsmass / Impact sound insulation / Réduction au bruit d'impact	EN ISO 717-2	dB	3 dB / 5 dB / 6 dB	5 dB	5 dB	5 dB	15 dB	19 dB	6 dB	3 dB
FUNKTION / PERFORMANCES / PERFORMANCES										
Resteindruck / Residual indentation / Poinçonnement statique rémanent	EN ISO 24343-1	mm	≤ 0,09 / ≤ 0,11	≤ 0,11	≤ 0,11	≤ 0,11	≤ 0,40	≤ 0,30	≤ 0,20	≤ 0,11
Farbechtheit / Colour fastness / Solidité lumière	EN ISO 105 - B02	Stufe / rating / classement	6		6	6	6	6	6	
Durchgangswiderstand / Vertical resistance / Résistance électrique transversale	EN 1081	Ohm	-		-	-	-	-	10 <sup>6</sup> ≤ R ≤ 10 <sup>9</sup>	
Standortisolation / Point contact resistance / Résistance de contact ponctuel	VDE 0100	kOhm	> 200		> 200	> 200	> 200	>200	>100	
Aufladungsspannung Begehtest / Static electrical propensity / Potentiel de charge	EN 1815	kV	≈ 2,0		≈ 2,0	≈ 2,0	≈ 2,0	≈ 2,0	≈ 2,0	
Stuhllöseleistung (typ W) / Castor chair test (Type W) / Essai de la chaise à roulettes (type W)	ISO 4918	-	Geeignet / OK / Approprié		Geeignet / OK / Approprié	Geeignet / OK / Approprié	Geeignet / OK / Approprié	Geeignet / OK / Approprié	Geeignet / OK / Approprié	
Biegsamkeit / Flexibility / Flexibilité	ISO 24344	mm	Ø 20 (2,5 mm)		Ø 20	Ø 60	Ø 60	Ø 60	Ø 20	
Wärmedurchlasswiderstand / Thermal resistance / Résistance thermique	EN 12667	sqm,K/W	0,012 / 0,015 / 0,018	0,015	0,015	0,04	0,044	0,023	0,015	
Wärmeableitung / Thermal conductivity / Conductivité thermique	EN ISO 10456	W/(m.K)	0,17		0,17	0,17	0,0937	0,17	0,17	
Oberflächenvergütung / Surface treatment / Traitement de surface	-	-	Neocare™		Neocare™	Neocare™	Neocare™	LPX	LPX	
Chemikalienbeständigkeit / Chemical products resistance / Résistance aux produits chimiques	EN ISO 26987	-	OK		OK	OK	OK	OK	OK	
Antibakterielle Aktivität (E. coli – S. aureus – MRSA) nach 24 Std / Anti-bacterial activity (E. coli – S. aureus – MRSA) after 24 h / Activité antibactérienne (E. coli – S. aureus – MRSA) après 24 h ***	EN ISO 22196 / JIS Z 2801	-	>99,99% Wachstumshemmend >99,99% inhibits growth >99,99% ne favorise pas la prolifération		>99,99% Wachstumshemmend >99,99% inhibits growth >99,99% ne favorise pas la prolifération	>99,99% Wachstumshemmend >99,99% inhibits growth >99,99% ne favorise pas la prolifération	>99,99% Wachstumshemmend >99,99% inhibits growth >99,99% ne favorise pas la prolifération	>99,99% Wachstumshemmend >99,99% inhibits growth >99,99% ne favorise pas la prolifération	>99,99% Wachstumshemmend >99,99% inhibits growth >99,99% ne favorise pas la prolifération	
Antivirale Aktivität (Humanes Coronavirus) nach 5 Std / Anti-viral activity (Human coronavirus) after 5 h / Activité antivirale (Coronavirus humain) après 5 h ***	ISO 21702	-	>98,65% Viruzide Aktivität >98,65% virucidal activity >98,65% activité virucide		>98,65% Viruzide Aktivität >98,65% virucidal activity >98,65% activité virucide	>98,65% Viruzide Aktivität >98,65% virucidal activity >98,65% activité virucide	>98,65% Viruzide Aktivität >98,65% virucidal activity >98,65% activité virucide	-	-	
QUALITÄT DER RAUMLUFT / INDOOR AIR QUALITY / QUALITE DE L'AIR INTERIEUR										
TVOC nach 28 Tagen / TVOC after 28 days / TCOV après 28 jours	EN 16516	microgram/m <sup>3</sup>	< 10		< 10	< 10	< 10	-	-	
KREISLAUFWIRTSCHAFT / CIRCULAR ECONOMY / ECONOMIE CIRCULAIRE										
Zertifizierung / Certification / Certification	Cradle to Cradle	-	Silver		-	Silver	Silver	Bronze	-	-
CE-KENNZEICHNUNG / CE MARKING / MARQUAGE CE										
	EN 14041 : 2004 AC : 2006	-	   							

\* Rollengröße für SRP Artikelcode / Dimension du rouleau pour SRP code de l'article / Roll dimension for SRP article code: R929/R930/R931/R932/R933/R934/R935: 1,96m x 18-29lm

\*\* Verklebt gemäß Zertifikat. DOP-Nummern erhalten Sie bei Ihrer lokalen Niederlassung. Glued according to certificate. DOP numbers available from your local branch. Encollage du revêtement suivant recommandation du certificat, voir www.gerflor.fr.

\*\*\* Die Umsetzung einer effektiven Reinigungsmethode ist der beste Schutz gegen Infektionen. The implementation of an effective cleaning method is the best defence against infection. Le respect des protocoles d'entretien des sols est la meilleure garantie contre les infections.



Je nach Lichteinwirkung kann sich die Produktfarbe durch den natürlichen Oxidationsprozess von Linoleum verändern. Wir empfehlen, die Muster mehrere Stunden dem direkten Sonnenlicht auszusetzen, um eine definitive Farbauswahl zu treffen. Dieser Vorgang ist reversibel.

Depending on light exposure, the product colour can vary, due to linoleum natural oxidization process. This process is reversible. We recommend that the samples be exposed to sunlight for several hours prior to making a final colour choice.

L'absence de lumière et l'oxydation de l'huile de lin, altèrent les coloris par un processus de jaunissement. Ce processus est réversible : exposé à la lumière pendant quelques jours ou semaines, le linoléum retrouve sa couleur d'origine.





## DLW Linoleum, Creative by Nature

**Wir bei Gerflor** glauben, dass Architektur die Kraft hat, das Leben der Menschen zu verbessern. Da die Natur unsere größte Inspirationsquelle ist, bietet DLW Linoleum speziell Architekten eine Kollektion von 159 Farben mit einem natürlichen Design, um die Kreativität und Nachhaltigkeit ihrer Projekte zu unterstützen. DLW Linoleum wird seit 1882 in Deutschland hergestellt und ist „Cradle to Cradle“ zertifiziert. Es besteht zu 98 % aus natürlichen Rohstoffen wie Leinöl, Holz, Kalkstein, Jute und Harz. Das ist unser Beitrag, Menschen mit der Natur in Einklang zu bringen.

***At Gerflor**, we believe that architecture has the power to improve people's lives. Nature is our greatest source of inspiration. With the DLW Linoleum offer, we can provide architects with a collection of 159 colours, these are natural designs, that can enhance the sustainability and the creativity of their projects. Made in Germany since 1882 and certified "Cradle to Cradle", the DLW Linoleum products are made of 98% natural raw materials including linseed oil, wood, limestone, jute and resin. It's simply our way of connecting people closer to nature.*

**Chez Gerflor**, nous croyons que l'architecture a le pouvoir d'améliorer nos vies. Parce que la nature est notre plus grande source d'inspiration, la collection Linoleum DLW offre aux architectes un ensemble de 159 coloris d'inspiration naturelle pour nourrir leur créativité et respecter l'environnement. Fabriqué en Allemagne depuis 1882 et certifié «Cradle to Cradle», le Linoleum DLW est composé à 98 % de matières naturelles, telles que huile de lin, poudre de bois, craie, jute ou résine. C'est notre façon de rapprocher les hommes de la nature.

## Mix and match COLLECTIONS

