



“my
Reference,”

CREATION 70

LOOSELAY

Gerflor[®]
theflooringgroup



CREATION 70

LOOSELAY



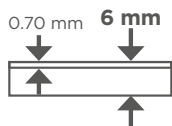
914 x 914 mm



600 x 600 mm



229 x 1220 mm



PUR+ MATT



Easy maintenance

4D DESIGN

MATT SURFACE



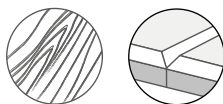
Natural look

CRISTAL WEAR LAYER



High definition design & color

STRUCTURED EMOSS & BEVEL



Ultra realistic surface

MIX&MATCH DESIGNS



Easy mix&match of designs & formats

DUO CORE TECHNOLOGY

1 RESILIENT COMFORT CORE

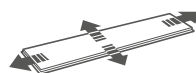


Noise absorption



Soft underfoot

2 RIGID CORE



The best stability / Fiber glass inside



Renovation ceramic 5 mm joint

GRIP-WAVE BACKLAYER

ANTI-SKID BACKING



Super strong suction to the subfloor

Air circulation: better acoustic

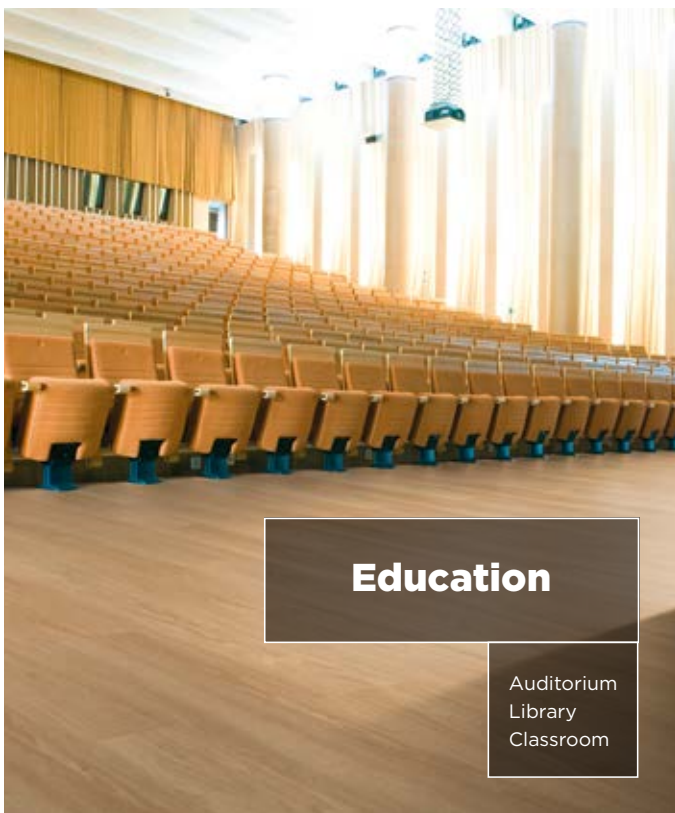
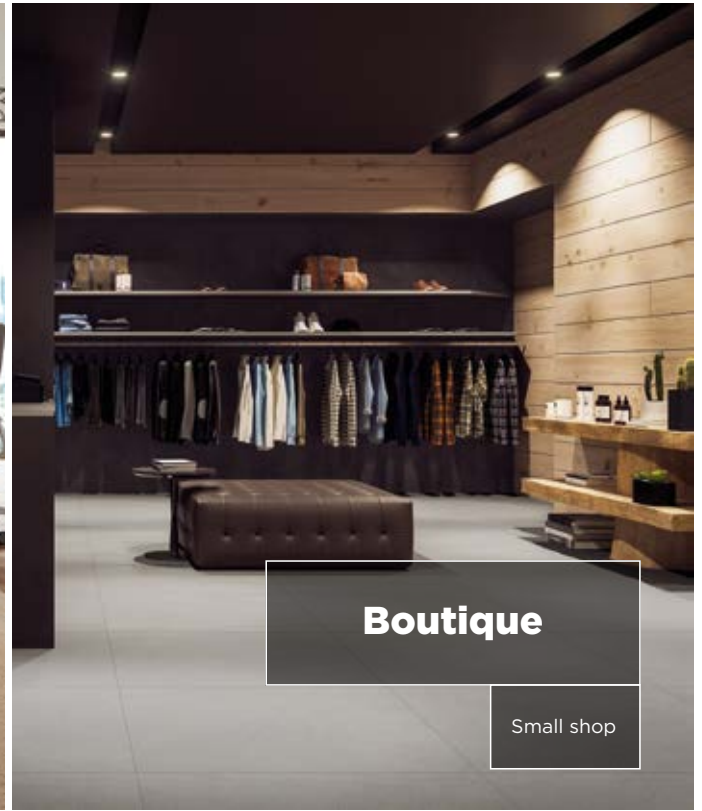
Humidity circulation: moisture resistance



Easily removable: renovation


CREATION 70


ONE SOLUTION FOR EVERY MARKET APPLICATION



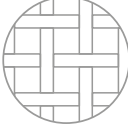
CREATION 70


3 CONSTRUCTIONS TO MATCH YOUR NEEDS

 **GLUE DOWN**
2.5 mm / 0.7 mm



Permanent adhesive installation



Ideal installation on new construction & heavy refurbishment



Mix & match



XL planks


70 DESIGN COLORS


 **CLIC - REVOLUTION**
6 mm / 0.7 mm



Free adhesive installation


Fast and easy renovation
Ceramic joint < 4 mm / 1 mm



Replacement one plank or tile



Watertight joint



Acoustic underlay

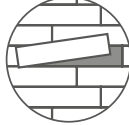

XL planks


36 DESIGN COLORS

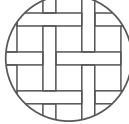
 **LOOSELAY**
6 mm / 0.7 mm



Removable installation using pressure sensitive adhesive


Fast and easy renovation
Ceramic joint < 5 mm / 2 mm


Replacement one plank or tile


Ideal installation on raised access floors


Mix & match


XL square tile

21 DESIGN COLORS

CREATION 70 LOOSELAY
WOOD UNIVERSE



1054 Onka Honey

229x1220 mm



1075 Diesel Nala

229x1220 mm



1074 Diesel Burnt

229x1220 mm



TATAMI SAVANE





0356 Denim Wood

229x1220 mm



0538 Midwest

229x1220 mm



0358 Moon Island

229x1220 mm



0357 Portobello

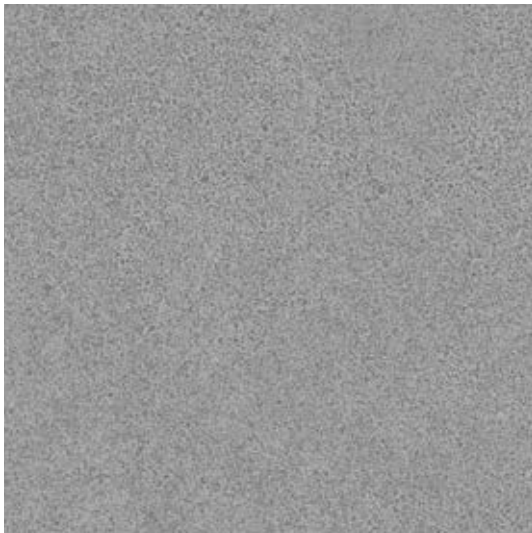
229x1220 mm

CREATION 70 LOOSELAY
MINERAL UNIVERSE



1060 Pure Concrete Light

914x914 mm



1061 Pure Concrete Medium

914x914 mm



1062 Pure Concrete Dark

914x914 mm



8

DESIGN SHADE VARIATION:



Light



Medium



High



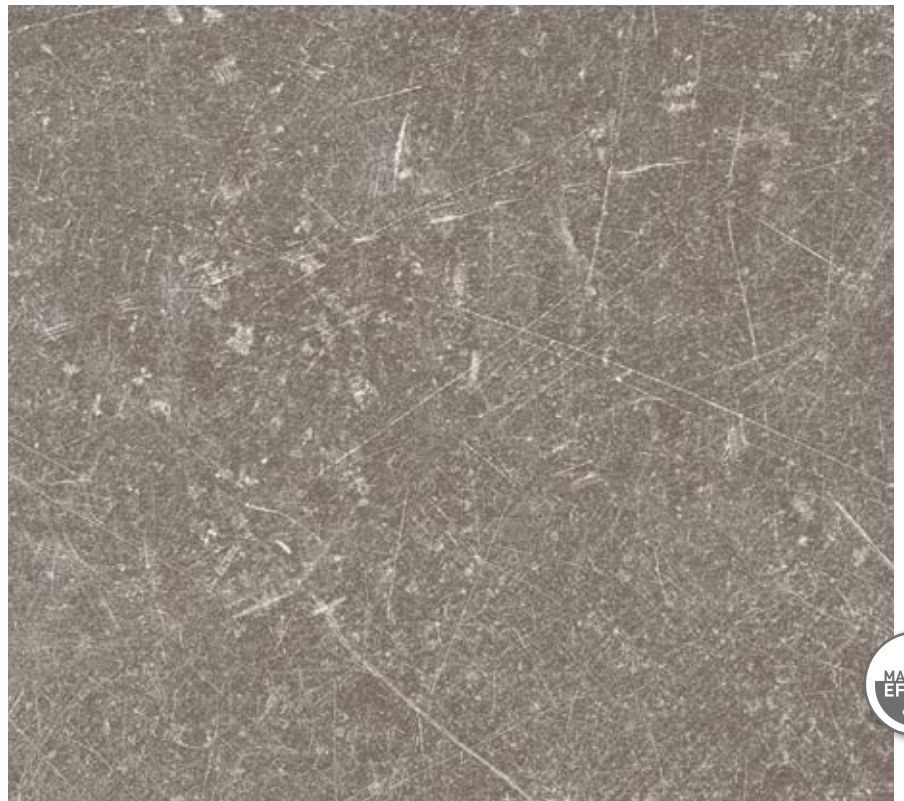
PURE CONCRETE MEDIUM



PURE CONCRETE LIGHT



PURE CONCRETE DARK



0087 Dock Taupe

914x914 mm



DOCK GREY



0085 Dock Grey

914x914 mm



CREATION 70 LOOSELAY
TEXTILE UNIVERSE



1077 Tatami Savane

600x600 mm



1078 Tatami Raffia

600x600 mm



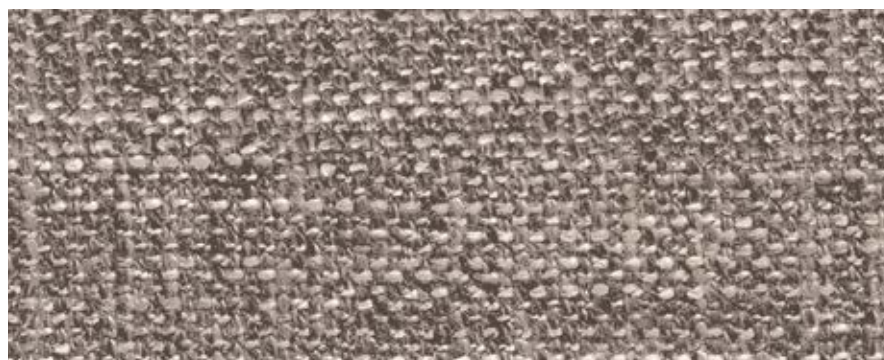
1079 Tatami Smoked

600x600 mm



TATAMI RAFFIA / MOON ISLAND





1083 Gentleman Taupe

229x1220 mm



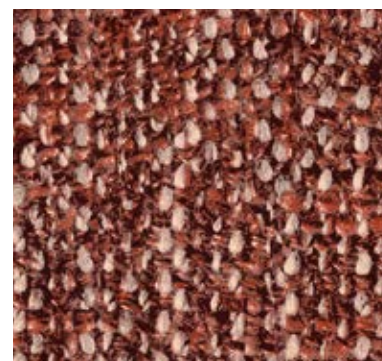
1081 Gentleman Indigo
600x600 mm



1058 Gentleman Grey
600x600 mm



1082 Gentleman Peppermint
600x600 mm



1080 Gentleman Garance
600x600 mm



1076 Gentleman Tweed

229x1220 mm



GENTLEMAN GREY /
GENTLEMAN PEPPERMINT /
GENTLEMAN GARANCE

EXPLORE THE WORLD OF POSSIBILITIES



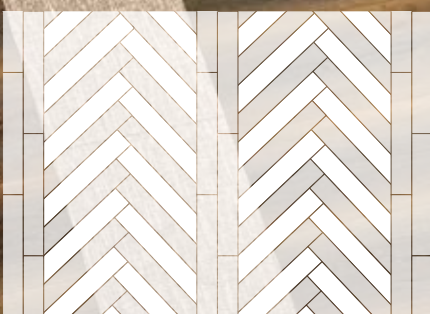
SLIM STRIPES



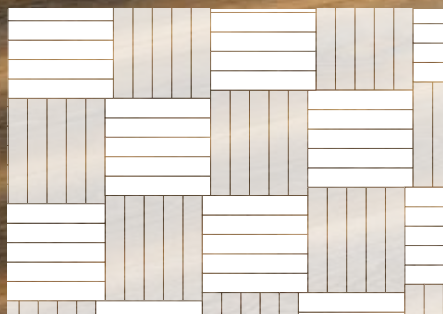
FENCE



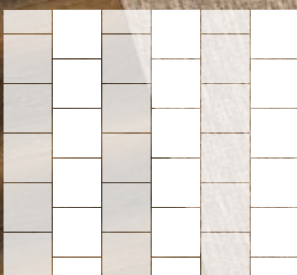
ACCORDEON



RYTHME



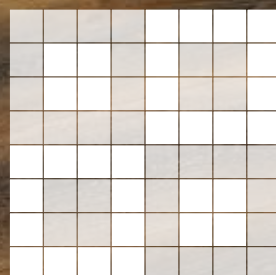
TRICOT



FAT STRIPES



PIANO



TARGET

FENCE





GENTLEMAN TAUPE / DIESEL BURNT

QUICK & EASY TO INSTALL



INSTALLATION WITH TACKIFIER



PRESSURE ROLLER



APPLY PLANKS OR TILES

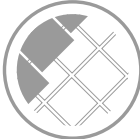


EASY TO REPAIR

INSTALLATION



OVER RAISED ACCESS FLOOR



OVER CERAMIC TILES

Please refer to Gerflor's installation guidelines



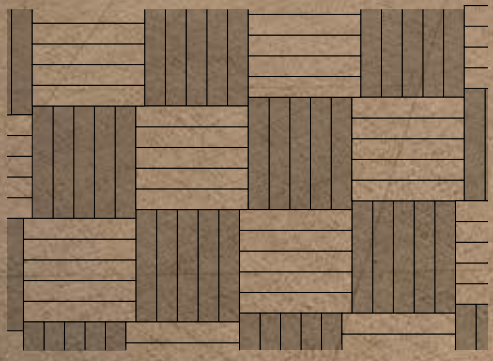
RYTHME



New York University Library



TRICOT





SLIM STRIPES





W
winehouse

FAT STRIPES



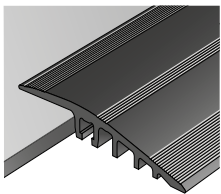


FENCE





PROFILES

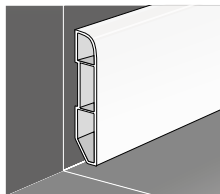


RAMP 5-6MM
(aluminium)
Ref. 0505

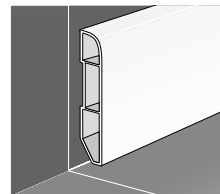


FLAT THRESHOLD*
(aluminium)
Ref. 2570

DESIGN SKIRTINGS

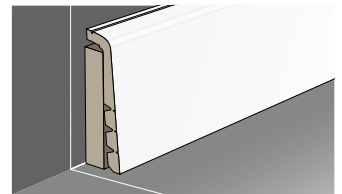


Ref. 6086 + Color code
(Vinyl)



Ref. 5947 + Color code
(MDF)

COVERING SKIRTING



Ref. 2550*
(MDF)

White to paint or
matching design page 22



FOR MORE DETAILS

visit gerflor.com



LVT Finishes Brochure

MATTING

--- 2 TRAFFIC LEVELS --->



QUICK MAT TILE
Ref. 1725 + 1726 + 1727





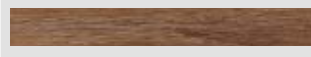



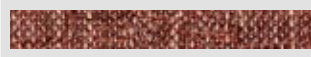

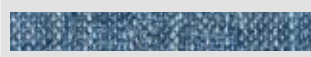






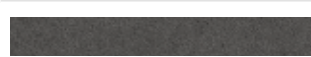
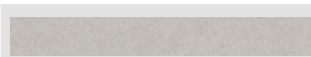
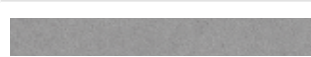



KIT ESPLANADE 9000
Ref. 1700

----->

Suitable with Creation 70 Clic and Looselay

CREATION 70 LOOSELAY

CROSS REFERENCES

SCANS	COLOR DESIGN	LOOSELAY INSTALLATION	CLIC INSTALLATION	GLUE DOWN INSTALLATION	DESIGN SKIRTING MATCHING DESIGN
	DENIM WOOD - 0356	229x1220 mm		152x914 mm	S026
	DIESEL BURNT - 1074	229x1220 mm			WHITE
	DIESEL NALA - 1075	229x1220 mm			WHITE
	DOCK GREY - 0085	914x914 mm	391x729 mm	457x914 mm	S111
	DOCK TAUPE - 0087	914x914 mm	391x729 mm	457x914 mm	S020
	GENTELMAN PEPPERMINT - 1082	600x600 mm			WHITE
	GENTELMAN GARANCE - 1080	600x600 mm			WHITE
	GENTELMAN GREY - 1058	600x600 mm	391x729 mm		WHITE
	GENTELMAN INDIGO - 1081	600x600 mm			WHITE
	GENTELMAN TAUPE - 1083	229x1220 mm			WHITE
	GENTELMAN TWEED - 1076	229x1220 mm			WHITE
	MIDWEST - 0538	229x1220 mm	214x1239 mm	152x914 mm	S039
	MOON ISLAND - 0358	229x1220 mm	214x1239 mm	152x914 mm	S034
	ONKA HONEY - 1054	229x1220 mm	242x1461 mm		S121
	PORTOBELLO - 0357	229x1220 mm	214x1239 mm	152x914 mm	S053
	PURE CONCRETE DARK - 1062	914x914 mm	391x729 mm		WHITE
	PURE CONCRETE LIGHT - 1060	914x914 mm	391x729 mm		WHITE
	PURE CONCRETE MEDIUM - 1061	914x914 mm	391x729 mm		WHITE
	TATAMI RAFFIA - 1078	600x600 mm			WHITE
	TATAMI SAVANE - 1077	600x600 mm			WHITE
	TATAMI SMOKED - 1079	600x600 mm			WHITE

WHITE = S001

TECHNICAL DATA



* information sur le niveau d'émission de substances volatiles dans l'air intérieur, présentant un risque de toxicité par inhalation, sur une échelle de classe allant de A+ (très faibles émissions) à C (fortes émissions).

CREATION 70 LOOSELAY

DESCRIPTION / BESCHREIBUNG / BESCHRIJVING / DESCRIPTION / DESCRIPCIÓN / DESCRICÃO / DESCRIZIONE

Total Thickness / Gesamtdicke / Totale dikte / Épaisseur totale / Espesor total / Essessura total / Spessore totale	EN ISO 24346	mm	6.00		
	ASTM F386-02	inch	0.24		
Thickness of the wearlayer / Dicke der Nutzschrift / Dikte van de slijtlaag / Épaisseur couche d'usure / Espesor capa de uso / Essessura camada de desgaste / Spessore strato di usura	EN ISO 24340	mm	0.70		
	ASTM F410-02	inch	0.03		
Weight / Flächengewicht / Gewicht / Poids / Peso / Peso / Peso	EN ISO 23997	g/m ²	10000		
Size / Format / Afmetingen / Format / Dimensiones / Dimensões / Dimensione	ISO 24342	mm	229 x 1220	600 x 600	914 x 914
	ASTM F 536	inch	9" x 48"	23.6" x 23.6"	36" x 36"
Number of planks / tiles and sqm per box	-	-	6	4	2

CLASSIFICATION / KLASSIFIKATION / CLASSIFICATIE / CLASSIFICATION / CLASIFICACIONES / CLASSIFICAÇÕES / CLASSIFICAZIONI

Norm/Product Specification / Produktnorm / Technische eigenschappen / Norme/Spécification produit / Normas / Normas / Norma prodotto	-	-	EN ISO 10582		
	ASTM F 1700-04	-	Class III Type B		
European Classification / Europäische Klassifizierung / Europese classificatie / Classement européen / Clasificación europea / Classificação Europeia / Europea	EN ISO 10874	Class	34 - 43		
Fire Rating / Brandverhalten / Brand classificatie / Classement Feu / Fuego / Fogo / Reazione al fuoco	EN 13 501-1	Class	Bfl-s1		
Static Electrical Propensity / Begehaufladung / Elektrische eigenschappen / Potentiel de charge / Comportamiento electrostático / Comportamento electrostático / Resistenza elettrica	EN 1815	kV	< 2		
Slip Resistance Wet / Rutschhemmung / Anti-slip / Glissance humide / Deslizamiento húmedo / Escorregamento húmido / Scivolosità umida ¹⁾	DIN 51130/BGR 181	Class	R10		

PERFORMANCES / TECHNISCHE EIGENSCHAFTEN / TESTRESULTAAT / PERFORMANCE / CUALIDADES TÉCNICAS / PERFORMANCES / CARATTERISTICHE TECNICHE

Wear Resistance / Verschleißverhalten / Slijtvastheid / Résistance à l'usure / Abrasión / Abrasão / Resistenza all'abrasione	EN 660.2	mm ³	≤ 2.0		
Wear Group / Verschleißgruppe / Groep slijtvastheid / Groupe d'abrasion / Grupo de abrasión / Grupo de abrasão / Gruppo di abrasione	QB 30	group	T		
Type Binder content / Bindemittelgehalt / Teneur en agent liant / Contenido en ligante / Conteúdo em ligante	ISO 10582	group	I		
Dimensional stability (norm) / Maßstabilität (norm) / Maatvastheid (norm) / Stabilité dimensionnelle (norme) / Estabilidad Dimensional (Exigencia) / Estabilidade dimensional (normalização) / Stabilità dimensionale (requisito normativo)	EN ISO 23999	%	≤ 0.15		
Dimensional stability (average measured value) / Maßstabilität (Durchschnittswert) / Stabilité dimensionnelle (valeur moyenne mesurée) / Maatvastheid (gemeten gemiddelde waarde) / Estabilidad Dimensional (Valor medido) / Estabilidade Dimensional (Valor medio) / Stabilità dimensionale (rilevata)	-	%	≤ 0.05		
Residual Indentation / Resteindruck / Indrukbelasting / Poinçonnement statique rémanent / Punzonamiento / Punçoamento / Impronta	EN ISO 24343-1	mm	≤ 0.10		
Impact sound insulation / Trittschallverbesserungsmaß / Geluidsisolatie / Isolation acoustique bruits de chocs / Acústica / Isolamento acústico	EN ISO 717-2	dB	9		
Room Impact / Raumschall / Loopgeluid / Sonorité à la marche / Rumore al calpestio / Sonoridad en la pisada / Sonoridade ao andar	NF S 31074	dB	73		
Castor chair test / Stuhlrollenbeanspruchung / Rotweerstand bureaustoelen / Essai de la chaise à roulettes / Determinación del efecto de una silla con ruedas / Resistência a cadeiras de rodas / Resistenza al passaggio di sed (Type W)	ISO 4918	-	OK		
Thermal Conductivity / Wärmeleitfähigkeit / Thermische weerstand / Conductivité thermique / Conductividad térmica / Contuidade térmica / Resistencia térmica / Värmeledningsmotstånd / Varmemotstand	EN ISO 10456	W/(m.K)	0.25		
Colour Fastness / Lichtechtheit / Lichtechtheit / Solidité lumière / Resistencia a la luz / Estabilidade das cores / Solidità alla luce	EN 20 105 - B02	degree	> 6		
Surface Treatment / Oberflächenvergütung / Oppervlaktebehandling / Traitement de surface / Tratamiento de superficie / Tratamento de superfície	-	-	PUR+ Matt		
Chemical Products Resistance / Verhalten gegenüber Chemikalien / Chemische bestendigheit / Résistance aux produits chimiques / Resistencia a los productos químicos / Resistência aos produtos químicos / Resistenza ai prodotti chimici ²⁾	EN ISO 26987	-	OK		

ENVIRONMENT/INDOOR AIR QUALITY / UMWELT/RAUMLUFTQUALITÄT / ENVIRONNEMENT/QUALITE DE L'AIR INTERIEUR / MEDIO AMBIENTE/CALIDAD INTERIOR DEL AIRE INTERIOR / MEIO AMBIENTE/QUALIDADE DO AR INTERIOR

TVOC after 28 days / TVOC (28 Tage) / TVOC (28 dagen) / TVOC après 28 jours / TVOC (28 dias) / TVOC (28 dias) / TVOC (28 giorni) / TVOC (28 dagar) / TVOC (28 dager)	ISO 16000-6	µg/m ³	< 10		
--	-------------	-------------------	------	--	--

CE MARKING / CE KENNZEICHNUNG / EG_CONFORMITEITSMERK / MARQUAGE CE / MARCA DE CONFORMIDAD CE / MARCA DE CONFORMIDADE CE / MARCATURA CE DI CONFORMITA

	EN 14041	-				
--	----------	---	--	--	--	--

(1) Ramp test with oil / Schiefe Ebene / Plan incliné avec huile

(2) Beständig gegenüber nicht färbenden alkoholhaltigen Handdesinfektionsmitteln, Haushaltschemikalien und verdünnten Säuren und Laugen bei kurzzeitiger Einwirkung.

PACKAGING

Product size (mm)	Tiles-planks / Box	Sqm / Box	Box weight (kg)	Pallet sizes (mm)	Sqm / Pallet	Pallet weight (kg)
229 x 1220	6	1.68	17.2	1000 x 1260 x 662	80.5	849
600 x 600	4	1.44	14.9	630 x 1260 x 895	72.0	760
914 x 914	2	1.67	17.6	950 x 950 x 890	80.3	867

CREATION, NO FORMALDEHYDE, BETTER INDOOR AIR QUALITY

<p>COMPOSITION 100% REACH Phthalate Free <small>(except recycled content)</small></p>	<p>INDOOR AIR QUALITY TVOC below detection level No Formaldehyde emission</p>	<p>RECYCLABLE 100%</p>	<p>RECYCLED CONTENT 35%</p>	<p>WELLNESS Walking noise reduction: -10dB vs laminate</p>
--	--	-----------------------------------	--	---

Visualize your reference



interiordesigner.gerflor.com

30 years experience
Since 1985

Manufacturer
3 LVT Factories

World Class Logistics
12 Logistics Hubs

Gerflor Design Centre
Exclusive Designs



“Serenity,,
Elodie - **End User**



“Time saving,,
Mika - **Installer**



“Unique Design,,
Pierre - **Architect**



“Confidence,,
Claire - **Store Manager**



“Reliability,,
Lucas - **Distributor**

That's why Gerflor is our **Reference**

Gerflor International
Tel: +33 (0)4 74 05 40 00
Fax: +33 (0)4 74 05 03 13
e-mail: gerflorcontract@gerflor.com
gerflor.com

Gerflor[®]
theflooringgroup