

ENVIRONMENTAL PRODUCT DECLARATION

as per ISO 14025 and EN 15804+A2

Owner of the Declaration	Swisspearl Group AG
Publisher	Institut Bauen und Umwelt e.V. (IBU)
Programme holder	Institut Bauen und Umwelt e.V. (IBU)
Declaration number	EPD-SWP-20240426-CCA1-EN
Issue date	06/12/2024
Valid to	05/12/2029

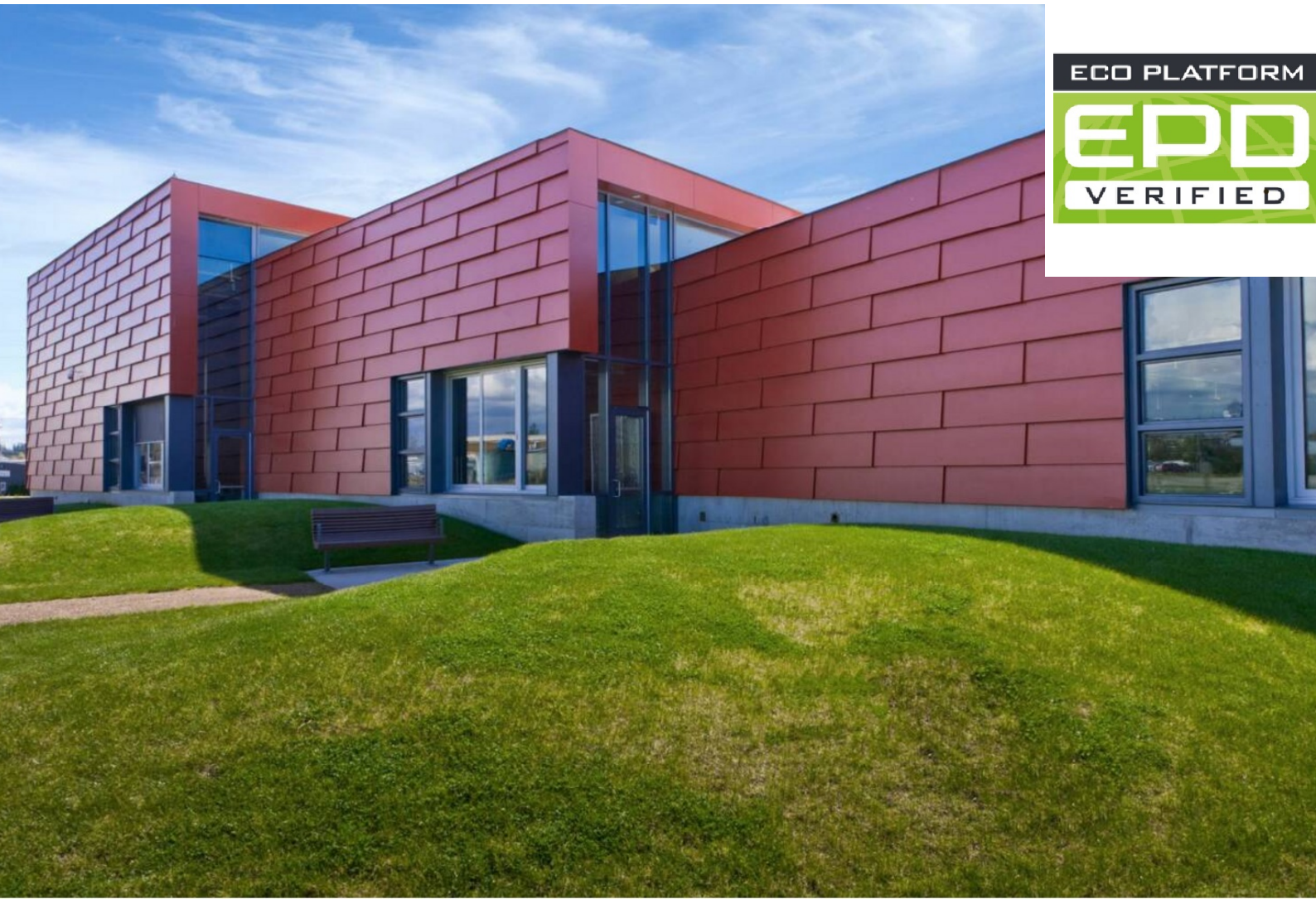
Swisspearl Carat/Avera/Vintago/Reflex (grey cement) Swisspearl Group AG

www.ibu-epd.com | <https://epd-online.com>



ECO PLATFORM

EPD
VERIFIED



General Information

Swisspearl Group AG

Programme holder

IBU – Institut Bauen und Umwelt e.V.
Hegelplatz 1
10117 Berlin
Germany

Declaration number

EPD-SWP-20240426-CCA1-EN

This declaration is based on the product category rules:

Fibre cement / Fibre concrete, 01/08/2021
(PCR checked and approved by the SVR)

Issue date

06/12/2024

Valid to

05/12/2029



Dipl.-Ing. Hans Peters
(Chairman of Institut Bauen und Umwelt e.V.)



Florian Pronold
(Managing Director Institut Bauen und Umwelt e.V.)

Swisspearl Carat/Avera/Vintago/Reflex (grey cement)

Owner of the declaration

Swisspearl Group AG
Eternitstrasse 3
8867 Niederurnen
Switzerland

Declared product / declared unit

1m² of Swisspearl Carat/Avera/Vintago/Reflex/Vintago-Reflex

Scope:

This EPD refers to the Swisspearl pigmented facade panels based on grey cement produced in the factories located in Niederurnen (Switzerland) and are based on the production data of the year 2022.
The owner of the declaration shall be liable for the underlying information and evidence; the IBU shall not be liable with respect to manufacturer information, life cycle assessment data and evidences.

The EPD was created according to the specifications of EN 15804+A2. In the following, the standard will be simplified as *EN 15804*.

Verification

The standard EN 15804 serves as the core PCR	
Independent verification of the declaration and data according to ISO 14025:2011	
<input type="checkbox"/>	internally
<input checked="" type="checkbox"/>	externally



Dr. Eva Schmincke,
(Independent verifier)

Product

Product description/Product definition

Swisspearl pigmented fibre cement board is a high-quality, through-coloured board designed for façade use. Deemed as non-combustible, it is available in large sheets with a variety of colours and profiles, and features a rivet screw fix system for efficient on-site installation. The rivet screw fix system is not part of this declaration.

This statement pertains to pigmented façade boards produced in Niederurnen, Switzerland, and includes the product names

Carat
Avera
Vintago
Reflex
Vintago-Reflex.

Some products are also offered in white cement. If a product includes the additional naming of Elfenbein (Ivory) or Bernstein (Amber), the environmental results can be found in another EPD.

Statement on representivity

All the listed products are produced by the same process and contain the same raw materials. Only the surface treatment of the listed products are different. Furthermore, all listed products are produced in the same production hall in Niederurnen, Switzerland. This difference can range from the type of coating, for instance whether the product has an opaque, translucent or transparent coating. The coating is ~ 1,3 % of the total weight of a façade product.

Whether the product is opaque, translucent or transparent is impacted predominantly by the type and amount of pigment in the coating. Typically the pigment in Swisspearl coating for this product

range is maximum 0,9% of the total mass of the product.

Therefore, the changes in coating between the products are considered to be very small.

For marketing within the European Union/European Free Trade Association (excluding Switzerland), Regulation (EU) No. 305/2011 (CPR) is applicable. The product requires a declaration of performance that considers EN 12467:2012+A2:2018 'Fibre-cement flat sheets - Product specification and test methods' along with CE marking.

Application

Swisspearl pigmented façade board are intended for installation as both outdoor and indoor façade cladding by use of a rivet screw fix system.

Technical Data

The technical specifications of the Swisspearl pigmented façade boards can be seen in the following table:

Constructional data

Name	Value	Unit
Thermal conductivity	0.56	W/(mK)
Density, min	1650	kg/m ³
Reaction to fire	A2-s1,d0	
Modulus of elasticity	12000	MPa
Tensile strength crosswise to fibre	28	MPa
Compressive strength	40	MPa
Shrinkage	1.0	mm/m
Coefficient of thermal expansion	1.0E-05	1/K
Moisture expansion	0.5	mm/m
Moisture content	8.0	M.-%
Frost resistance	Category A compliant	
Heat resistance	Guaranteed up to - 40 °C and + 80 °C	
Water absorption capacity	18	M.-%
Water vapour diffusion	0.00328	mg/m h Pa

The table above presents the technical specifications for Swisspearl Carat. For detailed and supplementary data on other products within the range, please refer to the download center on Swisspearl's homepage at [www.swisspearl.com/services/downloads](^2^).

Performance data of the product in accordance with the declaration of performance (DoP) with respect to its essential characteristics according to EN 12467:2012+A2:2018 'Fibre-cement flat sheets - Product specification and test methods and the CE-marking.

Base materials/Ancillary materials

The table below displays the primary components of the product. The values are presented as ranges that encompass the five specified product variations with an 8 mm thickness. Due to confidentiality, specific recipes and certain input materials (less than 2% by mass) are omitted from this table.

Name	Value	Unit
Cement	70-90	%
Cellulose	1-10	%
Pigments	1-10	%
PVA	1-10	%
Coating (paint)	0-5	%

Material explanation

- Portland Cement: Manufactured according to DIN EN 197-1 from limestone, marl and sand. The material is crushed, dried, calcinated to clinker and ground to cement.
- PVA: to secure long term performance of the reinforced fibres, such as cellulose.
- Cellulose fibres (0.5-3mm): To ensure collection of powder during filtration. The product does not contain any substances of very high concern (SVHC) at concentrations greater than 0.1% of the product mass, in accordance with Regulation (EC) No. 1907/2006 (REACH).

Manufacturing process

The Swisspearl pigmented facade boards are produced by the use of the Hatschek method: the base materials (binder, fibres, etc) are processed into a homogeneous mixture with water and

transferred to the vats of the Hatschek machine. Rotating sieve cylinders in the vats collect a thin layer of solid material and transfer the layer to a rotating felt for dewatering and further onto the accumulating format roller. The format roller is gradually covered by layers of fibre cement. Once the required thickness of the boards is reached, the fibre cement layer, still moist and mouldable, is unwound and taken from the roll. Further information on the Hatschek method may be found here:

www.fibrecementconsulting.com/publications/011011.hatschekfilmsummarytable

After the pre-curing period, the fibre-cement boards are dried. After the drying process the products are ready to be sanded, trimmed edges, cut to customised size, painted, edge-sealed,

hydrophobated and finished with quality controls and packing processes.

Reference service life

The Swisspearl pigmented façade boards have been introduced quite recently to the market. Consequently, there is no substantiated data on their reference service life (RSL) according to the ISO 15686. However the service life is estimated to be 50 years or higher. This is in accordance with the table published by the Bundesinstitut für Bau-, Stadt- und Raumforschung (BBSR) (code 335.511), which estimates the service life of facade and roofing products.

LCA: Calculation rules

Declared Unit

In this EPD the declared unit is defined as the production of 1 m² of Swisspearl pigmented fibre cement façade board with a thickness of 8 mm, and an expected lifetime of 50 years or higher, and its related impacts over the 'cradle to grave' lifecycle modules.

Declared unit and mass reference

Swisspearl pigmented façade boards come in 6-, 8-, and 12-mm thicknesses. The Environmental Product Declaration (EPD) details the environmental impact for the 8-mm boards. To extrapolate the results for other thicknesses, a conversion factor is required, which is provided in the table below.

Name	Value	Unit
Gross density	1834	kg/m ³
Grammage	14.7	kg/m ²
Layer thickness	0.008	m
Conversion factor 6 mm	0.75	
Conversion factor 12 mm	1.5	
Declared unit	1	m ²

Other declared units are allowed if the conversion is shown transparently.

For IBU core EPDs (where clause 3.6 is part of the EPD): for average EPDs, an estimate of the robustness of the LCA values must be made, e.g. concerning the variability of the production process, geographical representativeness and the influence of background data and preliminary products compared to the environmental impacts caused by the actual production.

System boundary

The modules considered in this EPD follow a cradle to grave assessment: A1-A5, B1-B7, C1-C4, D.

A1 -The system boundaries include the provision and processing of raw materials. These include in particular cement, plastic fibres, pulp and packaging materials.

A2 -The transports to the manufacturer were specifically collected for all starting materials.

A3 -The production includes also all in-plant energy consumption (gas + electricity), as well as water used in the production process.

A4 -The transport, part of the construction process, is an average of the total distance of all products delivered to the point of installation. This is calculated to be 336 km by truck.

A5 -All environmental impacts associated with the disposal of packaging handled at the construction site are accounted for. It is assumed incinerated at an incineration plant. Disposal of product waste is assumed to be landfilled. Furthermore, environmental impacts associated with trucks and fuel for the construction installation are included.

B1-B7 modules are not included, as no significant environmental impact is associated with the use phase of the product.

C1 -Accounts for the environmental impacts associated with dismantling and demolition of the fibre cement boards. Fuel used for demolition equipment and transport on-site vehicles.

C2 -Transportation of the discarded products from the construction site to a landfilling site. The transport is estimated to be 100 km in an average truck.

C3 -The fibre cement panels are sent to landfill and therefore there are no environmental impacts associated with waste processing of materials flows intended for reuse, recycling or energy recovery.

C4 -Environmental impacts associated with the processes at the landfill. The waste code for fibre cement products according to the European Waste Catalogue is 10 13 11, which describes waste from cement-based composite materials without asbestos.

D -The fibre cement panels are sent to landfill after use. The product has therefore no impact during this stage and no associated environmental impacts. The panels are expected to be reusable over time, but this is not included in this assessment. Incineration credits for the packaging material have been considered.

Background data and data quality

Modelling of the production of 1m² of pigmented facade board is done with GaBi Software System and Database for Life Cycle Engineering. The model has been developed by Sphera Solutions GmbH. Each background dataset has been reviewed on geographical, technological, and temporal scale.

Technological: All primary and secondary data are modelled to be specific to the technology mixes under study. Proxy data are used where technology-specific data are unavailable. The technological representativeness is considered to be good.

Geographical: All primary and secondary data are collected specific to the countries/regions under study. Where country/region specific data are unavailable, proxy data are

used. The geographical representativeness is considered to be good.

Temporal: All primary data collected is based on the year 2021. All secondary data come from the GaBi 2020.1 databases and are representative for the years 2020-2025. Temporal representativeness is considered to be very good.

Allocation in foreground data

The production process does not deliver any co-products. Therefore, the applied model does not contain any allocation. Pre-processing waste (plastics) is sent to a waste incineration plant. The resulting electrical and thermal energy is credited in module A1. For the waste incineration plant an R1-value of above 0.6 is assumed. The resulting credits based on the incineration of the packaging of the product are declared in module D.

This EPD is based on a cradle-to-grave + module D, in which >99 weight-% has been accounted for. The general rules for the exclusion of inputs and outputs follows the requirements in EN 15804:2012+A2:2019, 6.3.5,

where the total of neglected input flows per module shall be a maximum of 5 % of energy usage and mass and 1 % of energy usage and mass for unit processes.

The following processes were considered below the cut-off and are not included in this assessment:

- Electricity used for the mounting of the boards
- Packaging of raw materials
- Environmental impacts caused by the personnel of the production plants are not included in the LCA.

Geographic Representativeness

Land or region, in which the declared product system is manufactured, used or handled at the end of the product's lifespan: Europe

Comparability

Basically, a comparison or an evaluation of EPD data is only possible if all the data sets to be compared were created according to EN 15804 and the building context, respectively the product-specific characteristics of performance, are taken into account.

LCA: Scenarios and additional technical information

Characteristic product properties of biogenic carbon

The biogenic carbon containing material (cellulose) in Swisspearl pigmented facade board is required to be listed separately. The following table shows the biogenic carbon content in the product and accompanying packaging:

Information on describing the biogenic carbon content at factory gate

Name	Value	Unit
Biogenic carbon content in product	0.012	kg C
Biogenic carbon content in accompanying packaging	0.024	kg C

Note: 1 kg of biogenic carbon is equivalent to 44/12 kg of CO₂

Transport to the building site (A4)

Estimating transportation to each construction site is quite complex. Nevertheless, approximately 80% of the pigmented fiber cement boards produced in Niederurnen, Switzerland, are distributed domestically. The most distant point from the production site is Geneva, at 336 km, making it a suitable proxy for the average distance to the installation sites. Typically, the products are delivered by truck.

Name	Value	Unit
Transport distance	336	km
Gross density of products transported	1834	kg/m ³

Installation into the building (A5)

Installation of the boards is carried out by use of an automatic screwdriver. It is estimated that under high wind load the maximum amount of screws used per declared unit of a facade board is 8 screws.

Name	Value	Unit
Plastic waste	0.004	kg
Pallets	0.55	kg
Screws	8	pcs

As previously disclosed, the estimated lifetime of Swisspearl pigmented fibre cement panels is 50 years or higher.

Reference service life

Name	Value	Unit
Life Span (according to BBSR)	>50	a

End of life (C1-C4)

In the end-of-life stage of the product, the pigmented fibre cement boards are assumed to be sent to landfill. The waste code for fibre cement products according to the European Waste Catalogue is 10 13 11. Reuse of boards is possible if boards are in good condition, however, this is not included in the assessment due to lack of quantitative data.

Name	Value	Unit
Landfilling	14.7	kg
Reuse	If in good condition	

Reuse, recovery and/or recycling potentials (D), relevant scenario information

Name	Value	Unit
------	-------	------

LCA: Results

The following tables show the results of life cycle assessment indicators, resource use and waste related to 1m2 of Swisspearl pigmented fibre cement board. The data is representative of the products of Swisspearl.

DESCRIPTION OF THE SYSTEM BOUNDARY (X = INCLUDED IN LCA; MND = MODULE OR INDICATOR NOT DECLARED; MNR = MODULE NOT RELEVANT)

Product stage			Construction process stage		Use stage							End of life stage				Benefits and loads beyond the system boundaries
Raw material supply	Transport	Manufacturing	Transport from the gate to the site	Assembly	Use	Maintenance	Repair	Replacement	Refurbishment	Operational energy use	Operational water use	De-construction demolition	Transport	Waste processing	Disposal	Reuse-Recovery-Recycling-potential
A1	A2	A3	A4	A5	B1	B2	B3	B4	B5	B6	B7	C1	C2	C3	C4	D
X	X	X	X	X	MND	MND	MNR	MNR	MNR	MND	MND	X	X	X	X	X

RESULTS OF THE LCA - ENVIRONMENTAL IMPACT according to EN 15804+A2: 1 m2 Swisspearl Carat/Avera/Vintago/Reflex (grey cement)

Parameter	Unit	A1	A2	A3	A4	A5	C1	C2	C3	C4	D
GWP-total	kg CO ₂ eq	1.3E+01	1.99E-01	4.77E-01	2.96E-01	2.02E+00	4.24E-04	8.8E-02	-1.51E-01	8.04E-01	-3.63E-01
GWP-fossil	kg CO ₂ eq	1.29E+01	1.95E-01	1.42E+00	2.83E-01	9.76E-01	4.2E-04	8.41E-02	4.43E-01	2.1E-01	-3.61E-01
GWP-biogenic	kg CO ₂ eq	3.1E-02	3.89E-03	-9.44E-01	1.3E-02	1.04E+00	3.57E-06	3.87E-03	-5.95E-01	5.94E-01	-1.75E-03
GWP-luluc	kg CO ₂ eq	4.33E-03	1.69E-05	1.02E-03	6.7E-06	6.81E-04	5.94E-07	1.99E-06	1.08E-03	6.16E-04	-2.37E-04
ODP	kg CFC11 eq	4.1E-14	2.37E-16	1.83E-14	3.24E-17	6.56E-15	1.01E-17	9.65E-18	4.75E-15	8.15E-16	-3.91E-15
AP	mol H ⁺ eq	2.73E-02	3.97E-03	2.56E-03	2.33E-04	2.44E-03	8.74E-07	6.92E-05	3.77E-03	1.49E-03	-4.59E-04
EP-freshwater	kg P eq	1.05E-05	6.51E-08	3.71E-05	6.01E-08	1.78E-06	1.13E-09	1.79E-08	1.16E-05	3.52E-07	-4.48E-07
EP-marine	kg N eq	7.82E-03	1.05E-03	9.56E-04	7.35E-05	5.65E-04	2.08E-07	2.19E-05	1.18E-03	3.88E-04	-1.32E-04
EP-terrestrial	mol N eq	8.54E-02	1.15E-02	8.77E-03	8.15E-04	6.23E-03	2.18E-06	2.42E-04	1.25E-02	4.26E-03	-1.42E-03
POCP	kg NMVOC eq	2.51E-02	2.95E-03	2.34E-03	2.22E-04	1.79E-03	5.63E-07	6.61E-05	3.37E-03	1.18E-03	-3.72E-04
ADPE	kg Sb eq	7.39E-07	8.63E-09	2.62E-07	9.88E-09	4.94E-05	1.24E-10	2.94E-09	1.46E-07	1.98E-08	-5.79E-08
ADPF	MJ	1.05E+02	2.57E+00	2.93E+01	4E+00	9.91E+00	7.47E-03	1.19E+00	7.03E+00	2.78E+00	-6.26E+00
WDP	m ³ world eq deprived	7.61E-01	1.75E-03	4.86E-02	4.68E-04	1.34E-01	6.74E-05	1.39E-04	8.95E-03	2.25E-02	-2.62E-02

GWP = Global warming potential; ODP = Depletion potential of the stratospheric ozone layer; AP = Acidification potential of land and water; EP = Eutrophication potential; POCP = Formation potential of tropospheric ozone photochemical oxidants; ADPE = Abiotic depletion potential for non-fossil resources; ADPF = Abiotic depletion potential for fossil resources; WDP = Water (user) deprivation potential

RESULTS OF THE LCA - INDICATORS TO DESCRIBE RESOURCE USE according to EN 15804+A2: 1 m2 Swisspearl Carat/Avera/Vintago/Reflex (grey cement)

Parameter	Unit	A1	A2	A3	A4	A5	C1	C2	C3	C4	D
PERE	MJ	4.64E+00	8.25E-02	1.52E+01	1.32E-02	2.11E+00	3.44E-03	3.93E-03	1.88E+01	7.86E+00	-1.34E+00
PERM	MJ	7.49E+00	0	1.4E-01	0	-1.4E-01	0	0	0	-7.49E+00	0
PERT	MJ	1.21E+01	8.25E-02	1.54E+01	1.32E-02	1.97E+00	3.44E-03	3.93E-03	1.88E+01	3.75E-01	-1.34E+00
PENRE	MJ	1.05E+02	2.58E+00	2.9E+01	4.01E+00	1.03E+01	7.47E-03	1.19E+00	7.03E+00	2.78E+00	-6.26E+00
PENRM	MJ	0	0	3.4E-01	0	-3.4E-01	0	0	0	0	0
PENRT	MJ	1.05E+02	2.58E+00	2.93E+01	4.01E+00	9.96E+00	7.47E-03	1.19E+00	7.03E+00	2.78E+00	-6.26E+00
SM	kg	0	0	0	0	0	0	0	0	0	0
RSF	MJ	0	0	0	0	0	0	0	0	0	0
NRSF	MJ	0	0	0	0	0	0	0	0	0	0
FW	m ³	2.6E-02	8.56E-05	3.88E-03	2.12E-05	4.82E-03	3.35E-06	6.31E-06	4.95E-03	6.87E-04	-1.31E-03

PERE = Use of renewable primary energy excluding renewable primary energy resources used as raw materials; PERM = Use of renewable primary energy resources used as raw materials; PERT = Total use of renewable primary energy resources; PENRE = Use of non-renewable primary energy excluding non-renewable primary energy resources used as raw materials; PENRM = Use of non-renewable primary energy resources used as raw materials; PENRT = Total use of non-renewable primary energy resources; SM = Use of secondary material; RSF = Use of renewable secondary fuels; NRSF = Use of non-renewable secondary fuels; FW = Use of net fresh water

RESULTS OF THE LCA - WASTE CATEGORIES AND OUTPUT FLOWS according to EN 15804+A2: 1 m2 Swisspearl Carat/Avera/Vintago/Reflex (grey cement)

Parameter	Unit	A1	A2	A3	A4	A5	C1	C2	C3	C4	D
HWD	kg	1.24E-08	6.04E-11	5.53E-09	2.76E-11	1.26E-09	1.97E-12	8.2E-12	5.72E-09	2.96E-10	-1.4E-09
NHWD	kg	1.28E-01	3.56E-04	8.49E-01	4.01E-04	3.47E-02	5.3E-06	1.19E-04	2.26E-02	1.39E+01	-2.83E-03
RWD	kg	2.84E-03	2.67E-05	3.79E-03	4.29E-06	3.62E-04	1.11E-06	1.28E-06	5.03E-04	2.92E-05	-4.32E-04
CRU	kg	0	0	0	0	0	0	0	0	0	0

MFR	kg	0	0	0	0	0	0	0	0	0	0
MER	kg	0	0	0	0	0	0	0	0	0	0
EEE	MJ	0	0	0	0	6.51E-04	0	0	0	0	0
EET	MJ	0	0	0	0	6.51E-04	0	0	0	0	0

HWD = Hazardous waste disposed; NHWD = Non-hazardous waste disposed; RWD = Radioactive waste disposed; CRU = Components for re-use; MFR = Materials for recycling; MER = Materials for energy recovery; EEE = Exported electrical energy; EET = Exported thermal energy

RESULTS OF THE LCA – additional impact categories according to EN 15804+A2-optional: 1 m2 Swisspearl Carat/Avera/Vintago/Reflex (grey cement)

Parameter	Unit	A1	A2	A3	A4	A5	C1	C2	C3	C4	D
PM	Disease incidence	3.02E-07	6.7E-08	1.47E-07	1.29E-09	2.87E-08	7.37E-12	3.85E-10	2.39E-07	1.86E-08	-3.95E-09
IR	kBq U235 eq	4.21E-01	4.32E-03	2.63E-01	6.08E-04	4.39E-02	1.83E-04	1.81E-04	8.2E-02	3.08E-03	-7.09E-02
ETP-fw	CTUe	5.34E+01	1.81E+00	1.41E+01	2.9E+00	2.72E+00	3.14E-03	8.63E-01	4.53E+00	1.59E+00	-1.25E+00
HTP-c	CTUh	1.99E-09	3.44E-11	4.41E-10	5.4E-11	9.87E-10	8.89E-14	1.61E-11	2.38E-10	2.34E-10	-5.89E-11
HTP-nc	CTUh	1.85E-07	1.51E-09	3.18E-08	2.25E-09	1.19E-08	3.36E-12	6.71E-10	1.5E-08	2.58E-08	-2.33E-09
SQP	SQP	9.62E+00	5.72E-02	1.5E+02	1.02E-02	1.65E+00	2.36E-03	3.05E-03	2.86E+02	5.62E-01	-9.2E-01

PM = Potential incidence of disease due to PM emissions; IR = Potential Human exposure efficiency relative to U235; ETP-fw = Potential comparative Toxic Unit for ecosystems; HTP-c = Potential comparative Toxic Unit for humans (cancerogenic); HTP-nc = Potential comparative Toxic Unit for humans (not cancerogenic); SQP = Potential soil quality index

Disclaimer 1 – for the indicator 'Potential Human exposure efficiency relative to U235'. This impact category deals mainly with the eventual impact of low-dose ionizing radiation on human health of the nuclear fuel cycle. It does not consider effects due to possible nuclear accidents, occupational exposure or radioactive waste disposal in underground facilities. Potential ionizing radiation from the soil, radon and from some construction materials is also not measured by this indicator.

Disclaimer 2 – for the indicators 'abiotic depletion potential for non-fossil resources', 'abiotic depletion potential for fossil resources', 'water (user) deprivation potential, deprivation-weighted water consumption', 'potential comparative toxic unit for ecosystems', 'potential comparative toxic unit for humans – cancerogenic', 'Potential comparative toxic unit for humans - not cancerogenic', 'potential soil quality index'. The results of this environmental impact indicator shall be used with care as the uncertainties on these results are high as there is limited experience with the indicator.

LCA interpretation

Based on the overall lifecycle, the product stage (A1-A3) of Swisspearl pigmented façade boards has the largest impact on the majority of impact categories. As shown in the figure below, the raw material acquisition stage (A1) contributes the most to the Global Warming Potential (GWP) with a 77% share, primarily due to the high cement content. This followed by the manufacturing stage (A3) with an 8.5% share.

In the construction process stage, the assembly (A5) of the product accounts for the largest share, contributing 6.5% to the total GWP. This is primarily due to the disposal of packaging and product waste.

For the end-of-life stage (C1-C4), waste processing (C3) is the biggest contributor, with a 2.5% share.

There are two impact categories where A1 is not the dominant contributor. The first is the eutrophication potential for freshwater (EP-freshwater), where A3 has the largest share at 60%, attributed to wastewater disposal during production. The second is the abiotic depletion potential for non-fossil resources (ADPE), where stage A5 has the majority share of the impacts.

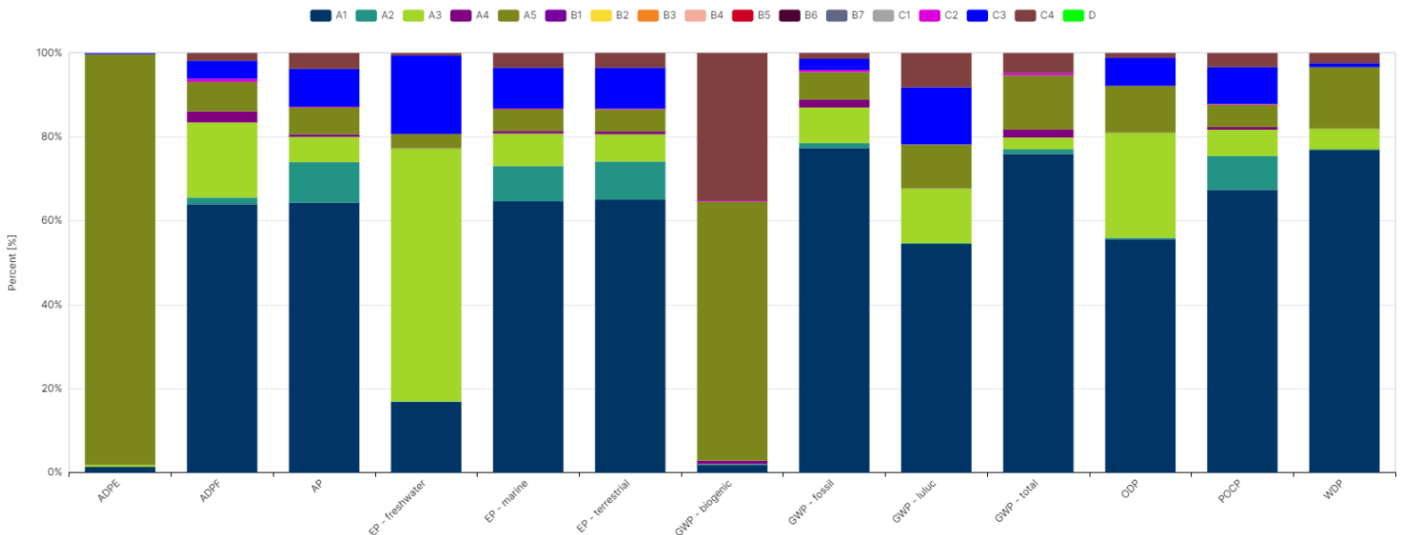


Figure 1- Impact categories for each module

References

Standards

DIN EN 197-1

DIN EN 197-1, Cement - Part 1: Composition, specifications and conformity criteria for common cements.

EN 492

EN 492:2012+A1, Fibre-cement slates and fittings — Product specification and test methods.

ISO 14025

EN ISO 14025:2006, Environmental labels and declarations — Type III environmental declarations — Principles and procedures.

ISO 15686-1, -2, -7 and -8

ISO 15686-1:2011

Part 1 General principles and framework

Part 2 Service life prediction procedures

Part 7 Performance evaluation for feedback of service life data from practice

Part 8 Reference service life and service-life estimation

EN 15804

EN 15804:2012+A1:2013, Sustainability of construction works — Environmental Product Declarations — Core rules for the product category of construction products.

EN 15804

EN 15804:2012+A2:2019+AC:2021, Sustainability of construction works — Environmental Product Declarations — Core rules for the product category of construction products.

REACH

Regulation (EC) No 1907/2006, Registration, Evaluation, Authorisation and Restriction of Chemicals (REACH)

Further References

BBSR

Bundesinstitut für Bau-, Stadt- und Raumforschung (BBSR): Nutzungsdauer von Bauteilen für Lebenszyklusanalyse nach Bewertungssystem Nachhaltiges Bauen (BNB), 2011

GaBi documentation

GaBi life cycle inventory data documentation

www.gabisoftware.com/support/gabi/gabidatabase2020/leidocumentation

GaBi software

Sphera Solutions GmbH GaBi Software System and Database for Life Cycle Engineering CUP Version: 2022.2 University of Stuttgart Leinfelden Echterdingen

IBU 2021

Institut Bauen und Umwelt e.V.: General Instructions for the EPD programme of Institut Bauen und Umwelt e.V., Version 2.0, Berlin: Institut Bauen und Umwelt e.V., 2021
www.ibu-epd.com

PCR Part A

Calculation Rules for the Life Cycle Assessment and Requirements on the Project Report, Berlin: Institut Bauen und Umwelt e.V., www.ibu-epd.com, Version 2.2, 2022

PCR Part B

Requirements of the EPD for Fibre Cement/Fibre Concrete, version 1.7, Institut Bauen und Umwelt e.V., www.bau-umwelt.com, 2019

REGULATION (EU) No 305/2011 Harmonised conditions for the marketing of construction products and repealing Council Directive 89/106/EEC

Swisspearl Group A/G

Swisspearl Group A/G: Information on technical data and downloads. Downloads - Swisspearl

The literature referred to in the Environmental Product Declaration must be listed in full. Standards already fully quoted in the EPD do not need to be listed here again. The current version of PCR Part A and PCR Part B of the PCR document on which they are based must be referenced. The literature referred to in the Environmental Product Declaration must be listed in full. Standards already fully quoted in the EPD do not need to be listed here again. The current version of PCR Part A and PCR Part B of the PCR document on which they are based must be referenced.



Publisher

Institut Bauen und Umwelt e.V.
Hegelplatz 1
10117 Berlin
Germany

+49 (0)30 3087748- 0
info@ibu-epd.com
www.ibu-epd.com



Programme holder

Institut Bauen und Umwelt e.V.
Hegelplatz 1
10117 Berlin
Germany

+49 (0)30 3087748- 0
info@ibu-epd.com
www.ibu-epd.com



Author of the Life Cycle Assessment

Swisspearl Group AG
Eternitstrasse 3
8867 Niederurnen
Switzerland

+41 56 617 11 11
info@group.swisspearl.com
www.swisspearl.com



Owner of the Declaration

Swisspearl Group AG
Eternitstrasse 3
8867 Niederurnen
Switzerland

+41 56 617 11 11
info@group.swisspearl.com
www.swisspearl.com