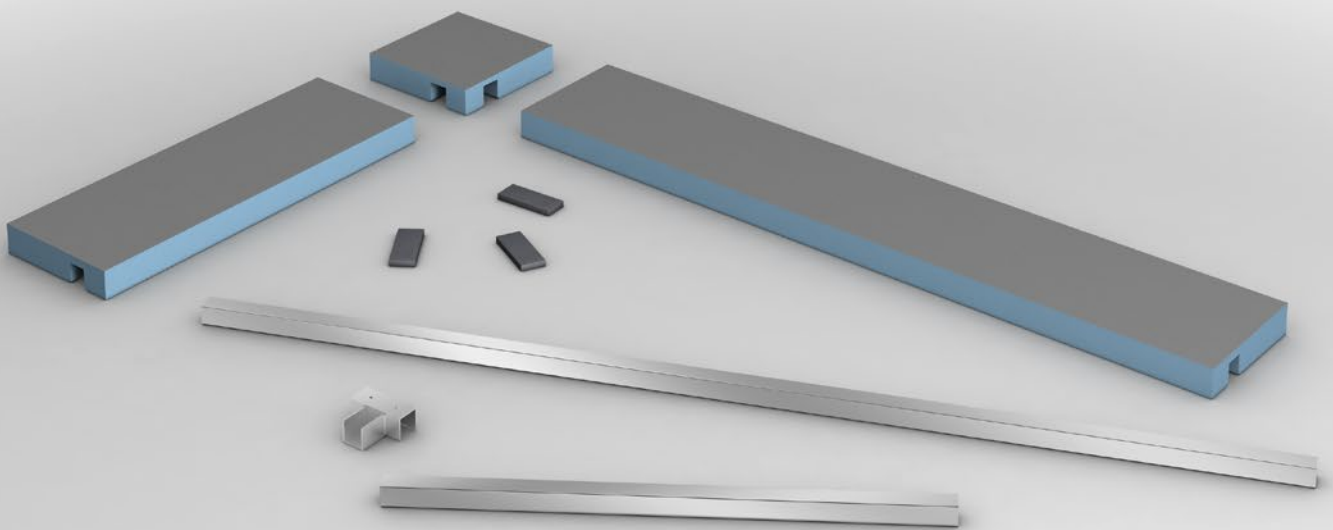
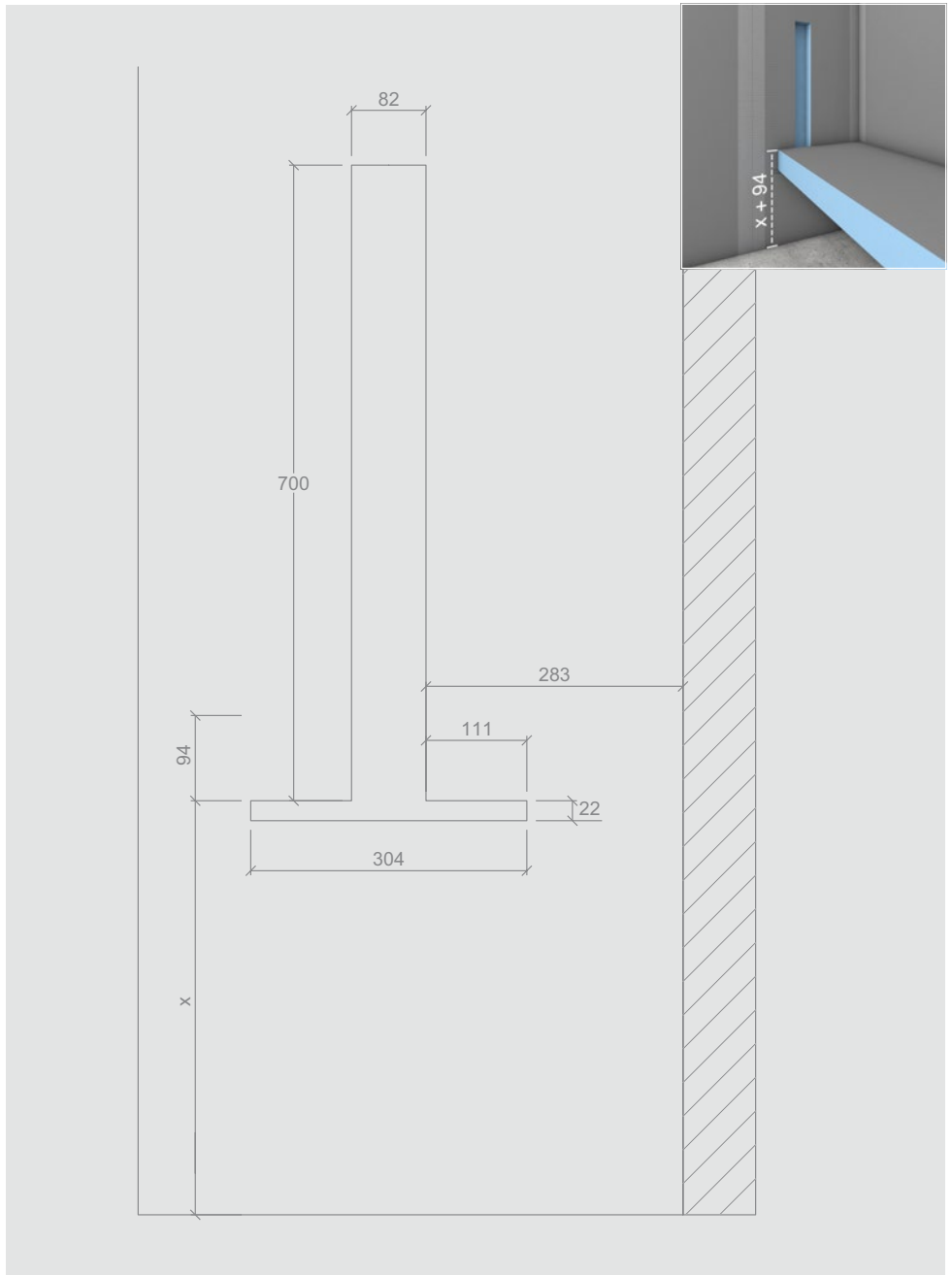
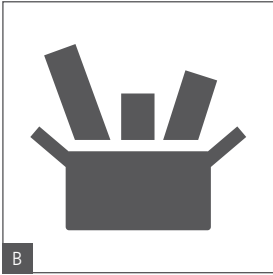
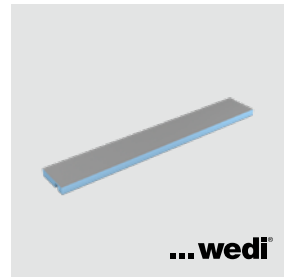
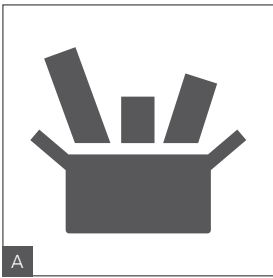


wedi Sanoasa[®] freitragende Sitzbank

wedi Sanoasa floating bench | wedi Sanoasa banquette suspendue







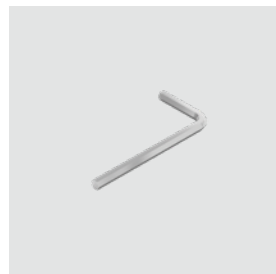
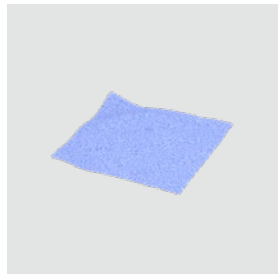
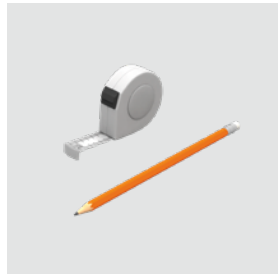
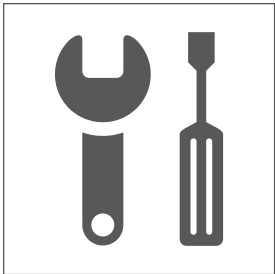
...wedi

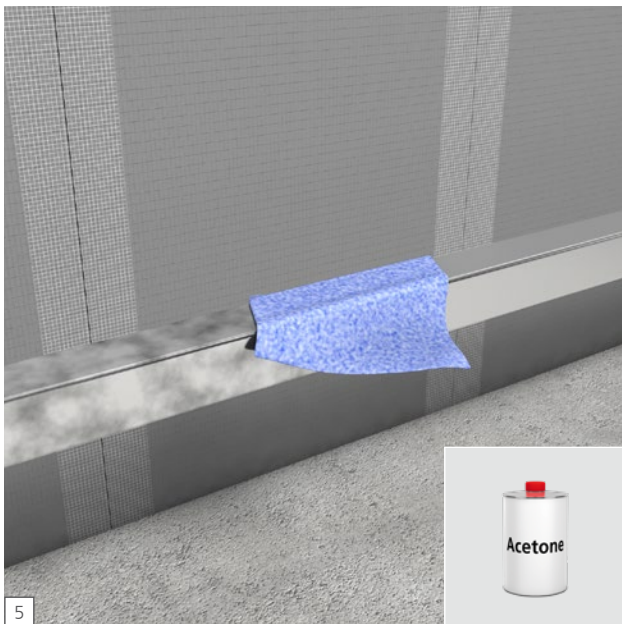
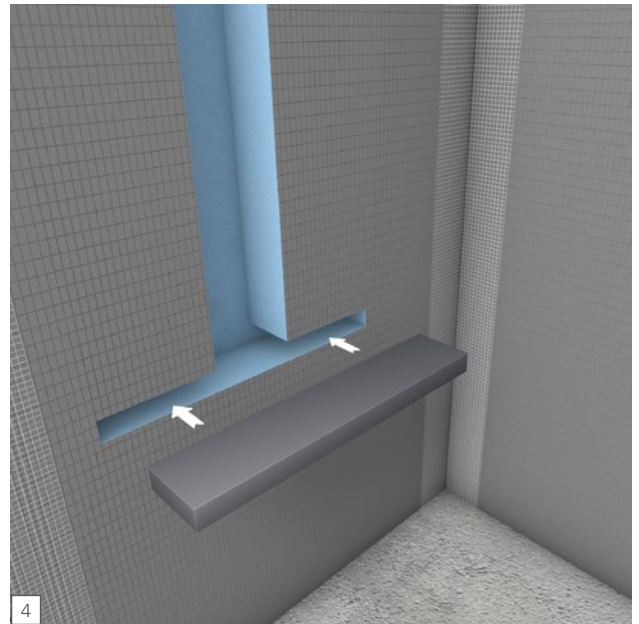
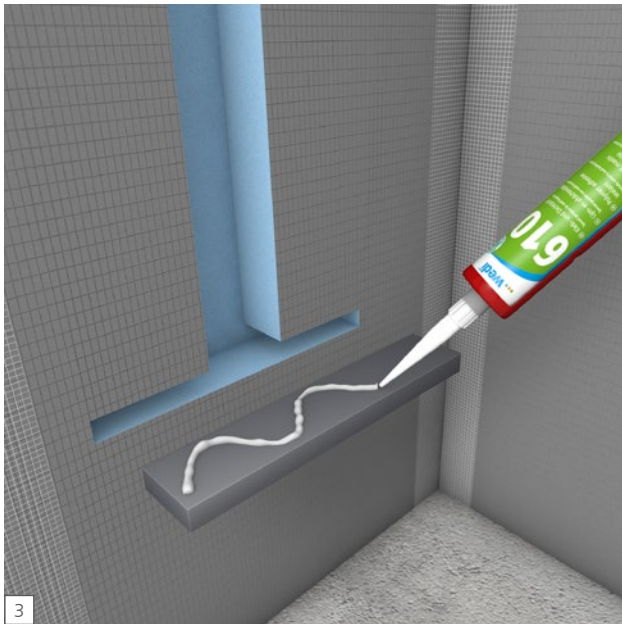
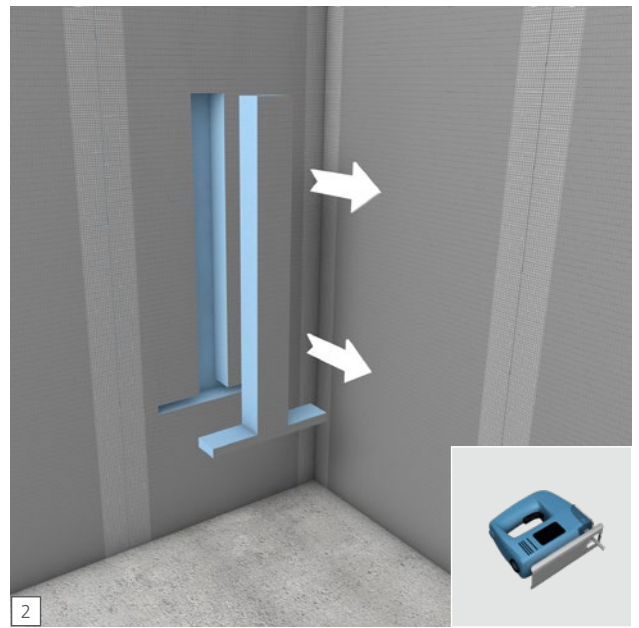
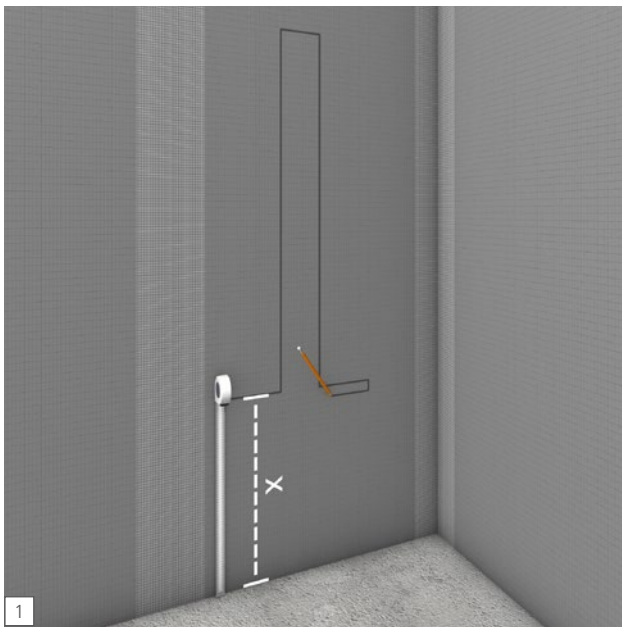


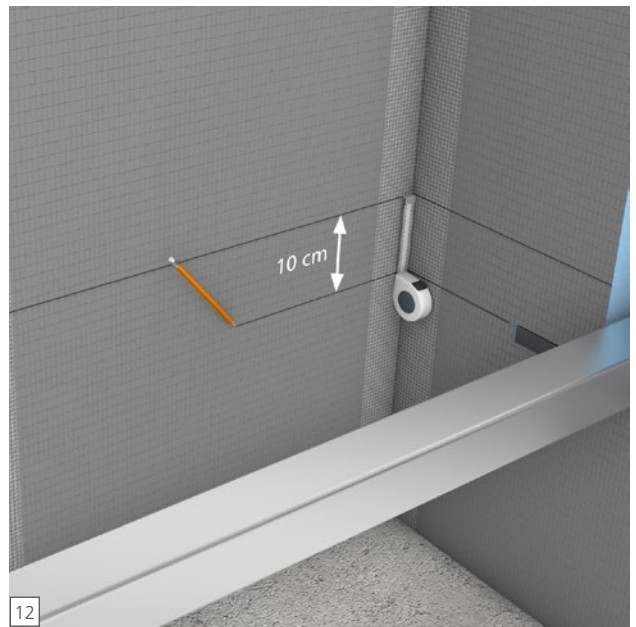
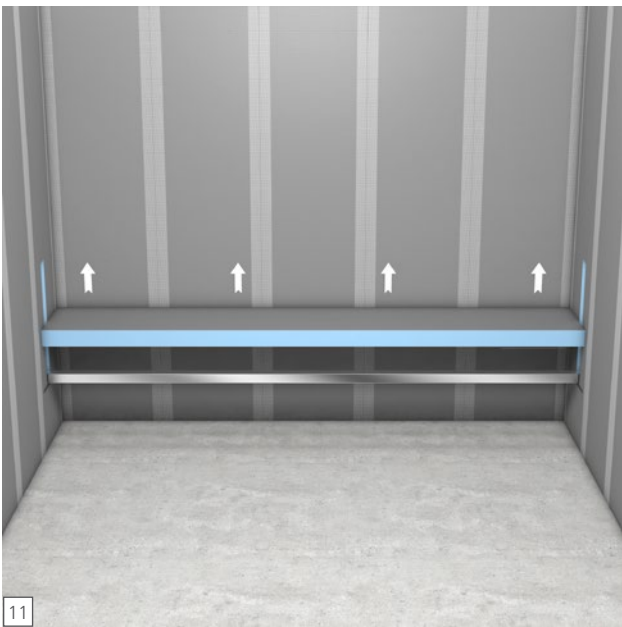
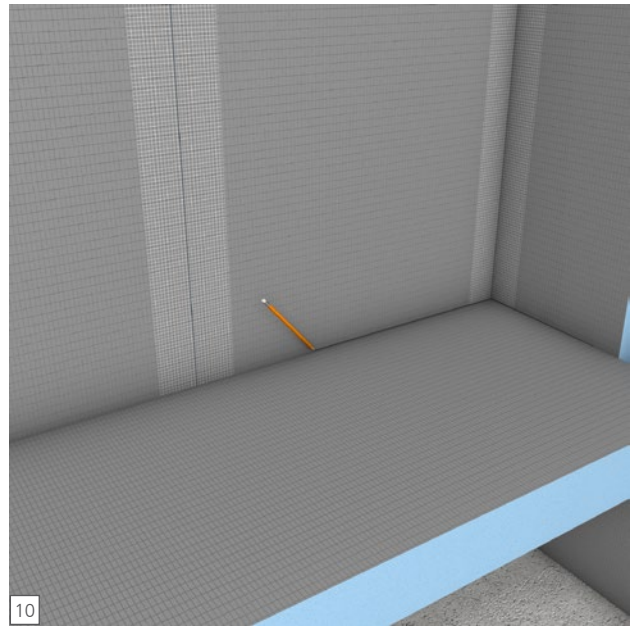
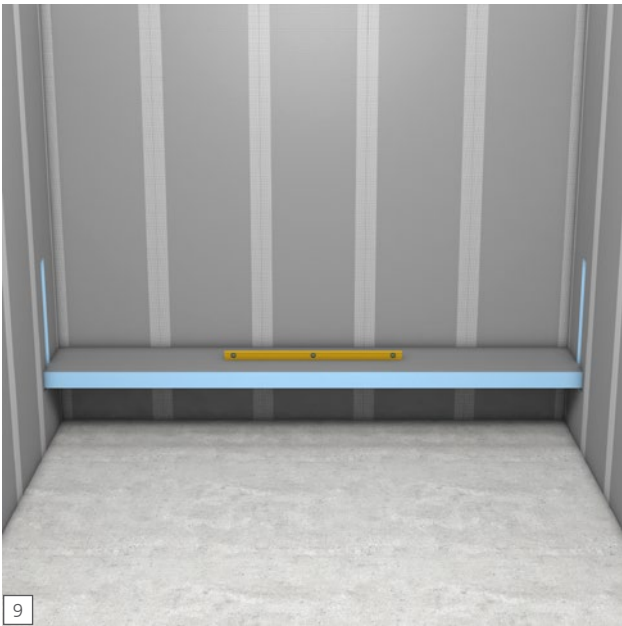
...wedi

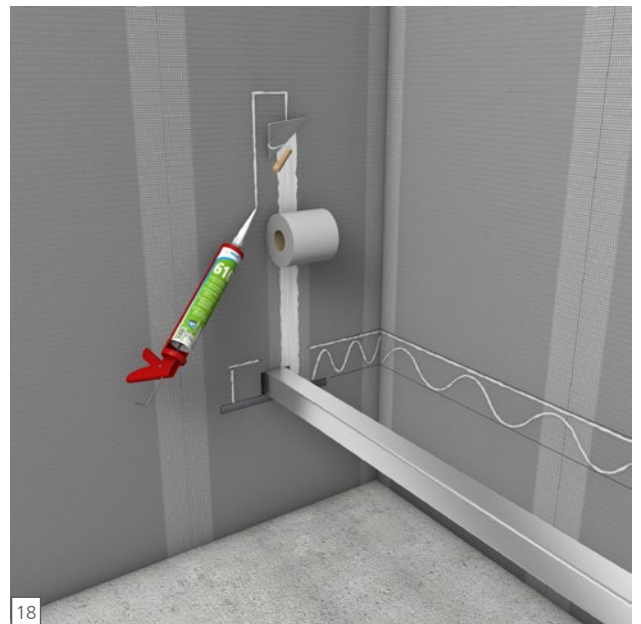
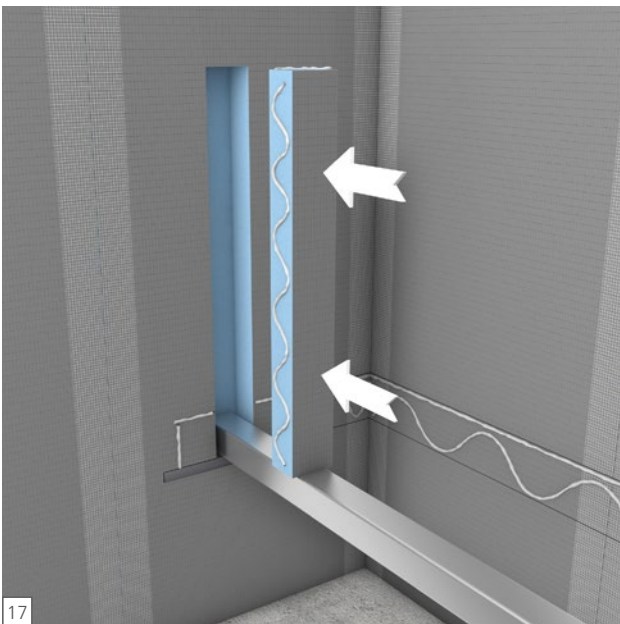
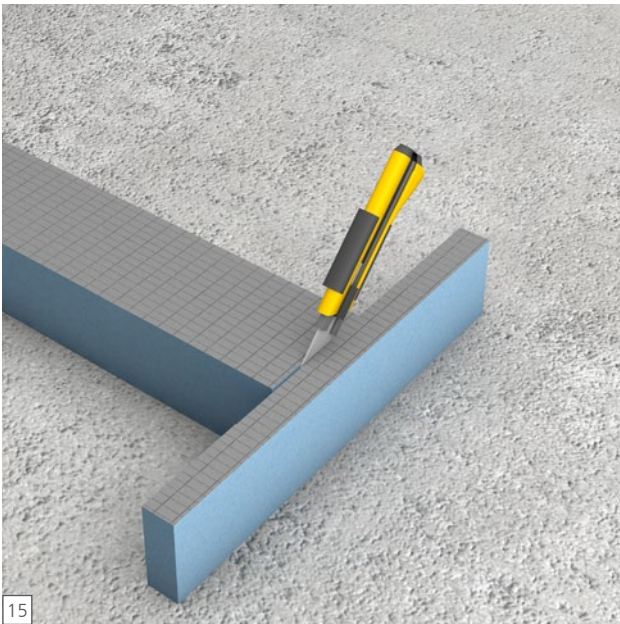
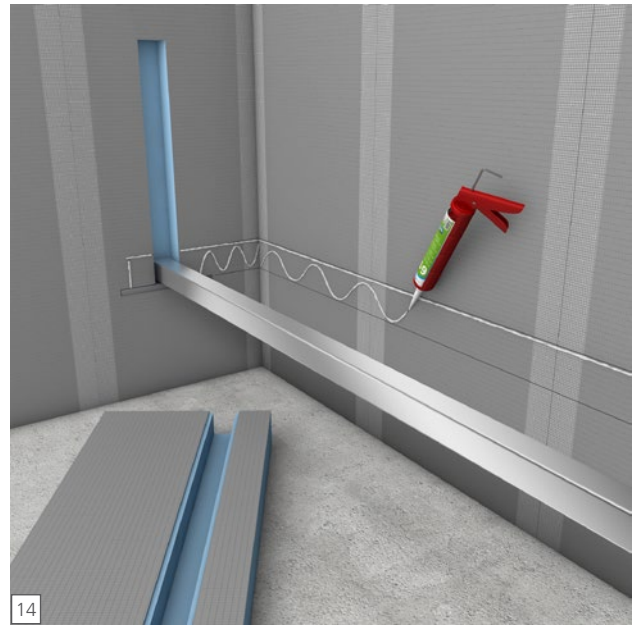
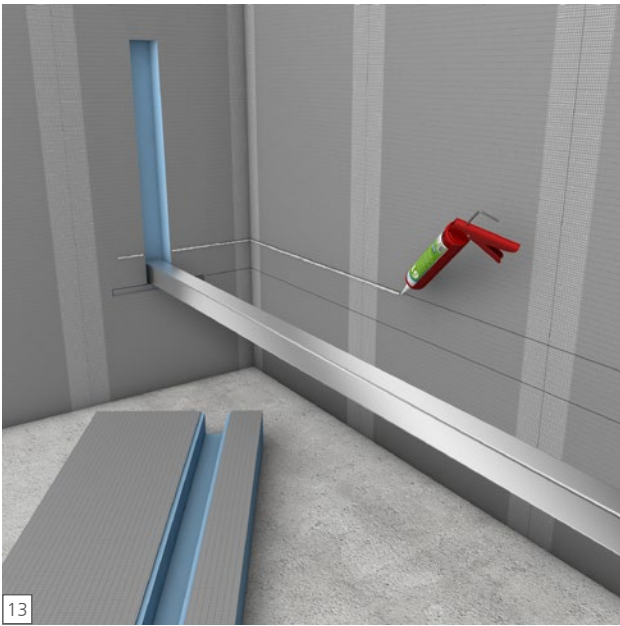


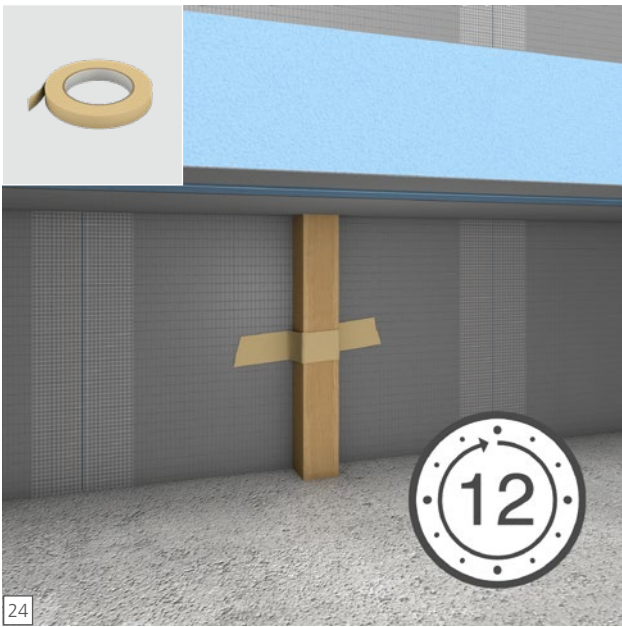
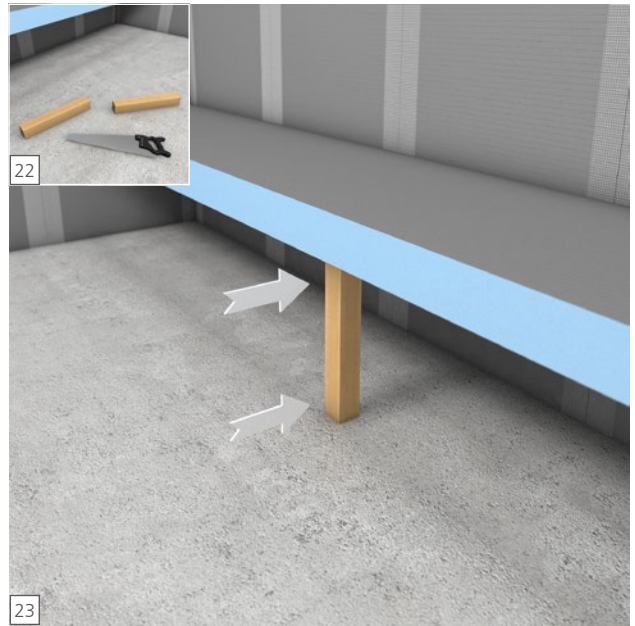
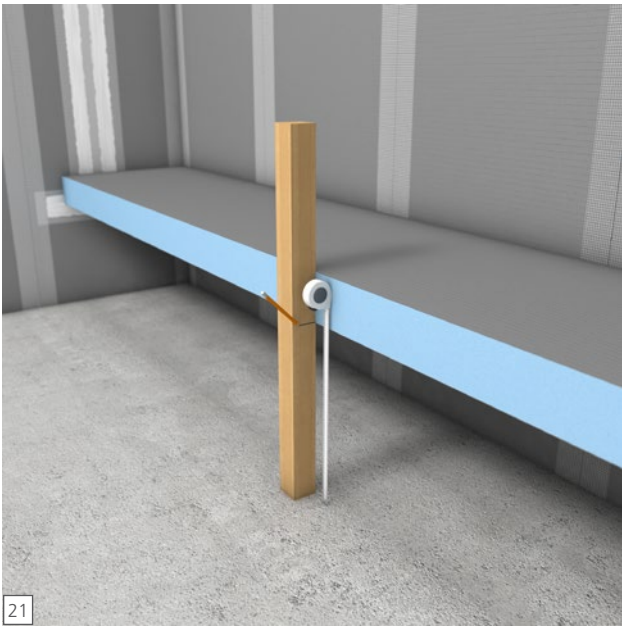
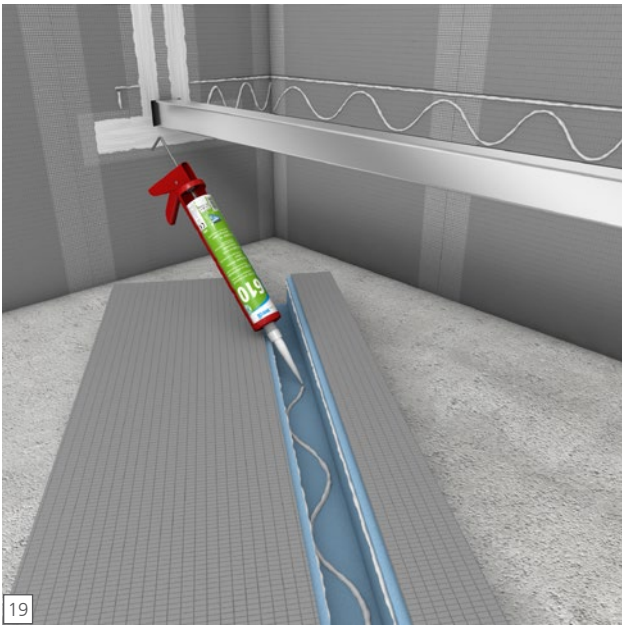
...wedi

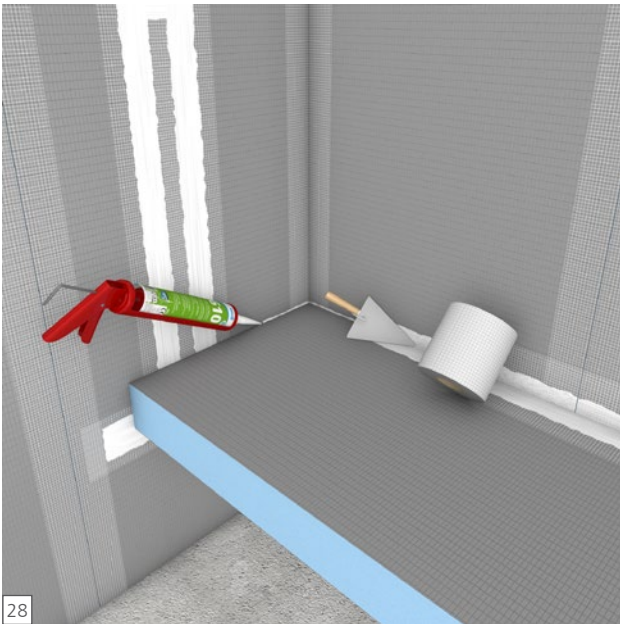
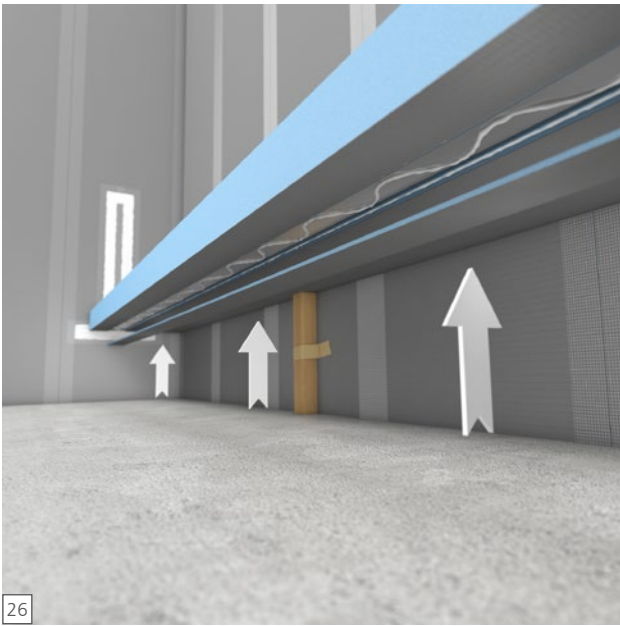


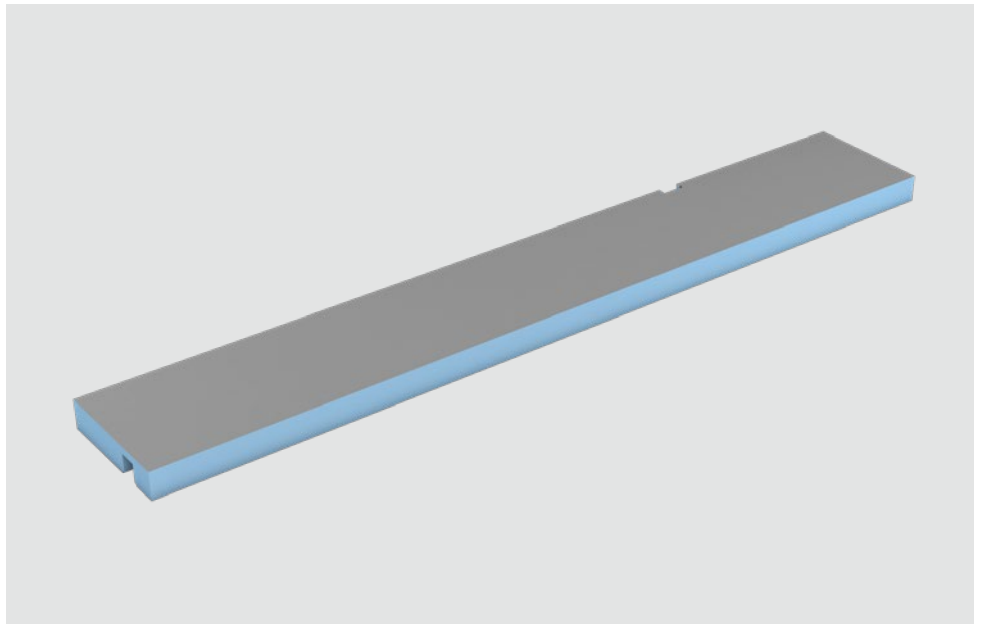




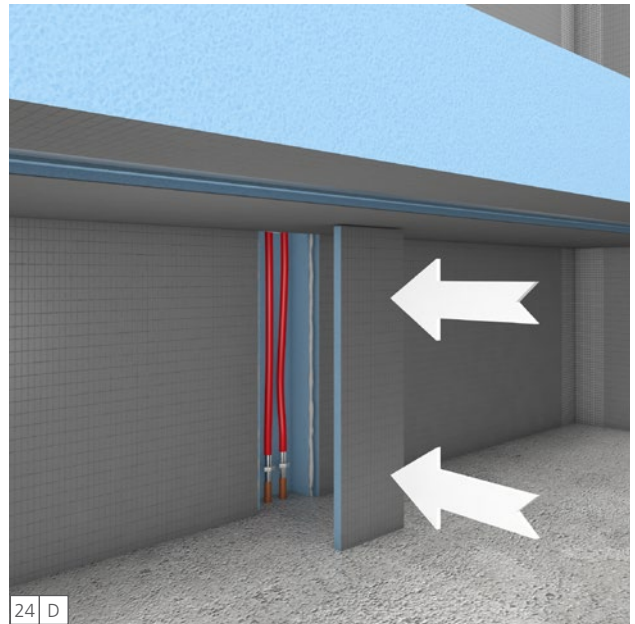
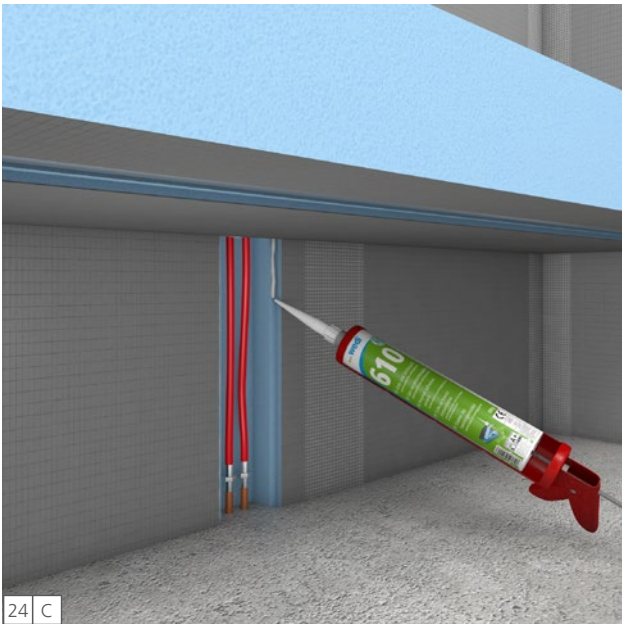
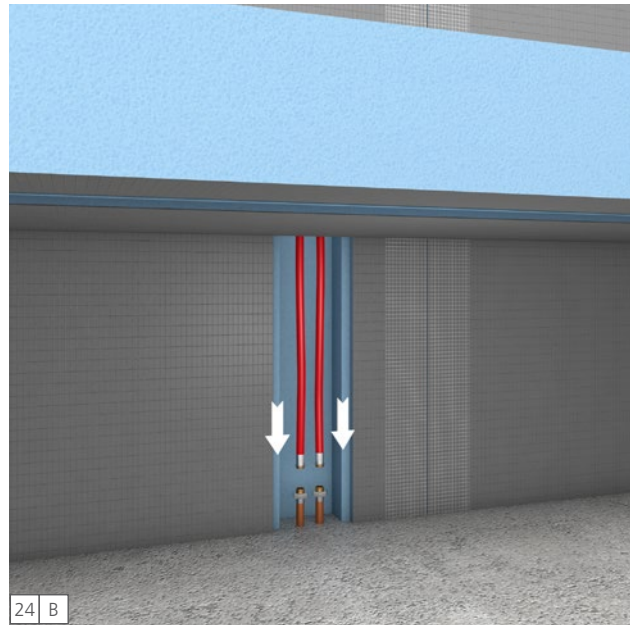
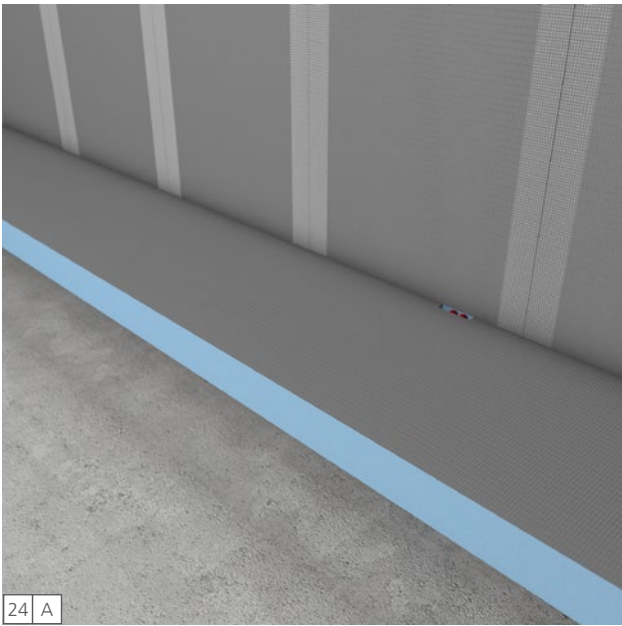


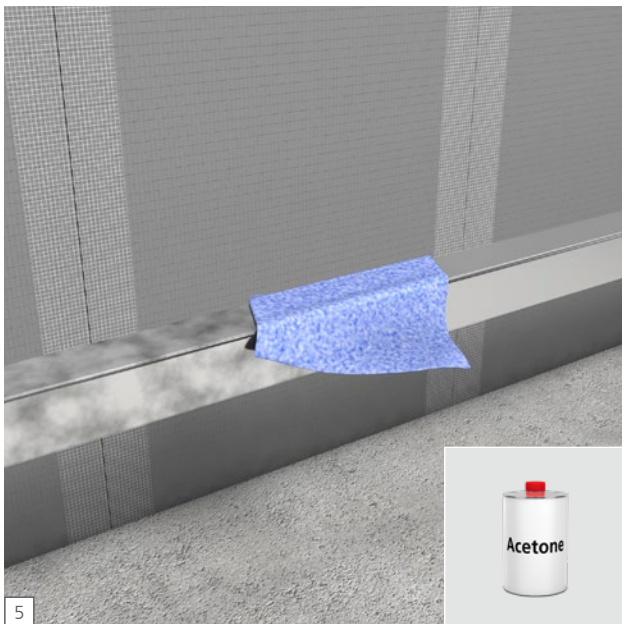
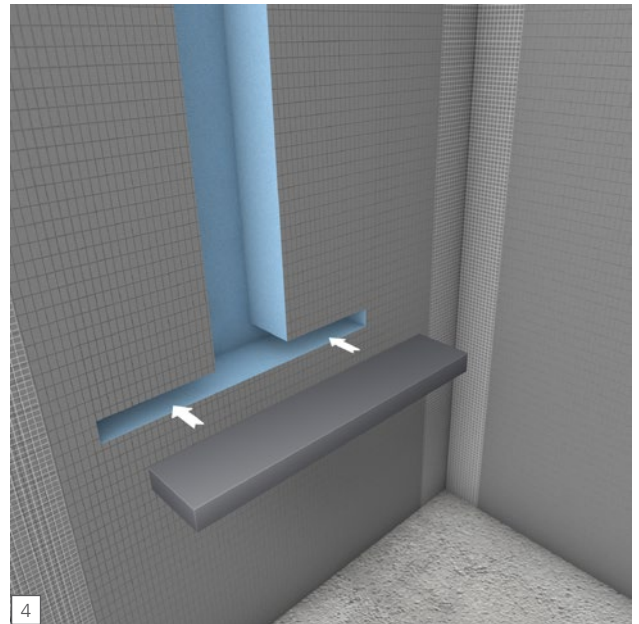
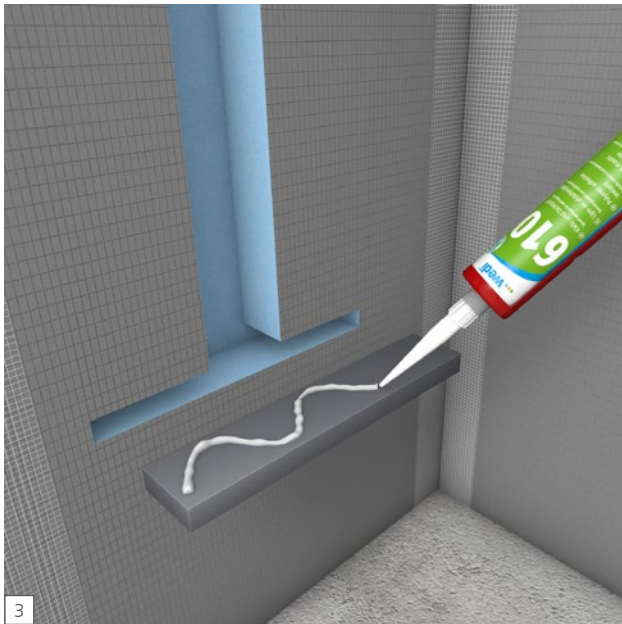
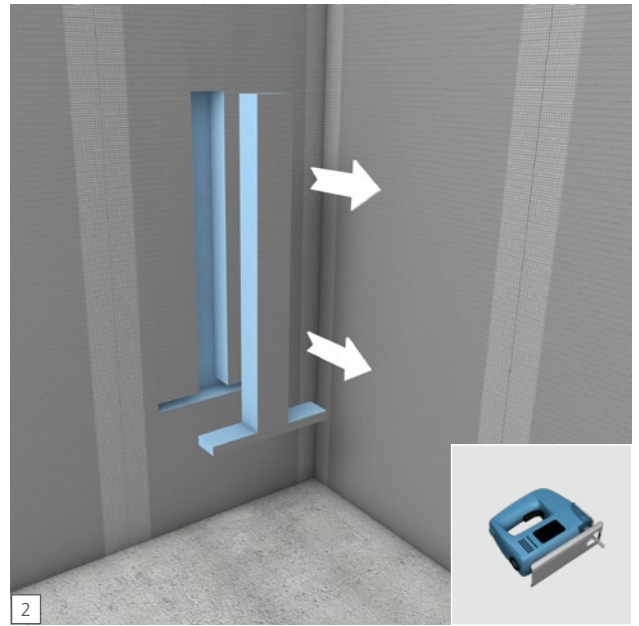
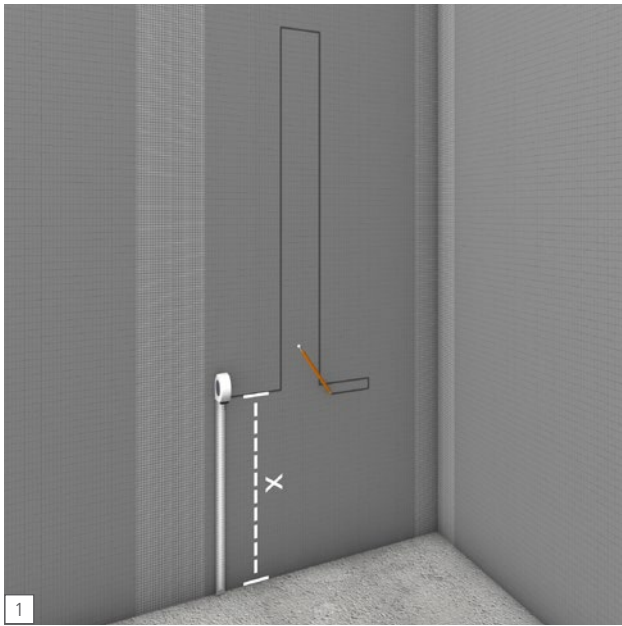


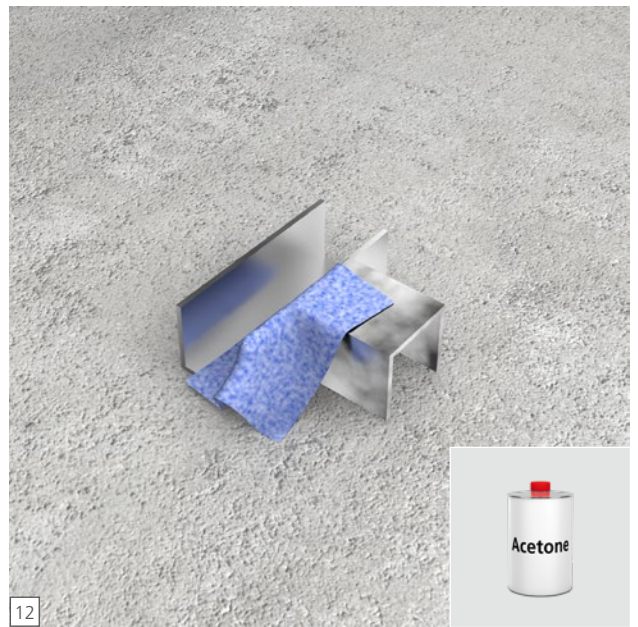
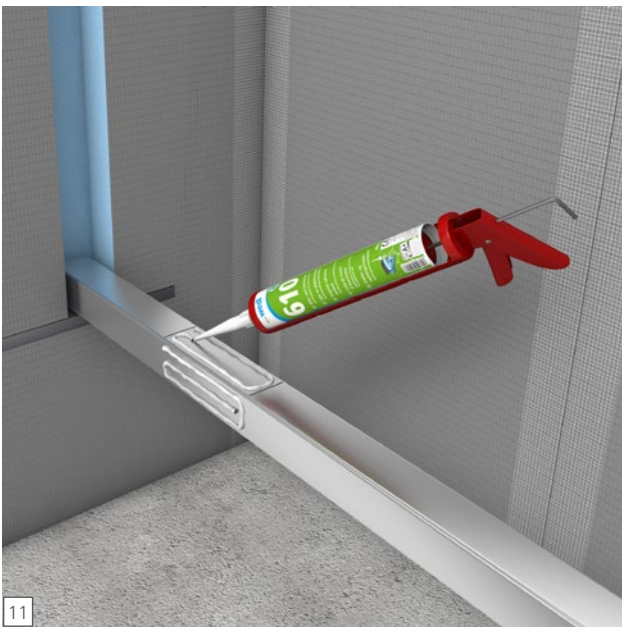
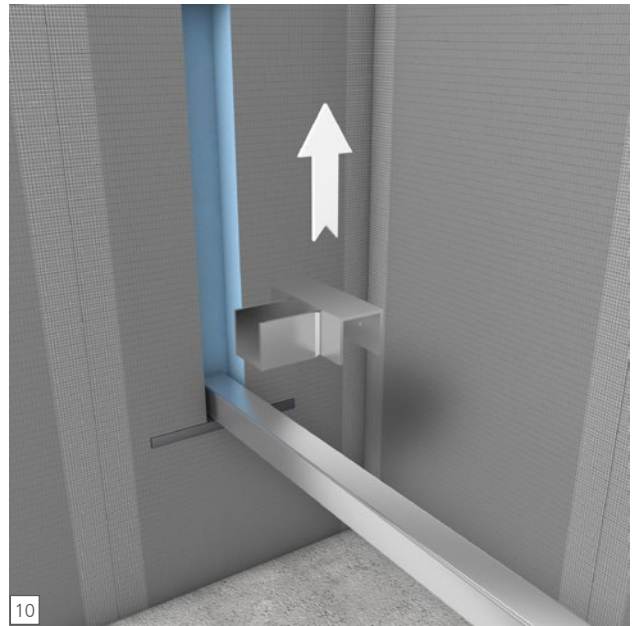
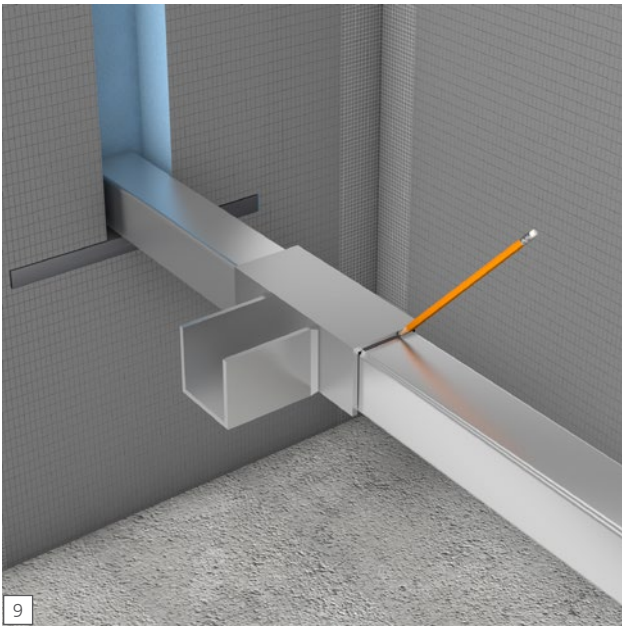
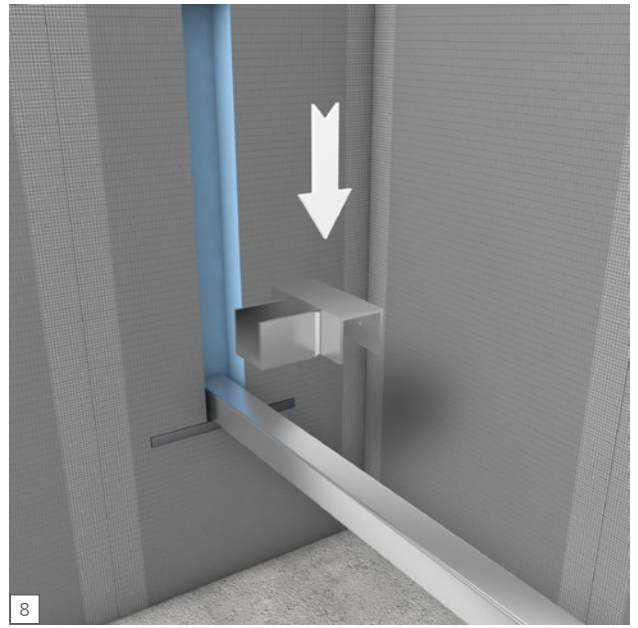


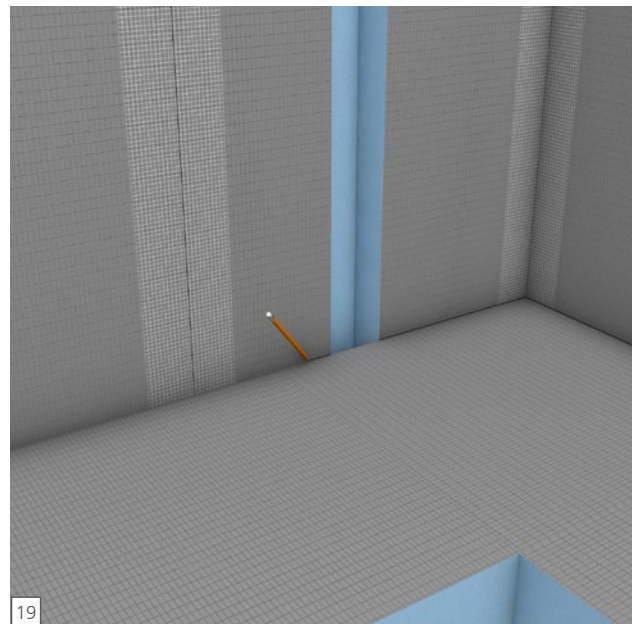
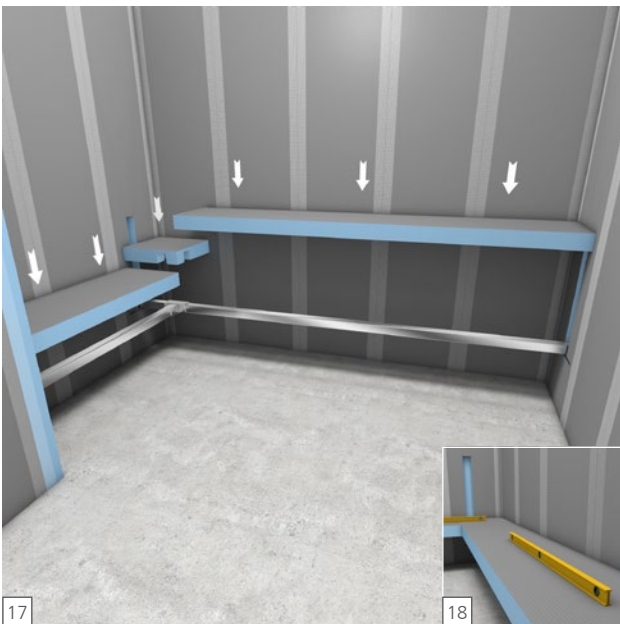
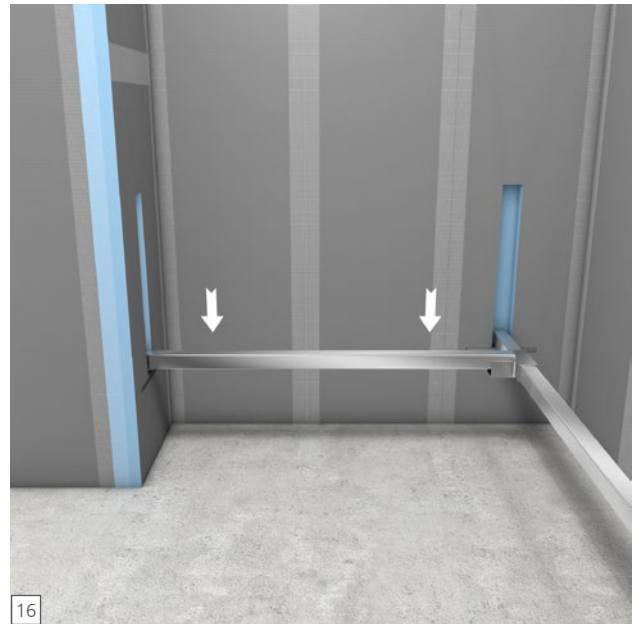
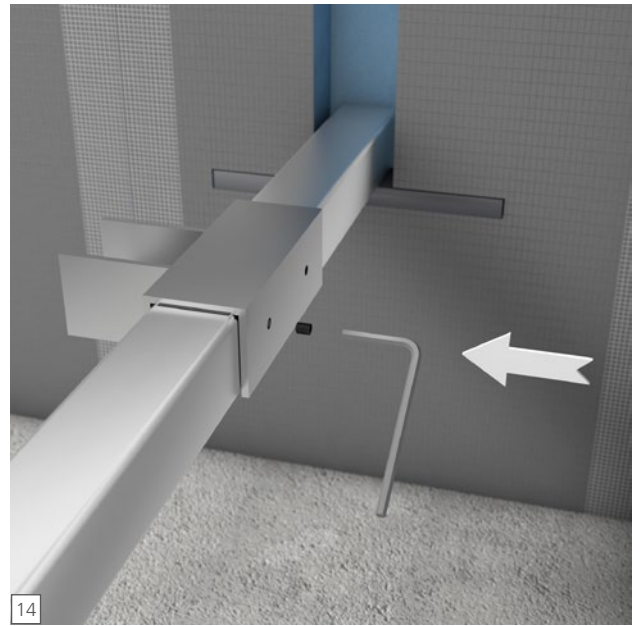
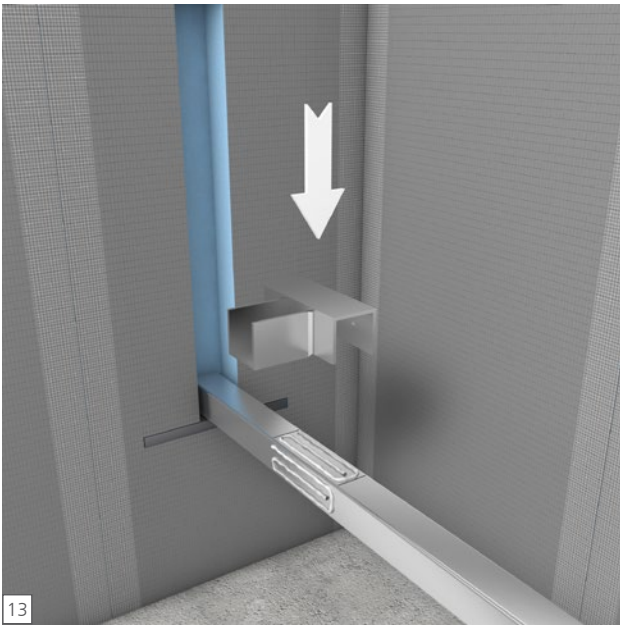


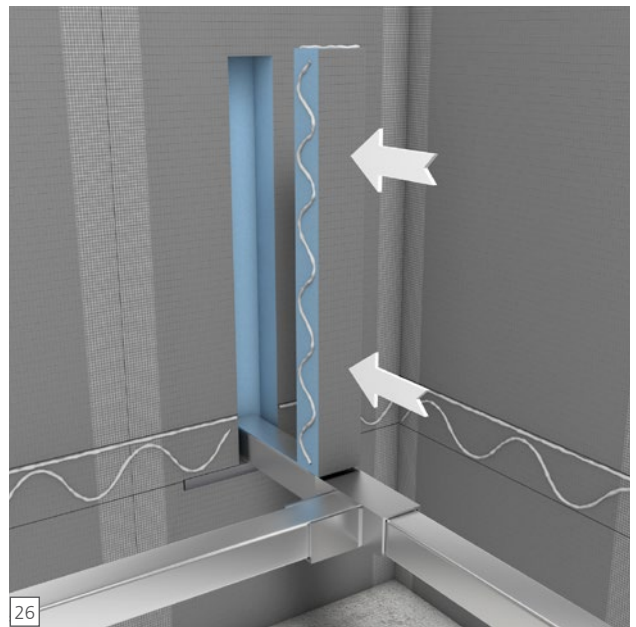
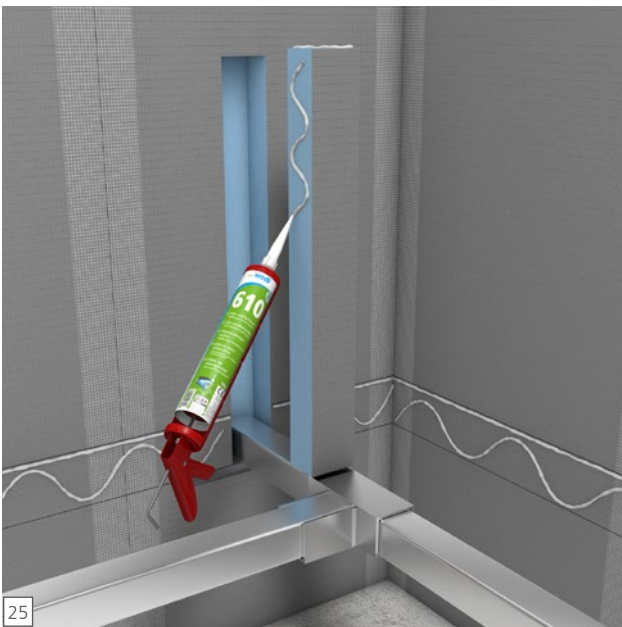
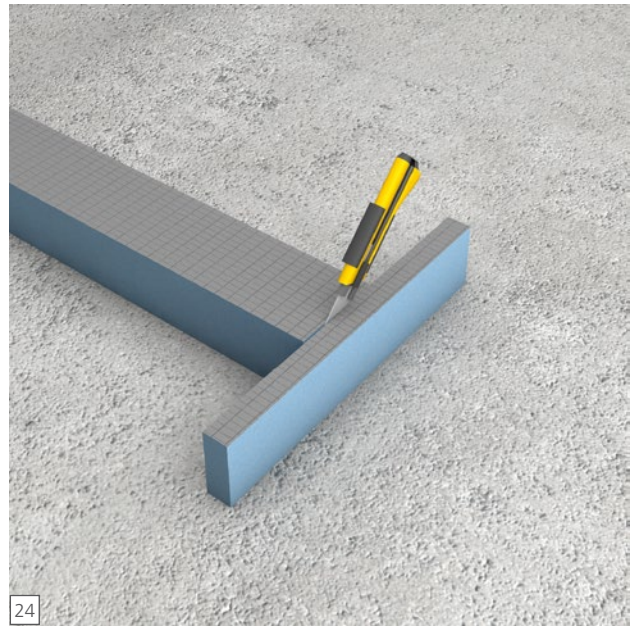
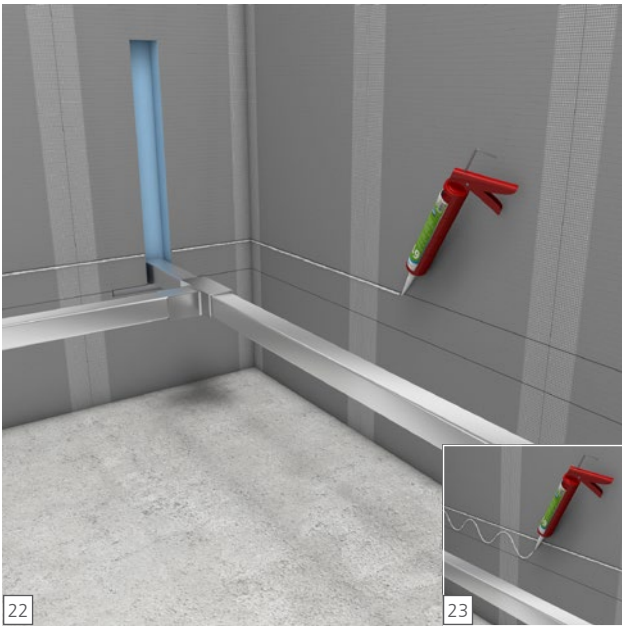
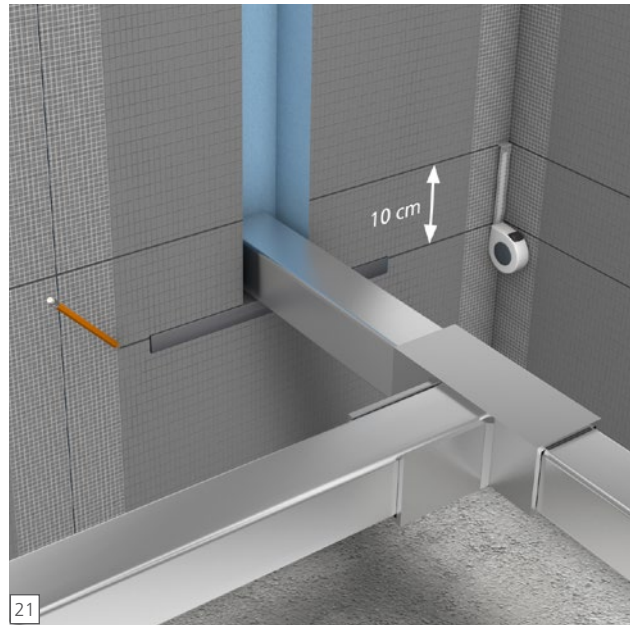
- DE** Achtung! Entscheiden Sie sich für eine freitragende Sitzbank inklusive Heizelementen, sind nach Schritt 24 zusätzlich die folgenden 4 Montageschritte erforderlich.
- EN** Attention! If you opt for a free-standing bench including heating element, then the following 4 installation steps are also required after step 24.
- FR** Attention ! Optez pour une banquette indépendante avec des éléments chauffants, après l'étape 24, les 4 autres étapes de montage suivantes sont nécessaires.

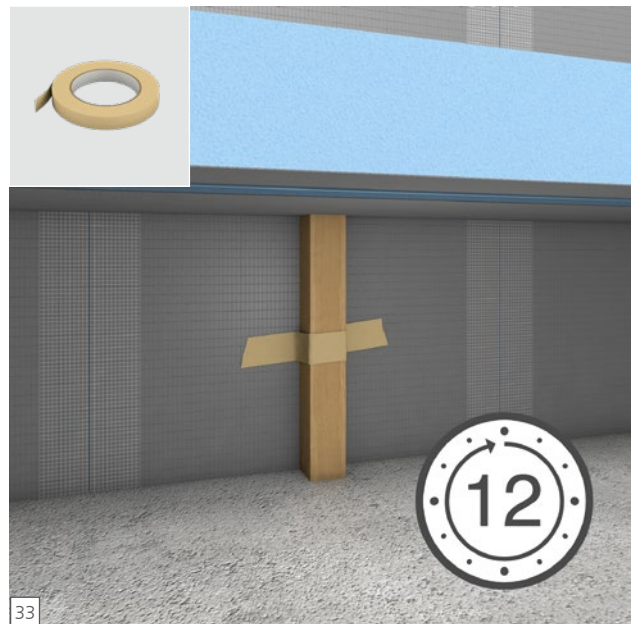
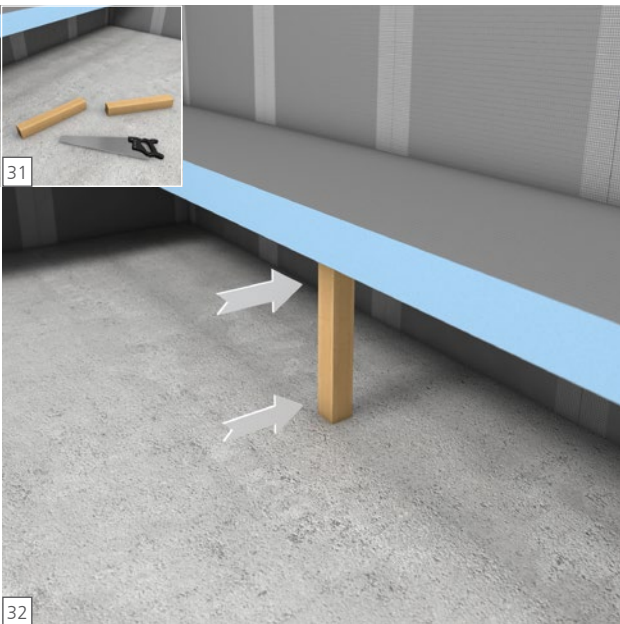
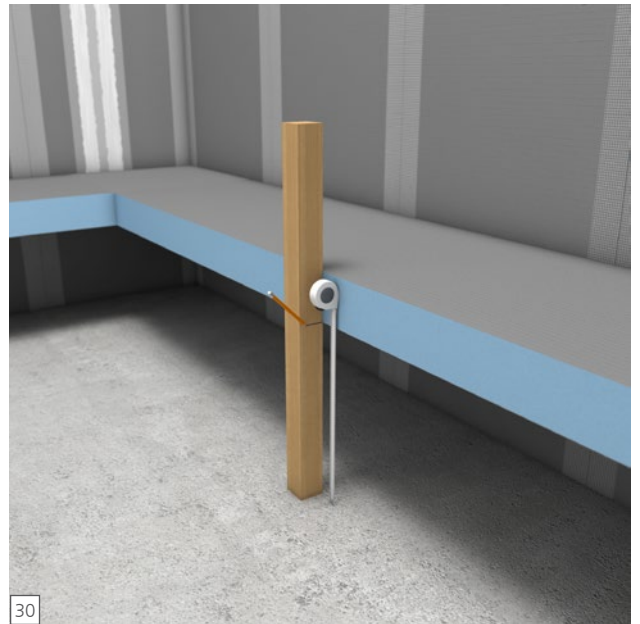
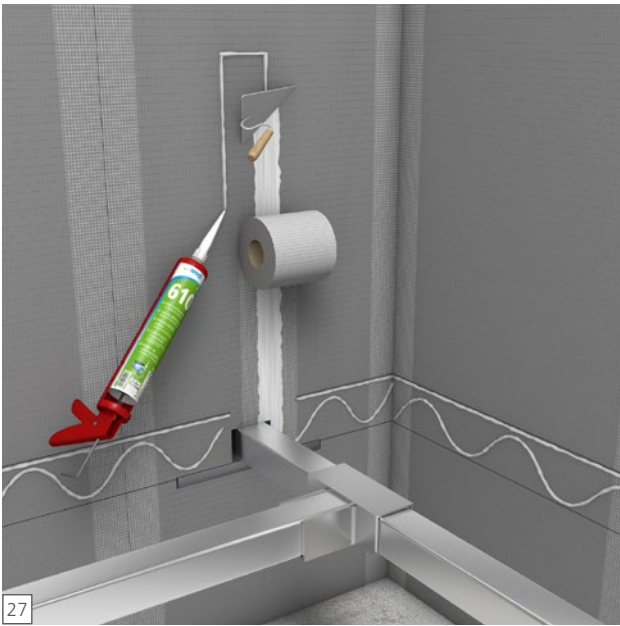


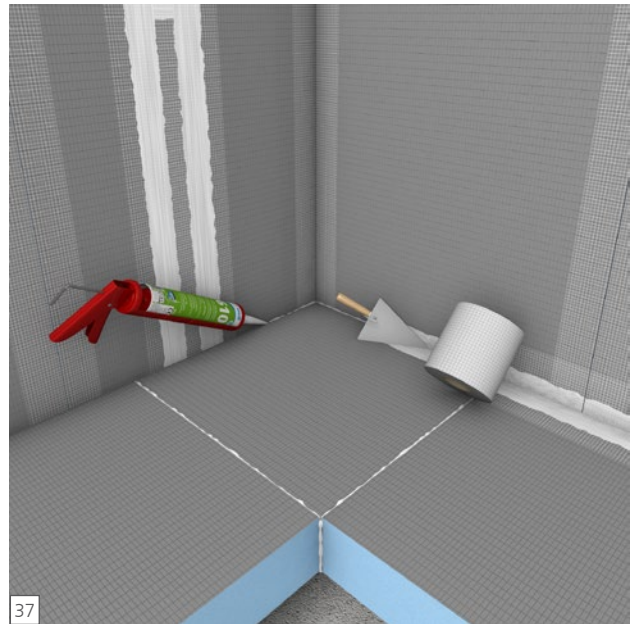
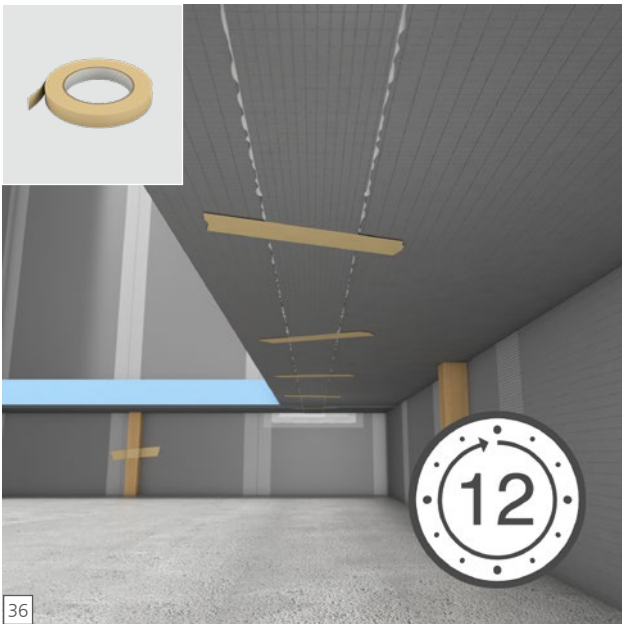
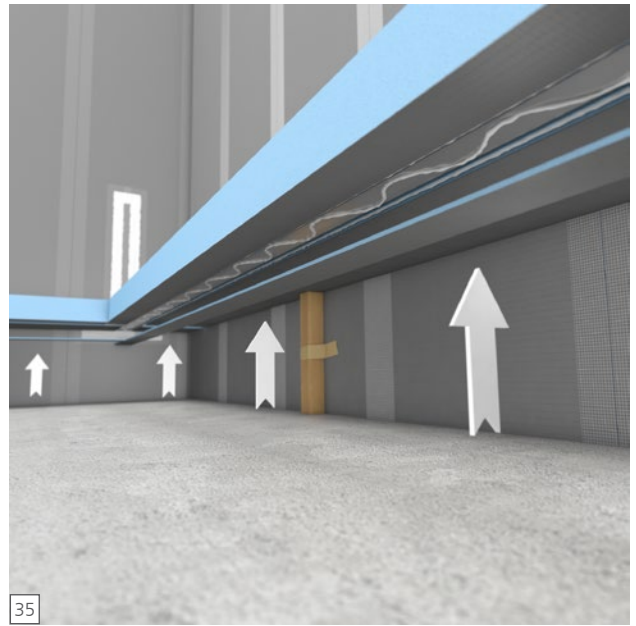


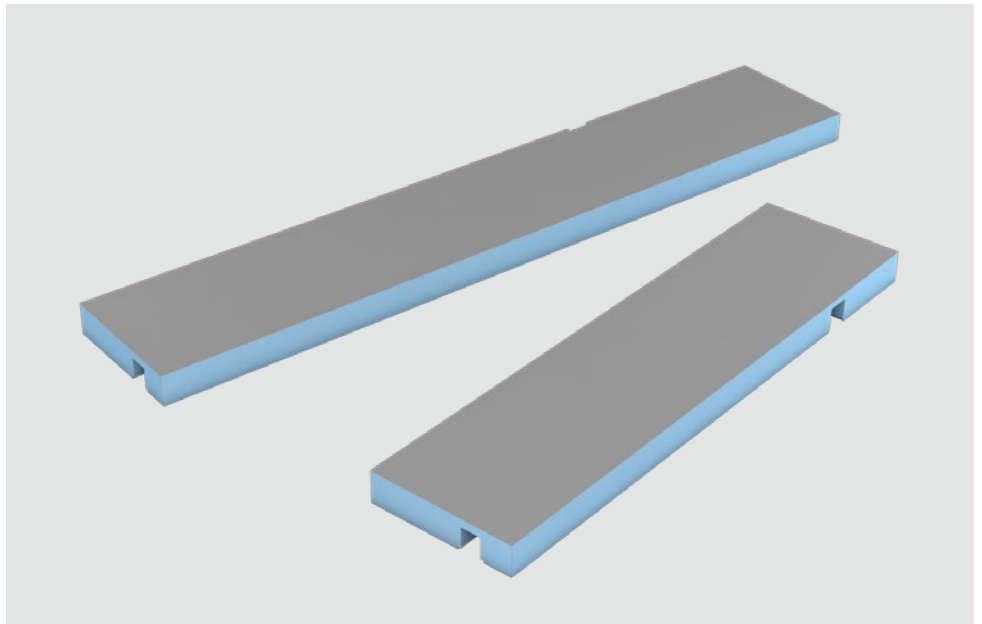








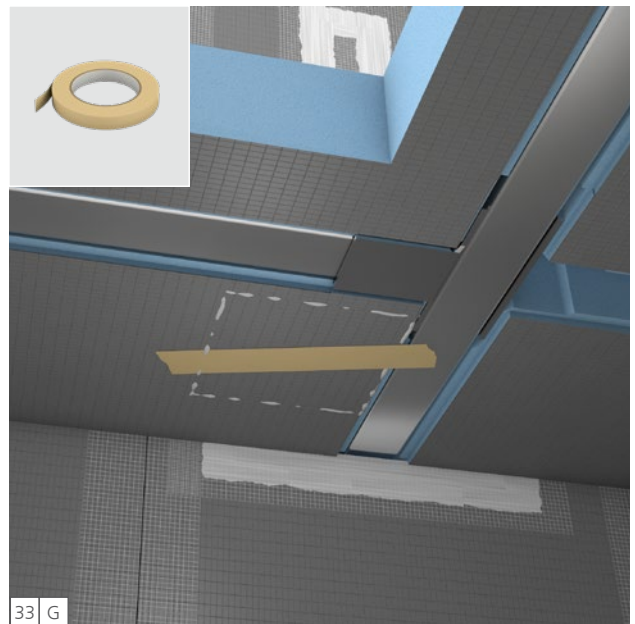
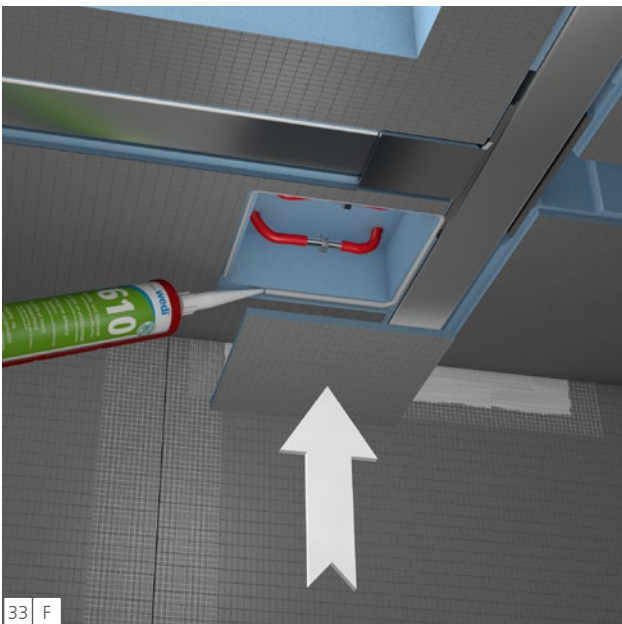
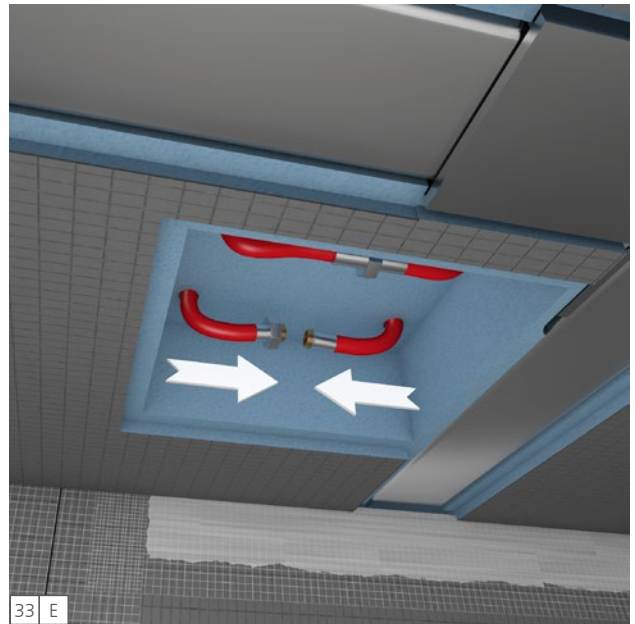
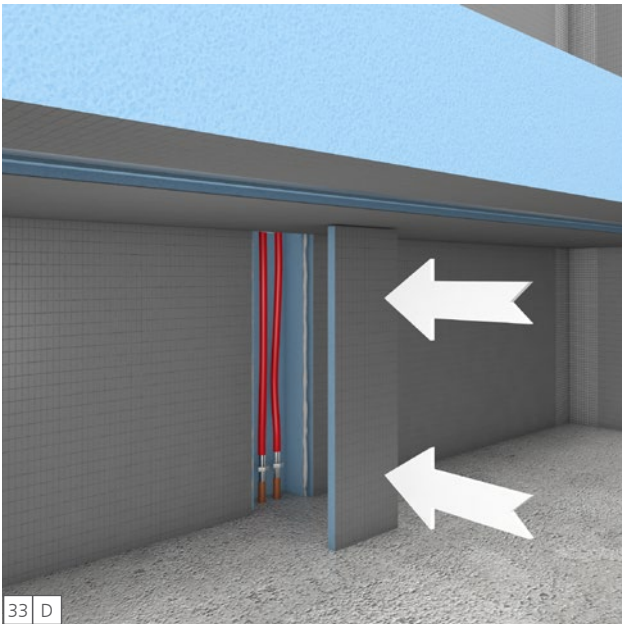
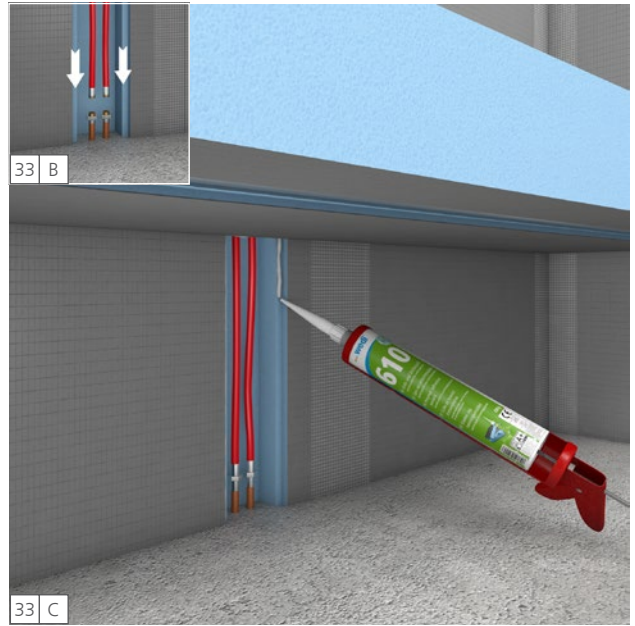
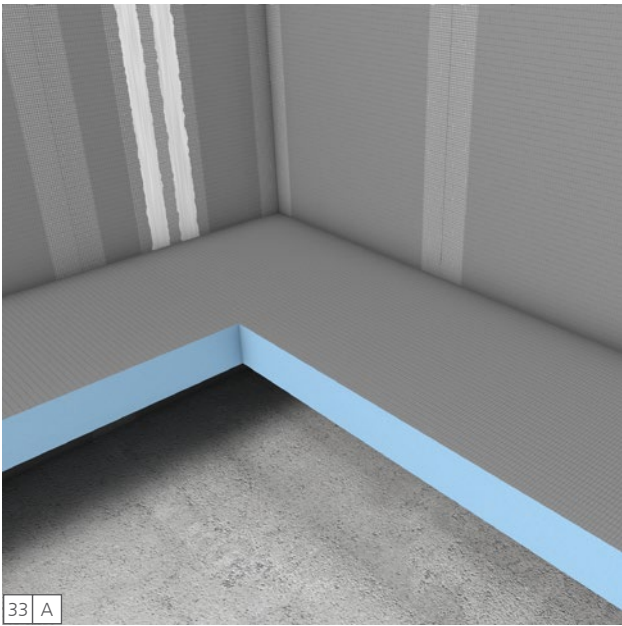




DE Achtung! Entscheiden Sie sich für eine freitragende Sitzbank mit Eckausführung inklusive Heizelementen, sind nach Schritt 33 zusätzlich die folgenden 6 Montageschritte erforderlich.

EN Attention! If you opt for a free-standing bench for corner installation, then the following 6 installation steps are also required after step 33.

FR Attention ! Optez pour une banquette indépendante avec réalisation angulaire et des éléments chauffants, après l'étape 33, les 6 autres étapes de montage suivantes sont nécessaires.





wedi GmbH

Hollefeldstraße 51
48282 Emsdetten
Deutschland

Telefon +49 25 72 156-0
Telefax +49 25 72 156-133

info@wedi.de
www.wedi.net